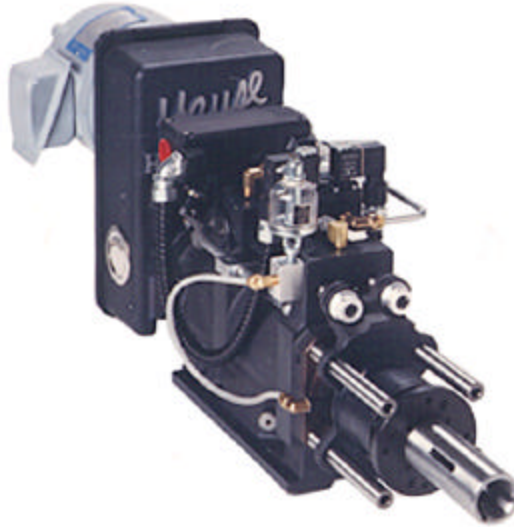




"PRE-PACKAGED" SYSTEMS
To fit many standard applications!

"Available options too numerous to list!"



MODEL 3496 Lead Screw Unit
(AIR RAPID TRAVEL FEATURE)

- Fully adjustable 4" stroke (2" rapid-2" lead screw)
- 1-3/8" AA spindle
- In line shaft drive
- .97 HP 1090 RPM 230/460 3ph reversing brake motor
- 5 step pulleys (520-840-1090-1360-2180 RPMs)
- Extended belt housing (with belt)
- Control Switches
- Double solenoid cycle control valve

NOTE: Units with hydraulic rapid travel and high torque lead screw units are also available. Consult Hause for details.

*Call for current pricing and options!

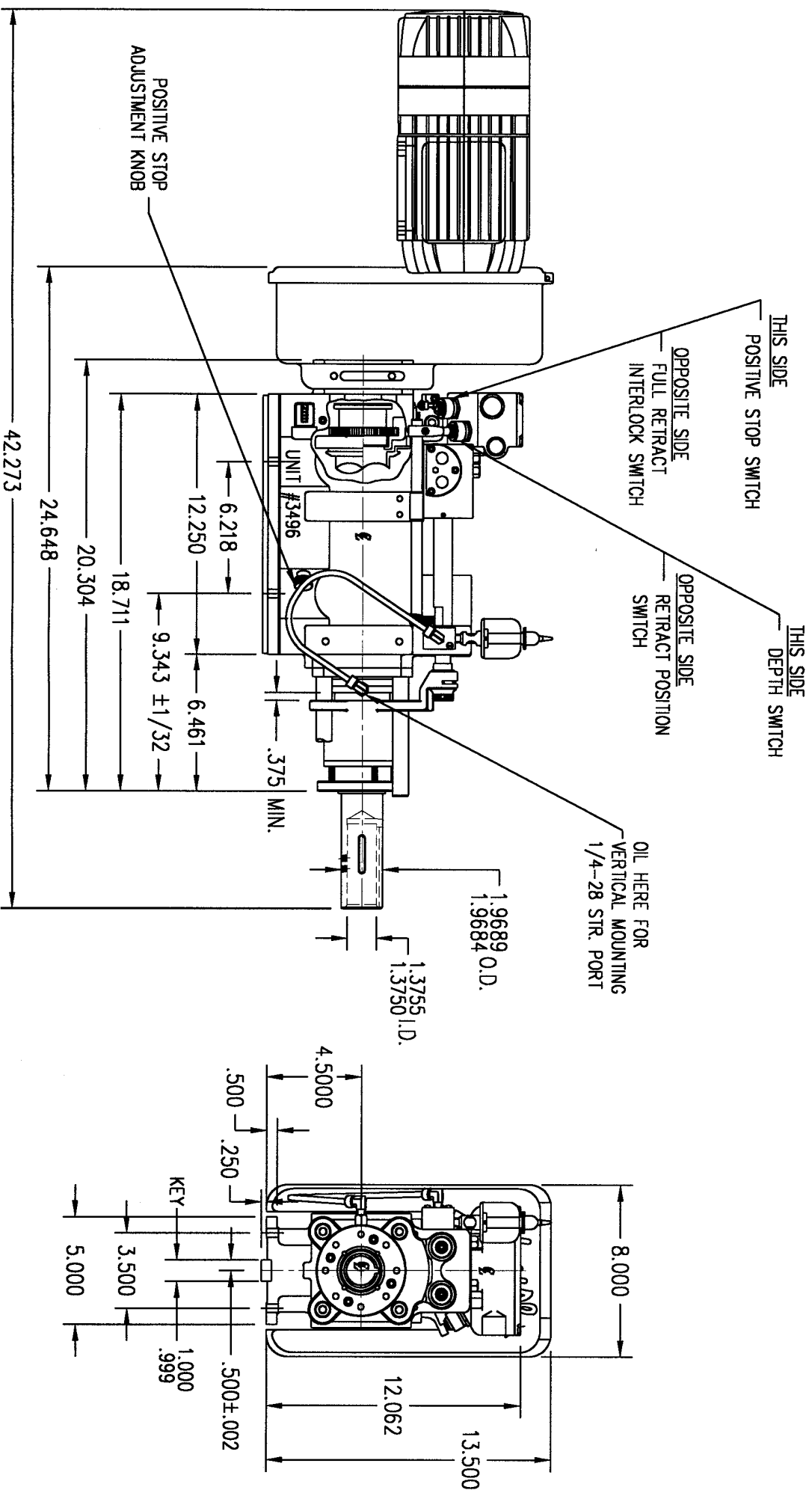
HOLOMATIC UNIT FEATURES

- Standard and Metric thread pitches
- Adjustable stroke length
- Adjustable rapid travel
- Positive stop on centerline
- Concentric "on centerline" thrust forces!

ABOVE PACKAGES AT "FAR LESS" THAN LIST PRICE!

Hause Machines, Inc.
809 S. Pleasant St.
Montpelier, OH 43543

Phone 419-485-3158
Toll Free 800-932-8665
Fax 419-485-3146
E-mail hause@bright.net
Web Page www.hausemachinesinc.com



FEATURES

- Concentric construction
- Adjustable rapid travel rates
- Easily changed leadscrews and nuts
- "No hole" reversal possible
- Keyed base for alignment

SPECIFICATIONS

- Maximum 2" leadscrew feed w/4" total stroke
- Tap or thread 8 to 56 TPI in mild steel (metric also)
- Positive leadscrew action through cycle
- Depth repeatable to 1/8 revolution @ 1000 RPM
- Unlimited mounting positions