

Components for Machine Building

Power Feed Units



Standard and Custom Components to Fit Your Needs Exactly

If you're building equipment to drill, tap, chamfer or thread, Hause Machines can help you create a machine that will fulfill your most demanding requirements.

Our vastly expanded product line includes a broad array of components, and the selection is constantly growing.

Building on a long tradition of excellence, Hause also renewed our commitment to quality, value and service. With product warranties ranging from one year to five years, standard Hause components are available for a wide range of manufacturing functions.

Off-the-shelf type components:

- Drilling Units
- Tapping Units
- Indexers
- Multiple Spindle Heads
- Drill Presses and Tap Presses

Custom Components

Although one of our standard components may fulfill your requirements, our experienced engineering group is ready to develop a custom component that will fit your production needs exactly.

We'll draw from a wide-range of proven solutions and new technologies to solve your problems and increase your productivity.

- Ballscrew Units
- Drilling Units
- Tapping Units
- Multi Spindle Heads
- Drill Presses and Tap Presses
- Columns
- Risers
- Bases

Visit Hause Machines on the Web

To see our full line of engineered solutions – and to learn more about how Hause can help you solve manufacturing problems – please visit our home on the World Wide Web. The Web site is an exciting development at Hause. We are using it for rapid communication with customers, troubleshooting, electronic commerce and more. Come see what Hause can do for you at www.hausemachines.com.

Table of Contents

How To Read This Catalog	3
How To Specify And Code Hause Units	4
Pneumatic Drilling Units (Metric)	5-8
Air Hydraulic Drilling Units (English)	9-11
Hydraulic Drilling Units (English).....	12-15
Hydraulic Drilling Units (Metric)	16-21
Lead Screw Tapping Units (English).....	22-27
Tapping Units (Metric)	28-32
Drill-Tapping Units (Metric)	33-34
Notes	35
Custom Add-Ons For English Units	36-49
-Spindles	36-37
-Drives	38-39
-Belts/Pulleys	40-41
-Motors	42-44
-Belt Housings.....	45
-Specials (Feed Control Valves).....	46
-Specials (Support Assemblies).....	47-49
Spindle Options For Metric Units	50-54
Worksheet/Order Form	55
Worksheet For Metric Units.....	56
Worksheet For English Units.....	57
Technical Information	58-59



Hause Machines, Inc. is pleased to provide you this catalog of their power feed unit line.

The catalog is sectioned in two ways:

- **Black** Titled Pages – fully customizable units with English dimensions
- **Red** Titled Pages – standard “off the shelf” type units with Metric dimensions

Second, the units are sectioned by feed type:

- Pneumatic
- Air Hydraulic
- Hydraulic
- Lead Screw

You will find that the larger you go in horsepower and thrust requirements, the deeper into the catalog you will go.

Additional pages cover the “Add-Ons” for the English units like the spindles, drives, belts/pulleys, motors, belt housings, and “Specials” pages for adaptations like bearing supports, slide supports and dual feed manifolds, as examples.

Pages are supplied for the spindle choices on the Metric units as well, with referenced models which apply to each spindle listed.

The last several pages give detailed technical specifications to figure drilling thrust, torque and horsepower, along with general guidelines for speeds and feeds.

In order to specify the appropriate unit for the application, it is best to determine your needs in the following manner.

(If assistance is required, please contact Hause Machines and a sales person will assist you in specifying the correct unit for your needs.)

After completion of this short exercise, you will be able to use the catalog and customize your unit on the “order form”.

Following is an example:

Model	Spindle	Drive	Belt/Pulley	Motor	Belt Housing	Special
2427	BE	A	A	N	C2	

Worksheets are supplied for your use. We suggest using them with an application or two, which will be a quick reminder next time you need to order a unit.


If you have any questions, we invite you to contact Hause Machines Sales Department. A staff member will be happy to assist you in selecting the unit best suited to your application.

Order Flow Chart

1. Application
 - Drill diameter or tap size and pitch
 - Material to be machined
 - Tooling to be used
 - Stroke required
2. Determine Parameters
 - Thrust and/or torque, tool feeds and speeds
 - Horsepower required
 - RPM requirements
3. Choose Model
 - Consider all factors and parameters required
 - Choose model which covers all (Could be more than one)
4. Choose Spindle (Pages 36-37)
 - Most commonly used by customer or use type frequently
 - Fits application best
 - Size appropriate for the tool
 - Consider torque required
5. Choose Drive (Pages 38-39)
 - Consider RPM's required
 - Consider torque required
 - If direct drive is desired, see #6.
6. Choose Pulley System or Direct Drive (Pages 40-41)
 - Consider RPM's required
 - Horsepower to be transmitted
 - Additional RPM requirements/ step pulleys vs. timing pulleys
7. Choose Motor (Pages 42-44)
 - Consider horsepower and RPM's needed
8. Choose Belt Housing, if applicable (Page 45)
 - Mounting – Vertical or horizontal application
 - Motor and pulley sizes
 - Orientation of housing

HOW TO SPECIFY AND CODE HAUSE UNITS

Hause Power Feed Units (English dimensions) can be completely and accurately described by a model number consisting of coded symbols. To develop a model number, select only those symbols that represent the options required and place them in the sequence indicated below.



	Description	Pg. #	Sym.		
Model Number (XXXX)	Type	Air Hydraulic	9 to 11	2	Model X X XX Spindle XX Drive X Belt/Pulley X Motor XX Belt Housing XX Special XX
		Hydraulic	12 to 15	6	
		Lead Screw (Air Rapid)	22 to 23	3	
		Lead Screw (Hyd. Rapid)	24 to 25	5	
		Lead Screw (No Rapid)	26 to 27	7	
	Stroke Length	Specify in Inches			
	Model #	As used by Hause internally. Pick the model that best fits your needs.			

Description	Pg. #	Sym.	Description	Pg. #	Sym.
Flange	36	AA	3/4" Adjustable Adapter	37	AY
Piloted Slot	36	AB	3/4" Adjustable Adapter - Extra Long	37	AZ
Piloted Slot - Lead Screw	36	AC	1" Adjustable Adapter	37	BA
Piloted Slot - High Torque	36	AD	1" Adjustable Adapter - Short	37	BB
Piloted Slot - High Torque (L.S.)	36	AE	1" Adjustable Adapter - Extra Long with 4"	37	BC
#25 ER Collet Socket	36	AF	1" Adjustable Adapter - Extra Long with 6"	37	BD
#32 ER Collet Socket	36	AG	1-1/16" Adjustable Adapter	37	BE
#33 Jacobs Taper	36	AH	1-1/16" Adjustable Adapter - Extra Long	37	BF
#33 Jacobs Taper Extended	36	AI	1-1/16" Adjustable Adapter - Quick Change	37	BG
#33 Jacobs Taper Extra Long	36	AJ	1-1/16" Adjustable Adapter - Quick Change (L.S.)	37	BH
#2 Morse Taper	36	AK	1-1/4" Adjustable Adapter	37	BI
#2 Morse Taper Extended	36	AL	1-3/8" Adjustable Adapter - Quick Change	37	BJ
#2 Morse Taper Quill Support	36	AM	1-3/8" Adjustable Adapter	37	BK
#2 Morse Taper High Speed	36	AN	1-3/8" Adjustable Adapter - Extra Long	37	BL
#2 Morse Taper Series "A"	36	AO	1-3/8" Adjustable Adapter - High Torque	37	BM
#2 Morse Taper Series "A" Ext.	36	AP	1-3/8" Adjustable Adapter - High Torque Extra Long	37	BN
#3 Morse Taper	36	AQ	1-1/2" Adjustable Adapter	37	BO
#3 Morse Taper High Torque	36	AR	1-1/2" Adjustable Adapter - Extra Long	37	BP
#3 Morse Taper High Torque Ext.	36	AS	1-1/2" Adjustable Adapter - High Torque	37	BQ
#4 Morse Taper	36	AT	1-7/8" Adjustable Adapter	37	BR
#4 Morse Taper Extended	36	AU	1-7/8" Adjustable Adapter - Extra Long	37	BS
#4 Morse Taper High Torque	36	AV	1-7/8" Adjustable Adapter - High Torque (L.S.)	37	BT
#4 Morse Taper Lead Screw	36	AW	Special	37	SP

Description	Pg. #	Sym.	Description	Pg. #	Sym.
Inline Shaft Drive	38	A	1-1/8" Direct Drive	39	N
High Torque	38	B	1-3/8" Direct Drive	39	O
Coolant Through	38	C	1-3/8" Direct Drive - High Torque	39	P
Draw Bar	38	D	14mm Direct Drive	39	Q
Draw Bar with Grease Port	38	E	19mm Direct Drive	39	R
Planetary Reduction 6:1	38	F	24mm Direct Drive	39	S
Planetary Reduction - High Torque	38	G	28mm Direct Drive	39	T
Coolant Through	38	H	2.9:1 Reduction Drive	39	U
Hi-Lo Reduction - Standard	38	I	4.2:1 Reduction Drive	39	V
Hi-Lo Reduction - High Torque	38	J	5.7:1 Reduction Drive	39	W
5/8" Direct Drive	39	K	2.9:1 Reduction Drive - High Torque	39	X
3/4" Direct Drive	39	L	4.2:1 Reduction Drive - High Torque	39	Y
7/8" Direct Drive	39	M	5.7:1 Reduction Drive - High Torque	39	Z

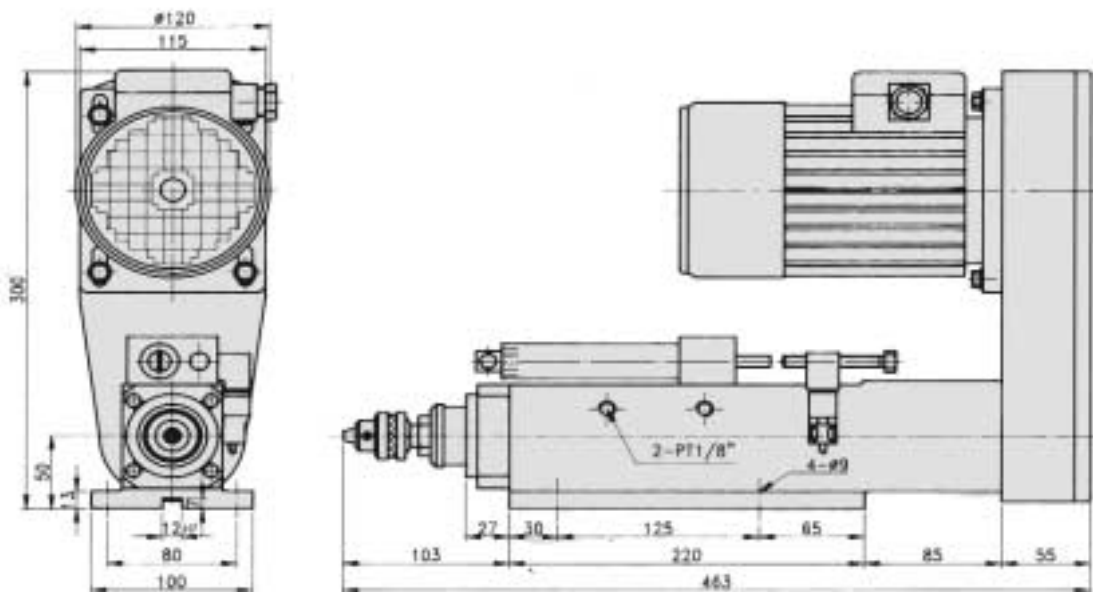
Description	Pg. #	Sym.
5 Step "3V" Section Pulleys	40 to 41	A
5 Step "B" Section Pulleys	40 to 41	B
4 Step "B" Section Pulleys	40 to 41	C
4 Step Pulley on Motor, 5 Step Pulley on Driven Shaft	40 to 41	D
4 Step Pulley on Motor Only (For use with "I" or "J" Hi-Lo Drive)	40 to 41	E
5 Step Pulley on Motor Only (For use with "I" or "J" Hi-Lo Drive)	40 to 41	F
"B" Section Belt and Pulley (Specify RPM)	40 to 41	G
Timing Belt and Pulley (Specify RPM)	40 to 41	H

Description	Pg. #	Sym.
Note: Motors are ball bearing, enclosed NEMA "C" Flange Mounted, 230/460 volt, 3 phase, 60 Hertz. Maximum motor size is limited to HP transmitted on Belts/Pulley chart if using step pulleys or by .009 HP/Rev for standard drives and spindles, .055 HI/Rev on HI drives and spindles or by the 8-1/2" flange Ø if using our belt housing.	42	A
	to	to
	44	QQ

Description	Pg. #	Sym.	
Type	Overhead	45	A
	Small Extended	45	B
	Extended	45	C
Orientation	Top	45	1
Length	Right	45	2
	Bottom	45	3
	Left	45	4

Description	Pg. #	Sym.
Feed Control Valve - Dual Feed Manifold	46	V1
Feed Control Valve - Skip Feed Cam Bar	46	V2
Spindle Support Assembly	47	SA1-SA2
Right Angle Milling Attachment	47	SA3-SA4
Heavy Duty Boring Adaption With Roller Bearings	47	SA5-SA6
Heavy Duty Boring Adaption With Tapered Bearings (TB)	48	SA7-SA8
4" Stroke High Speed Boring Spindle	48	SA9
Heavy Duty Milling Adaption with (TB) and Thru Coolant	48	SA10
Heavy Duty Right Angle Milling Head	49	SA11
Support Quill and THK Slide Assembly	49	SA12-SA13

PNEUMATIC DRILLING UNIT



Model FD3-55

Specifications (Unit: metric)

Pneumatic Pressure	55 ~ 85 P.S.I.
Drilling Capacity	3/16" (steel) 70 P.S.I.
Chuck Type	ER-16-3/8", JT1-1/4", JT2-3/8"
Power	0.5HP-2p or 4p, 200V/440V-60HZ
Max. Revolution/Minute	6,000RPM
Weight	45 lb
Overall Stroke	2.25"
Drilling Stroke	1" or 2"
Cylinder Diameter	2"
Cylinder Area	Forward 2.45 IN ² , Backward 1.1 IN ²
Thrust Force	174 lb @ 70 P.S.I.
Transmission Pulley	V-SHAPE, 189J, 201J

Consumption Parts

Spindle Bearing	6002Zx2, 6001ZZx1
Pulley Bearing	6203ZZx2
O-Ring for Front Cover	GLY-40x1, N-50x1, DKB-40-52-6
O-Ring for Piston	OSY-50x2
O-Ring for Rear Cover	P-22x1, P-22Ax1, SER22
O-Ring for Sleeve	d1-50x2

Features

- RPM and chuck type should be given when placing order.
- There are two feed strokes, 1" and 2", to choose from.
- Selection of pneumatic or electrical micro switch.
- Motor and pulley can be mounted around the circle in 45 degree interval.



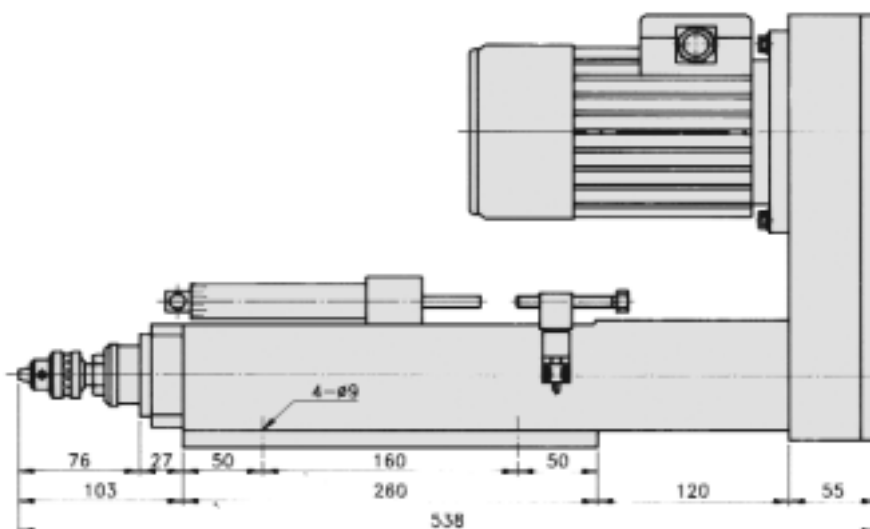
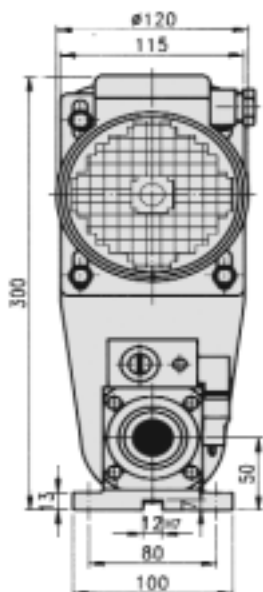
Spindle Options

(See page 50 for drawings and dimensions)

ER16 Pg. 50

JT1 Pg. 50

JT2 Pg. 50



Model FD3-80

Features

- RPM and chuck type should be given when placing order.
- There are two feed strokes, 1" and 2", to choose from.
- Capable of $\pm .0005$ with short dwell.
- Motor and pulley can be mounted around the circle in 45 degree interval.



Spindle Options

(See page 50 for drawings and dimensions)

ER16 Pg. 50

JT1 Pg. 50

JT2 Pg. 50

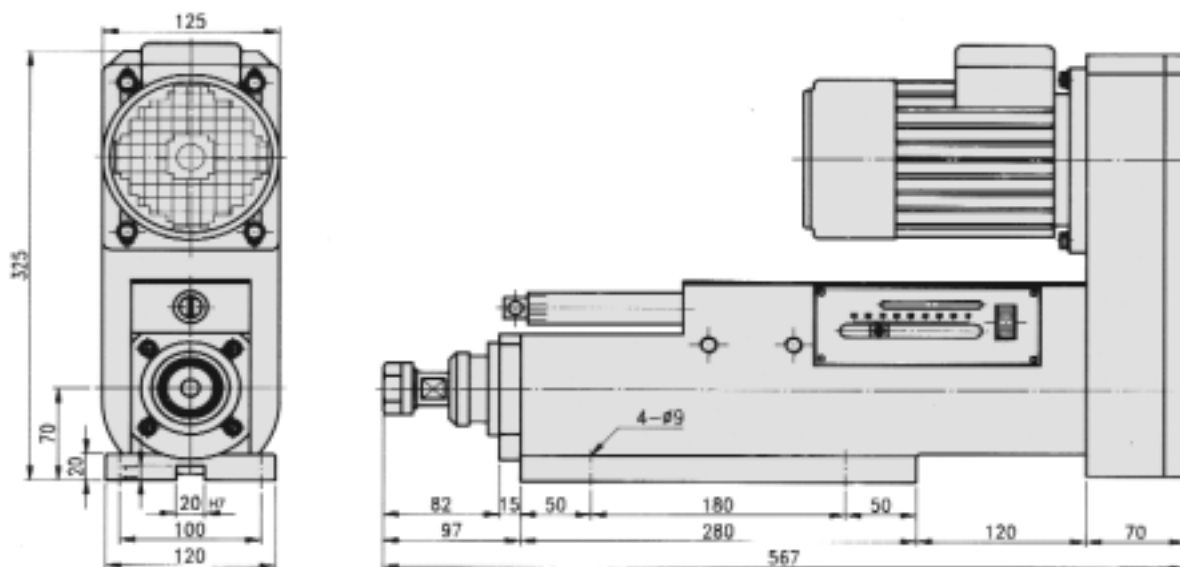
Specifications (Unit: metric)

Pneumatic Pressure	55 ~ 85 P.S.I.
Drilling Capacity	3/16" (steel) 70 P.S.I.
Chuck Type	ER-16-3/8", JT1-1/4", JT2-3/8"
Power	0.5HP-2p or 4p, 200V/440V-60HZ
Max. Revolution/Minute	6,000RPM
Weight	48 lb
Overall Stroke	2.25"
Drilling Stroke	1" or 2"
Cylinder Diameter	2"
Cylinder Area	Forward 2.45 IN ² , Backward 1.1 IN ²
Thrust Force	174 lb @ 70 P.S.I.
Transmission Pulley	V-SHAPE, 189J, 201J

Consumption Parts

Spindle Bearing	6002Zx2, 6001ZZx1
Pulley Bearing	6203ZZx2
O-Ring for Front Cover	GLY-40x1, N-50x1, DKB-40-52-6x1
O-Ring for Piston	OSY-50x2
O-Ring for Rear Cover	P-22x1, P-22Ax1, SER22x1
O-Ring for Sleeve	d1-50x2

PNEUMATIC DRILLING UNIT



Model FD55-80

Specifications (Unit: metric)

Pneumatic Pressure	55 ~ 85 P.S.I.
Drilling Capacity	5/16" (steel) 70 P.S.I.
Chuck Type	ER-20-1/2", JT6-1/2"
Power	0.5HP-2p or 4p, 1HP-2P or 4P, 200V/440V-60HZ
Max. Revolution/Minute	5,000RPM
Weight	84 lb
Overall Stroke	3"
Drilling Stroke	1" or 2"
Cylinder Diameter	2.5"
Cylinder Area	Forward 3.74 IN ² , Backward 1.8 IN ²
Thrust Force	265 lb @ 70 P.S.I.
Transmission Pulley	V-SHAPE, 201J, 220J

Consumption Parts

Spindle Bearing	a. 6004Zx2, 6003ZZx1 b. 7004x2, 7003x1
Pulley Bearing	6005ZZx1, 6205ZZx1
O-Ring for Front Cover	P-50x1, G-65x1, DKB-50, 62,7x1
O-Ring for Piston	OSY-63x2
O-Ring for Rear Cover	P-30x2, G-40x1, G45x1

Features

- RPM and chuck type should be given when placing order.
- There are two feed strokes, 1" and 2", to choose from.
- Equipped with internal electrical micro switch.
- Stroke and stopper adjustment can be done in one combined step.
- Motor and pulley location can be mounted around the circle in 45 degree interval.

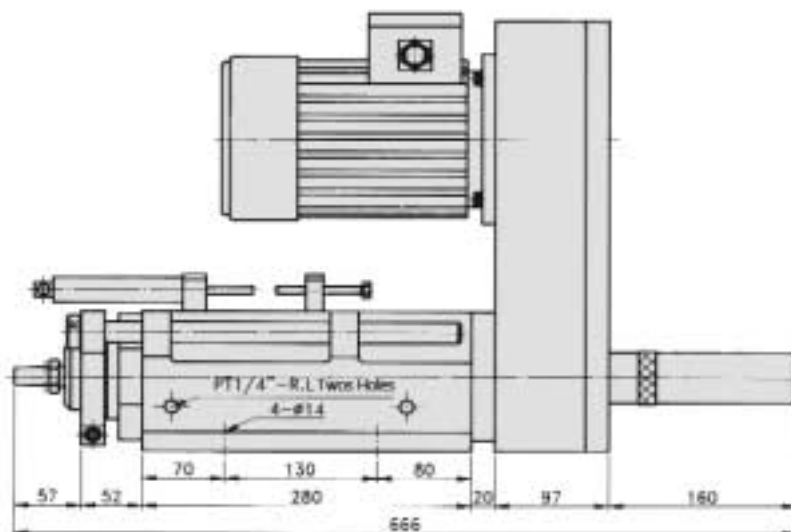
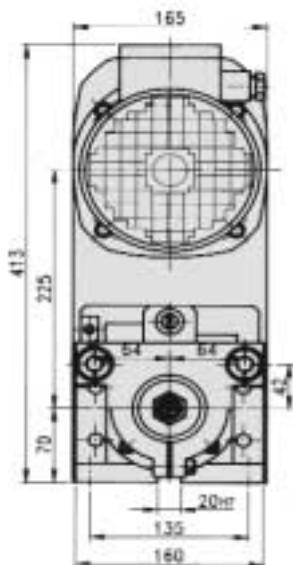


Spindle Options

(See page 50 for drawings and dimensions)

JT6 Pg. 50

ER20 Pg. 50



Model FD56-100

Features

- RPM and chuck type should be given when placing order.
- There are two feed strokes, 1" and 2", to choose from.
- Equipped with internal electrical micro switch.
- Capable of $\pm .0005$ with short dwell.
- Motor and pulley location can be mounted around the circle in 180 degree interval.



Spindle Options

(See page 50 for drawings and dimensions)

ER20	Pg. 50
JT6	Pg. 50
AS22	Pg. 50
ER25	Pg. 50
JT6 Multi	Pg. 50

Specifications (Unit: metric)

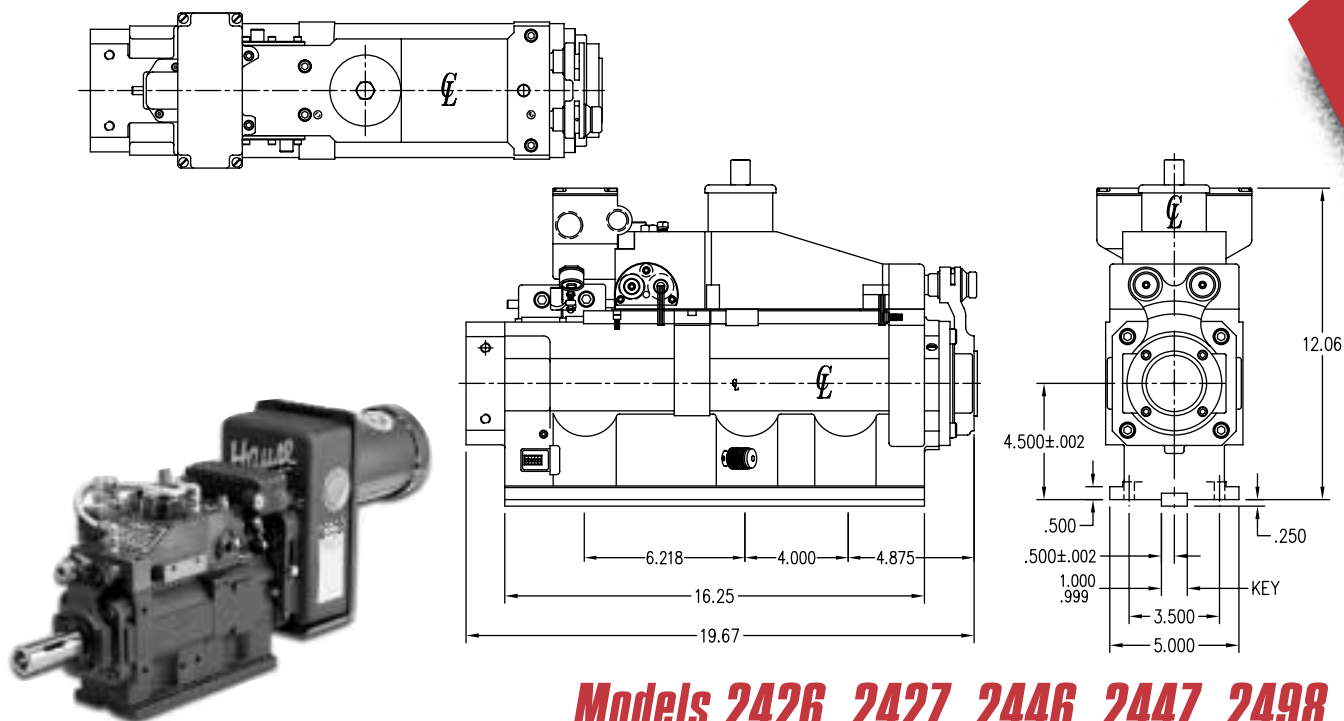
Pneumatic Pressure	70 ~ 85 P.S.I.
Drilling Capacity	1/2" (steel) 70 P.S.I.
Chuck Type	ER-20-1/2", JT6-1/2"
Power	1HP-2p or 4p, 2HP-2p or 4p, 220V/440V-60HZ
Max. Revolution/Minute	3,800RPM
Weight	125 lb
Overall Stroke	4"
Drilling Stroke	1" or 2"
Cylinder Diameter	2.5"
Cylinder Area	Forward 6.70 IN ² , Backward 4.75 IN ²
Transmission Pulley	a. A2-O.D.-4" b. H.T.D-5M-62T c. A3-O.D.-5"-4.3"-3.5"
Thrust Force	475 lb @ 70 P.S.I.

Consumption Parts

Spindle Bearing	a. 32005x1, 6005Zx1, 32004x1, 6004Zx1 b. 7005x2, 7004x2
Pulley Bearing	a. 6008Zx1, 51208x1 or 51108x1 b. 7008x2
O-Ring for Front Cover	P-58x2, G-80x2, UHS-58x1
O-Ring for Piston	OSY-80x2, G-45x1, P-30x1
O-Ring for Rear Cover	P-30x2, G-75x1

Any questions or to place an order, contact:
 Hausé Machines, Inc • 809 S. Pleasant St. • Montpelier, OH 43543
 800-932-8665 • 419-485-3158 • Fax 419-485-3146
 www.hausemachines.com

AIR HYDRAULIC DRILLING UNIT



Models 2426, 2427, 2446, 2447, 2498

Specifications (Unit: inch)

Model No.	Thrust Adv./Ret. @ 80 psi	Stroke	Quill Dia.	Max. Spindle Speed	Min. Spindle Speed	Retract Feed	Oil Filler Style
2426	680/280	4"	3.500"	6000	120	Yes	Pressurized
2427	680/280	4"	3.500"	6000	120	No	Pressurized
2446	680/280	4"	3.500"	6000	120	Yes	Pressurized
2447	680/280	4"	3.500"	6000	120	No	Pressurized
2498	680/280	4"	3.500"	6000	120	Peck Feed	Pressurized

Customizing A Hause Unit To Your Specs

Most Hause power feed units can be customized to best fit the needs of your unique applications. Using the worksheet at the back of this catalog and the information found on pages 36 - 49, you can spec out the Hause unit of your choice.

Model	Spindle	Drive	Belt/Pulley	Motor	Belt Housing	Special
2427	- BE	- A	- A	- N	- C2	-
	Pgs. 36-37	Pgs. 38-39	Pgs. 40-41	Pgs. 42-44	Pg. 45	Pgs. 46-49

Example: 2427-BE-A-A-N-C2 This code specifies an Air Hydraulic Drilling unit (Model No. 2427) with a 4" stroke. Accessorizing this unit is a 1-1/16" Adjustable Adapter Spindle, In-line Shaft Drive, 5-Step "3V" Section Pulley, a 2 HP (1800 RPM) Nema "C" Flange Mounted Motor, mounted to the right side on an Extended Belt Housing.

Features

- Concentric construction.
- Pressure compensating feed valves.
- Belt housing/position choices.
- Various spindle and drive choices.
- Pulley and RPM choices.

Note: Models 2426-2427 are for horizontal type applications and Models 2446-2447 are for vertical type applications. The 2498 can be used vertically or horizontally.

Feed rates

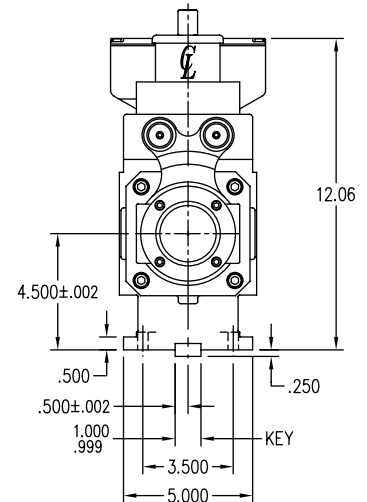
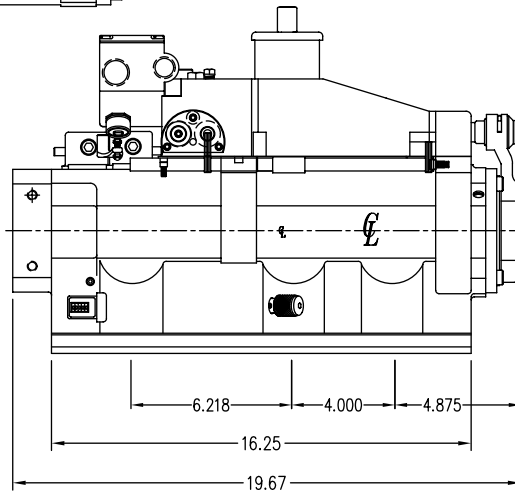
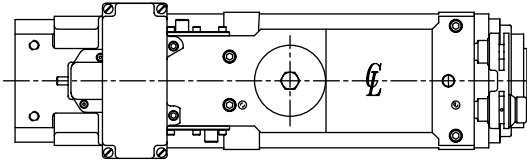
Adv: Adjustable from 3/8" to 125" per minute.

Ret: Adjustable from 3/8" to 125" per minute.

Rapid travel 1000 I.P.M. approx.

Any questions or to place an order, contact:
 Hause Machines, Inc • 809 S. Pleasant St. • Montpelier, OH 43543
 800-932-8665 • 419-485-3158 • Fax 419-485-3146
 www.hausemachines.com

AIR HYDRAULIC DRILLING UNIT



Models 2626, 2627, 2646, 2647, 2698

Specifications (Unit: inch)

Model No.	Thrust Adv./Ret. @ 80 psi	Stroke	Quill Dia.	Max. Spindle Speed	Min. Spindle Speed	Retract Feed	Oil Filler Style
2626	680/280	6"	3.500"	6000	120	Yes	Pressurized
2627	680/280	6"	3.500"	6000	120	No	Pressurized
2646	680/280	6"	3.500"	6000	120	Yes	Pressurized
2647	680/280	6"	3.500"	6000	120	No	Pressurized
2698	680/280	6"	3.500"	6000	120	Peck Feed	Pressurized

Features

- Concentric construction.
- Pressure compensating feed valves.
- Belt housing/position choices.
- Various spindle and drive choices.
- Pulley and RPM choices.

Note: Models 2626-2627 are for horizontal type applications and Models 2646-2647 are for vertical type applications. The 2698 can be used vertically or horizontally.

Feed rates

Adv: Adjustable from 3/8" to 125" per minute.

Ret: Adjustable from 3/8" to 125" per minute.

Rapid travel 1000 I.P.M. approx.

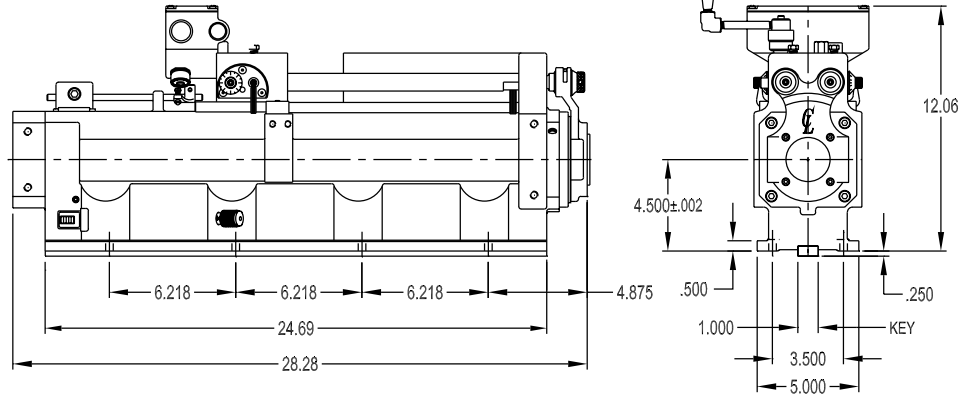
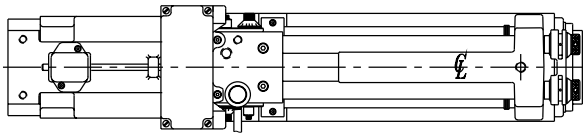
Customizing A Hause Unit To Your Specs

Most Hause power feed units can be customized to best fit the needs of your unique applications. Using the worksheet at the back of this catalog and the information found on pages 36 - 49, you can spec out the Hause unit of your choice.

Model	Spindle	Drive	Belt/Pulley	Motor	Belt Housing	Special
2646	- AT	- F	- F	- M	- AI	-
	Pgs. 36-37	Pgs. 38-39	Pgs. 40-41	Pgs. 42-44	Pg. 45	Pgs. 46-49

Example: 2646-ATF-F-M-AI This code specifies an Air Hydraulic Drilling unit (Model No. 2646) with a 6" stroke. Accessorizing this unit is a #4 Morse Taper Spindle, Planetary Reduction 6:1 Drive, a 2 HP (1200 RPM) Nema "C" Flange Mounted Motor, mounted to the top on an Overhead Belt Housing.

AIR HYDRAULIC DRILLING UNIT



Models 2196, 2197, 2198

Specifications (Unit: inch)

Model No.	Thrust Adv./Ret. @ 80 psi	Stroke	Quill Dia.	Max. Spindle Speed	Min. Spindle Speed	Retract Feed	Oil Filler Style
2196	680/280	10"	3.50"	6000	120	Yes	*Filler Valve
2197	680/280	10"	3.50"	6000	120	No	*Filler Valve
2198	680/280	10"	3.50"	6000	120	Peck Feed	Pressurized

*Pressurized oil filler optional

Customizing A Hause Unit To Your Specs

Most Hause power feed units can be customized to best fit the needs of your unique applications. Using the worksheet at the back of this catalog and the information found on pages 36 - 49, you can spec out the Hause unit of your choice.

Model	Spindle	Drive	Belt/Pulley	Motor	Belt Housing	Special
2197	- BK	- A	- A	- N	- B2	- SA1
	Pgs. 36-37	Pgs. 38-39	Pgs. 40-41	Pgs. 42-44	Pg. 45	Pgs. 46-49

Example: 2197-BK-A-A-N-B2-SA1 This code specifies an Air Hydraulic Drilling unit (Model No. 2197) with a 10" stroke. Accessorizing this unit is a 1-3/8" Adjustable Adapter Spindle, Inline Shaft Drive, 5-Step "3V" Section Pulley, a 2 HP (1800 RPM) Nema "C" Flange Mounted Motor, mounted to the right side on a Small Extended Belt Housing and accompanied by a Special 4" Spindle Support Assembly.

Features

- Concentric construction.
- Pressure compensating feed valves.
- Belt housing/position choices.
- Various spindle and drive choices.
- Pulley and RPM choices.
- Other options available.

All models can be used vertically or horizontally.

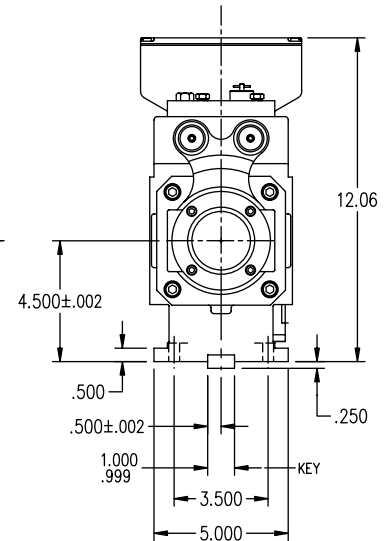
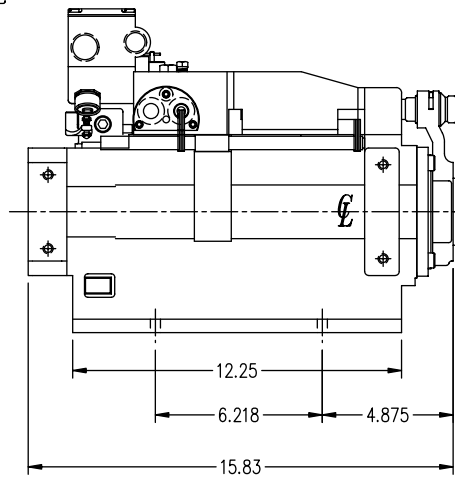
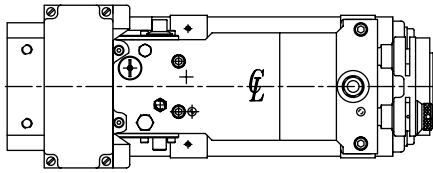
Feed rates

Adv: Adjustable from 3/8" to 125" per minute.

Ret: Adjustable from 3/8" to 125" per minute.

Rapid travel 1000 I.P.M. approx.

HYDRAULIC DRILLING UNIT



Models 6414, 6415

Specifications (Unit: inch)

Model No.	Thrust Adv./Ret. @ 500 psi	Stroke	Quill Dia.	Max. Spindle Speed	Min. Spindle Speed	Retract Feed	Oil Filler Style
6414	2750/1500	4"	3.500"	5000	80	Yes	N/A
6415	2750/1500	4"	3.500"	5000	80	No	N/A

Features

- Concentric construction.
- Pressure compensating feed valves
- Belt housing/position choices.
- Various spindle and drive choices.
- Pulley and RPM choices.
- Thrust up to 4250# available.
- Other options available.

All models can be used vertically or horizontally.

Feed rate

Adv. 1/4" to 75" per minute.

Ret. 1/4" to 60" per minute.

Rapid travel: 190 I.P.M. approx.

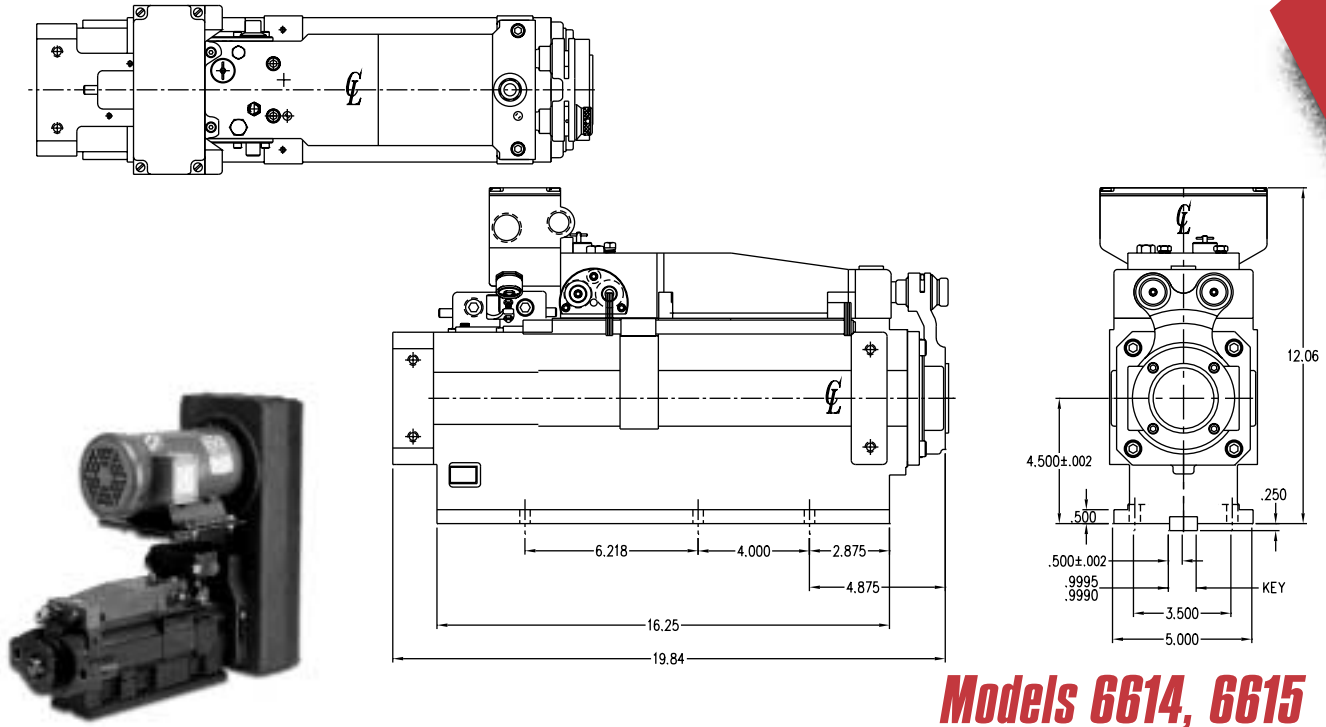
Customizing A Hause Unit To Your Specs

Most Hause power feed units can be customized to best fit the needs of your unique applications. Using the worksheet at the back of this catalog and the information found on pages 36 - 49, you can spec out the Hause unit of your choice.

Model	Spindle	Drive	Belt/Pulley	Motor	Belt Housing	Special
6414	- BR	- Y	- H	- S	- CI	-
	Pgs. 36-37	Pgs. 38-39	Pgs. 40-41	Pgs. 42-44	Pg. 45	Pgs. 46-49

Example: 6414-BR-Y-H?-CI This code specifies a Hydraulic Drilling unit (Model No. 6414) with a 4" stroke. Accessorizing this unit is a 1-7/8" High Torque Adjustable Adapter Spindle, High Torque 4.2:1 Reduction Drive, Timing Belt & Pulley with RPMs specified by customer, a 5 HP (1200 RPM) Nema "C" Flange Mounted Motor, mounted to the top on an Extended Belt Housing.

HYDRAULIC DRILLING UNIT



Models 6614, 6615

Specifications (Unit: inch)

Model No.	Thrust Adv./Ret. @ 500 psi	Stroke	Quill Dia.	Max. Spindle Speed	Min. Spindle Speed	Retract Feed	Oil Filler Style
6614	2750/1500	6"	3.500"	5000	80	Yes	N/A
6615	2750/1500	6"	3.500"	5000	80	No	N/A

Customizing A Hause Unit To Your Specs

Most Hause power feed units can be customized to best fit the needs of your unique applications. Using the worksheet at the back of this catalog and the information found on pages 36 - 49, you can spec out the Hause unit of your choice.

Model	Spindle	Drive	Belt/Pulley	Motor	Belt Housing	Special
6615	- AQ	- I	- B	- P	- A4	-
	Pgs. 36-37	Pgs. 38-39	Pgs. 40-41	Pgs. 42-44	Pg. 45	Pgs. 46-49

Example: 6615-AQ-IB-PA4 This code specifies a Hydraulic Drilling unit (Model No. 6615) with a 6" stroke. Accessorizing this unit is a #3 Morse Taper Spindle, Standard Hi-Lo Reduction Drive, 5-Step "B" Section Pulley, a 3 HP (1200 RPM) Nema "C" Flange Mounted Motor, mounted to the left side on an Overhead Belt Housing.

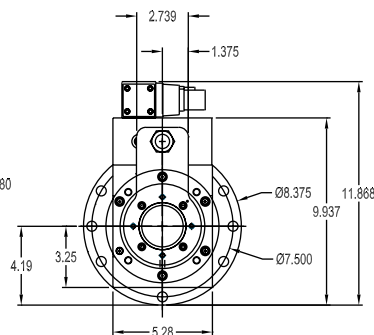
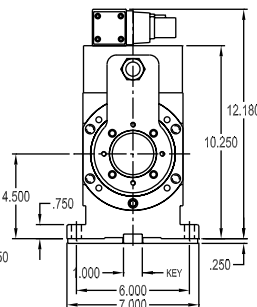
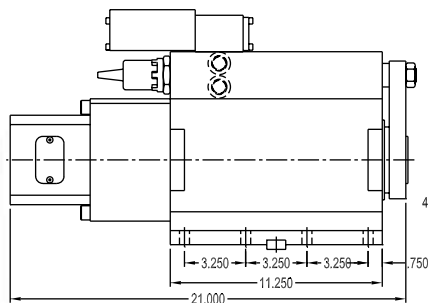
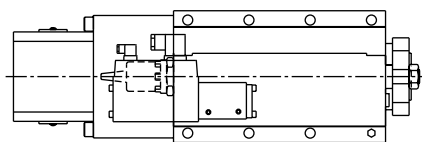
Features

- Concentric construction.
- Pressure compensating feed valves.
- Belt housing/position choices.
- Various spindle and drive choices.
- Pulley and RPM choices.
- Thrust up to 4250# available
- Other options available.

All models can be used vertically or horizontally.

Feed rate
 Adv. 1/4" to 75" per minute.
 Ret. 1/4" to 60" per minute.
 Rapid travel: 190 I.P.M. approx.

HYDRAULIC DRILLING UNIT



Models 6629, 6639
Models 6649, 6659 are Flange Mount

Specifications (Unit: inch)

Model No.	Thrust Adv./Ret. @ 1000 psi	Stroke	Quill Dia.	Max. Spindle Speed	Min. Spindle Speed	Retract Feed	Depth Repeat-ability
6629*	3000/3000	6"	3.500"	5000	80	Programmable	+/- .0005
6639**	3000/3000	6"	3.500"	5000	80	Programmable	+/- .0005
6649*	3000/3000	6"	3.500"	5000	80	Programmable	+/- .0005
6659**	3000/3000	6"	3.500"	5000	80	Programmable	+/- .0005

* Denotes Temposonic probe

** Denotes Sony encoder feedback

Features

- Full programmability.
- Belt housing/position choices.
- Various spindle and drive choices.
- Pulley and RPM choices.
- Other options available.

All models can be used vertically or horizontally.

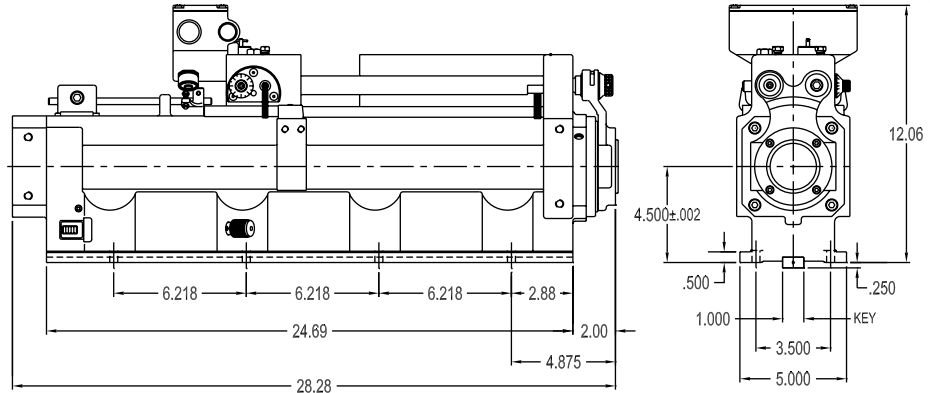
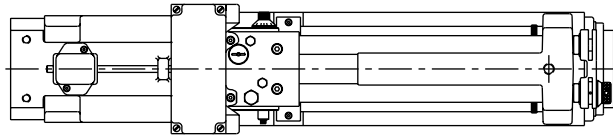
Customizing A Hause Unit To Your Specs

Most Hause power feed units can be customized to best fit the needs of your unique applications. Using the worksheet at the back of this catalog and the information found on pages 36 - 49, you can spec out the Hause unit of your choice.

Model	Spindle	Drive	Belt/Pulley	Motor	Belt Housing	Special
6629	- BE	- N	- N/A	- Q	-	- C3
	Pgs. 36-37	Pgs. 38-39	Pgs. 40-41	Pgs. 42-44	Pg. 45	Pgs. 46-49

Example: 6629-BE-N-N/A-Q-C3 This code specifies a Hydraulic Drilling unit (Model No. 6629) with a 6" stroke. Accessorizing this unit is a 1-1/16" Adjustable Adapter Spindle, 1-1/8" Direct Drive, no Belt/Pulley system, a 3 HP (1800 RPM) Nema "C" Flange Mounted Motor. No Belt Housing required.

HYDRAULIC DRILLING UNIT



Models 6194, 6195

Specifications (Unit: inch)

Model No.	Thrust Adv./Ret. @ 500 psi	Stroke	Quill Dia.	Max. Spindle Speed	Min. Spindle Speed	Retract Feed	Oil Filler Style
6194	2750/1500	10"	3.500"	5000	80	Yes	N/A
6195	2750/1500	10"	3.500"	5000	80	No	N/A

Customizing A Hause Unit To Your Specs

Most Hause power feed units can be customized to best fit the needs of your unique applications. Using the worksheet at the back of this catalog and the information found on pages 36 - 49, you can spec out the Hause unit of your choice.

Model	Spindle	Drive	Belt/Pulley	Motor	Belt Housing	Special
6194	- BK	- A	- A	- Q	- AI	-
	Pgs. 36-37	Pgs. 38-39	Pgs. 40-41	Pgs. 42-44	Pg. 45	Pgs. 46-49

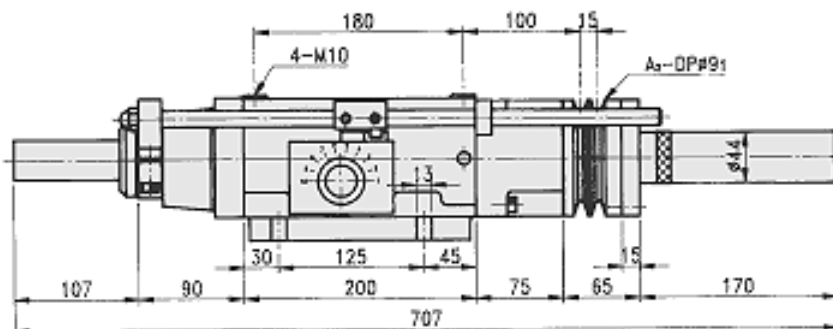
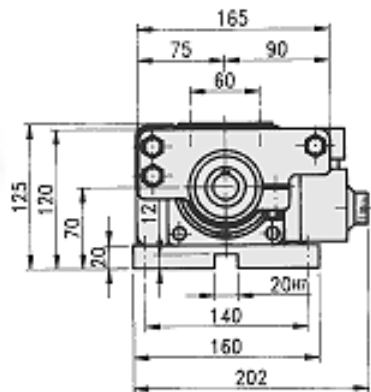
Example: 6194-BK-A-A-Q-AI This code specifies a Hydraulic Drilling unit (Model No. 6194) with a 10" stroke. Accessorizing this unit is a 1-3/8" Adjustable Adapter Spindle, Inline Shaft Drive, 5-Step "3V" Section Pulley, a 3 HP (1800 RPM) Nema "C" Flange Mounted Motor, mounted to the left side on an Overhead Belt Housing.

Features

- Concentric construction.
- Pressure compensating feed valves.
- Belt housing/position choices.
- Various spindle and drive choices.
- Pulley and RPM choices.
- Thrust up to 4250# available.
- Other options available.

All models can be used vertically or horizontally.

Feed rate
 Adv. 1/4" to 75" per minute.
 Ret. 1/4" to 60" per minute.
 Rapid travel: 190 I.P.M. approx.



Model FD6-130

Features

- High RPM application is available, specify this requirement when placing order.
- Left side mounted fitting holes and flow control valve are available.
- Capable of $\pm .0005$ with short dwell.



Spindle Options

(See page 51 for drawings and dimensions)

ER20	Pg. 51
JT6	Pg. 51
AS22	Pg. 51
MT3	Pg. 51
ER25	Pg. 51
JT6 Multi	Pg. 51
MT2	Pg. 51

Specifications (Unit: metric)

Hydraulic Pressure	280 ~ 350 P.S.I.
Drilling Capacity	5/8" (steel)
Stroke	4.7"
Max. Revolution/Minute	2,000RPM
Flow Control Valve	FCC-G02-4
Weight	70.5 lb
Cylinder Diameter	3"
Cylinder Area	Forward 6.70 IN ² , Backward 4.75 IN ²
Thrust Force	1900 lb @ 280 P.S.I.

Consumption Parts

O-Ring for Front Cover	P-58x2, G-75x1
O-Ring for Piston	P-70x2, G-45x1
O-Ring for Rear Cover	P-30x2, G-40x1, G-75x1
Spindle Bearing	a. 32005x1, 6005Zx1, 32004x1, 6004Zx1 b. 7005x2, 7004x2
Pulley Bearing	a. 6008Zx1, 51208x1 or 51108x1 b. 7008x2