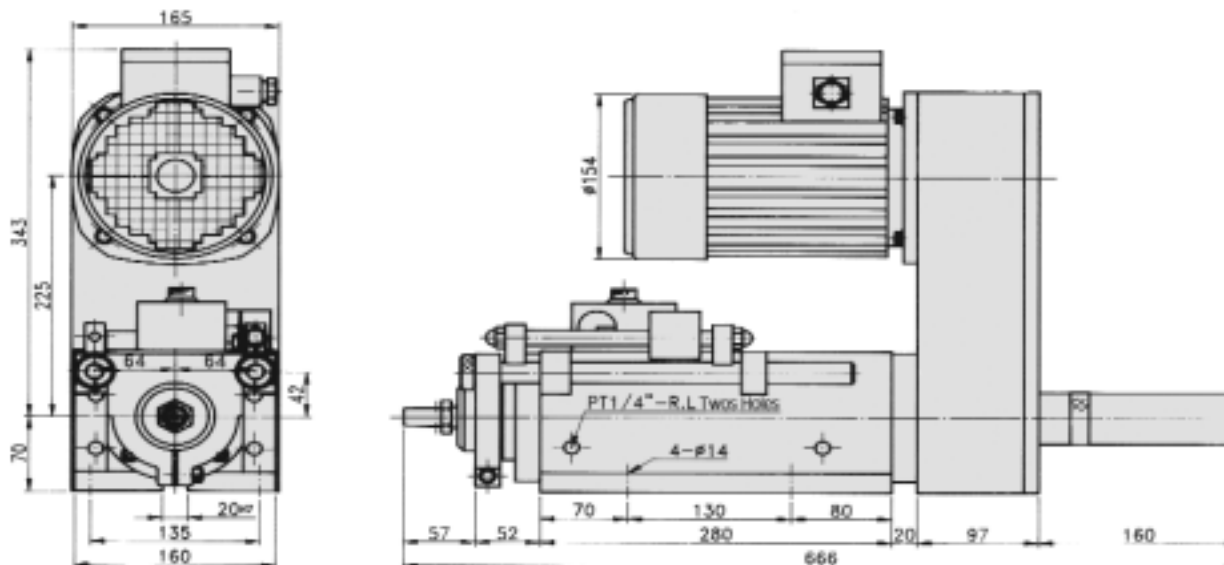


# HYDRAULIC DRILLING UNIT



## Model FD62-100

### Specifications (Unit: metric)

Hydraulic Pressure	280 ~ 350 P.S.I.
Drilling Capacity	5/8" (steel)
Power	1HP-2P or 4P, 230V/460V
Stroke	4"
Max. Revolution/Minute	2,000RPM
Flow Control Valve	FCC-G02-4
Weight	145 lb
Cylinder Diameter	3"
Cylinder Area	Forward 6.70 IN <sup>2</sup> , Backward 4.75 IN <sup>2</sup>
Thrust Force	1900 lb @ 280 P.S.I.
Transmission	a. A2-O.D.-4" b. H.T.D.-5M-62T c. Step pulley O.D.-5"-4.3"-3.5"

### Consumption Parts

O-Ring for Front Cover	P-58x2, G-80x2
O-Ring for Piston	P-70x2, G-45x1
O-Ring for Rear Cover	P-30x2, G-75x1
Spindle Bearing	a. 32005x1, 6005Zx1, 32004x1, 6004Zx1 b. 7005x2, 7004x2
Pulley Bearing	a. 6008Zx1, 51208x1 or 51108x1 b. 7008x2

### Features

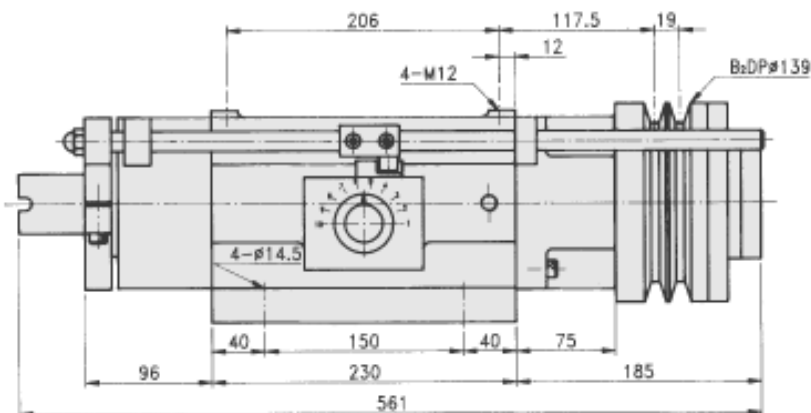
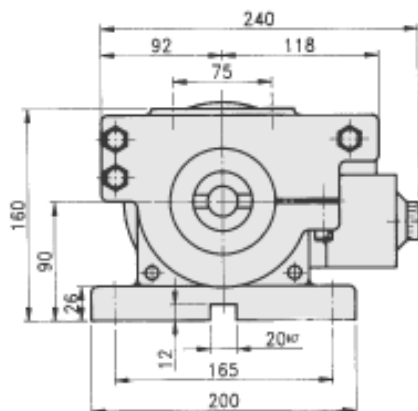
- High RPM application is available, specify this requirement when placing order.
- Left side mounted fitting holes and flow control valve are available.
- Capable of  $\pm .0005$  with short dwell.



### Spindle Options

(See page 51 for drawings and dimensions)

ER20	Pg. 51
JT6	Pg. 51
AS22	Pg. 51
ER25	Pg. 51
JT6 Multi	Pg. 51



## Model FD7-150

### Features

- The unit can be mounted on machine with its base or front end.
- Left side mounted fitting holes and flow control valve are available, specify this requirement when placing order.
- Capable of  $\pm .0005$  repeatability with short dwell.
- If mounting multiple spindle head to this unit, please choose nose type: FD-7M-150MT3B.



### Spindle Options

(See page 52 for drawings and dimensions)

AS32	Pg. 52
ER40	Pg. 52
FB30	Pg. 52
MT3A	Pg. 52
MT3B	Pg. 52
MT3B Multi	Pg. 52

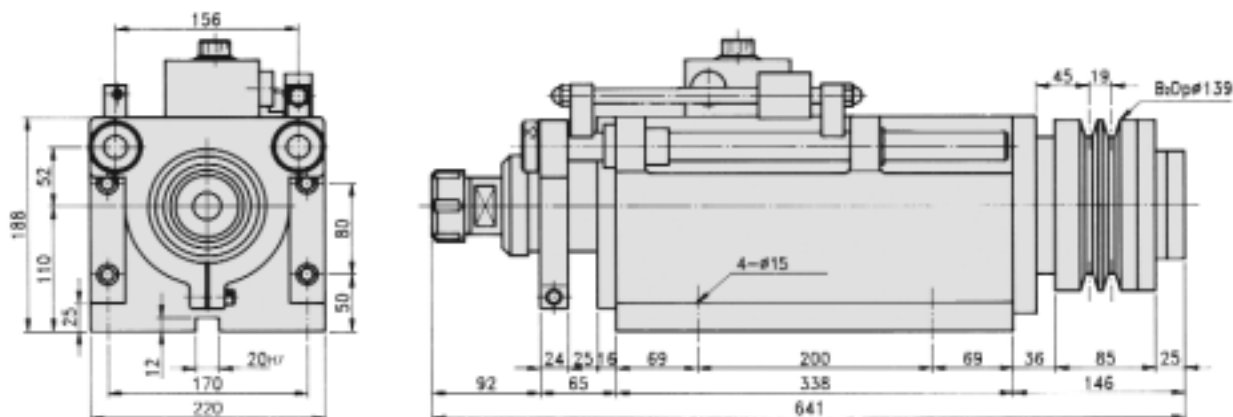
### Specifications (Unit: metric)

Hydraulic Pressure	280 ~ 350 P.S.I.
Drilling Capacity	1" (steel)
Stroke	5.5"
Max. Revolution/Minute	1,500RPM
Flow Control Valve	FCC-G03-8
Weight	140 lb
Cylinder Diameter	4.33"
Cylinder Area	Forward 11.0 IN <sup>2</sup> , Backward 6.95 IN <sup>2</sup>
Thrust Force	3124 lb @ 280 P.S.I.

### Consumption Parts

O-Ring for Front Cover	P-80x2, G-105x1, DH-80x1
O-Ring for Piston	P-100x2, G-65x1
O-Ring for Rear Cover	P-55x2, G-105x1
Spindle Bearing	32008x1, 32007x1, 6007x1, 6007Zx1
Pulley Bearings	6013Zx1, 51213x1

# HYDRAULIC DRILLING UNIT



## Model FD75-100

### Specifications (Unit: metric)

Hydraulic Pressure	280 ~ 490 P.S.I.
Drilling Capacity	1 1/4" (steel)
Stroke	4"
Max. Revolution/Minute	1,000RPM
Flow Control Valve	FCC-G03-8
Weight	187 lb
Cylinder Diameter	4.33"
Cylinder Area	Forward 11.0 IN <sup>2</sup> , Backward 6.95 IN <sup>2</sup>
Thrust Force	3124 lb @ 280 P.S.I.

### Consumption Parts

O-Ring for Front Cover	P-80x2, G-105x3, DH-80x1
O-Ring for Piston	P-100x2, G-65x1
O-Ring for Rear Cover	P-55x2, G-105x1
Spindle Bearing	32008x1, 32007x1, 6007Zx1, 6008Zx1
Pulley Bearings	6013Zx1, 51213x1

### Features

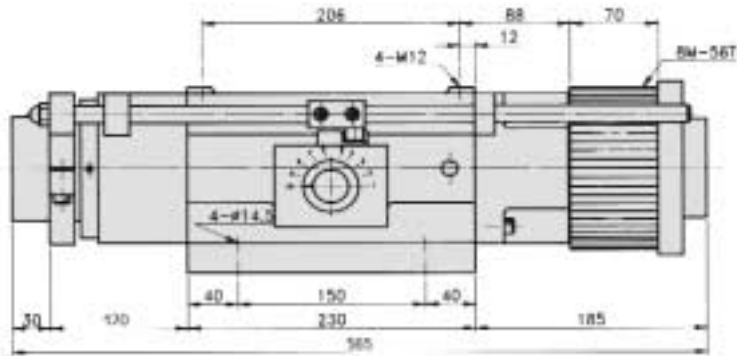
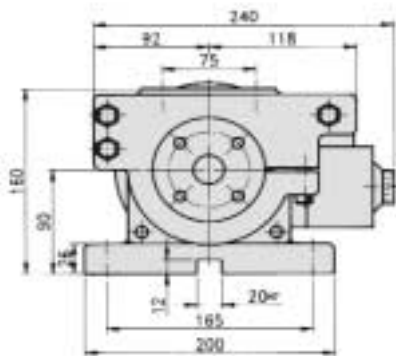
- High RPM application is available, specify this requirement when placing order.
- Left side mounted fitting holes and flow control valve are available, specify this requirement when placing order.
- Capable of  $\pm .0005$  with short dwell.
- If mounting multiple spindle head to this unit, please choose nose type: FD-75-100MT3A is recommended.



### Spindle Options

(See page 52 for drawings and dimensions)

ER40	Pg. 52
FB30	Pg. 52
FD75-100-MT3A Multi	Pg. 52



## Model FD8-150

### Features

- High RPM application is available, specify this requirement when placing order.
- Left side mounted fitting holes and flow control valve are available, specify this requirement when placing order.
- Capable of  $\pm .0005$  with short dwell.
- If mounting multiple spindle head to this unit, please choose nose type: FD-8M-150MT4B is recommended.



### Spindle Options

(See page 52-53 for drawings and dimensions)

ER40	Pg. 52
FB30	Pg. 52
NT40	Pg. 52
ER50	Pg. 52
MT4A	Pg. 52
MT4B	Pg. 52
MT4B Multi	Pg. 53

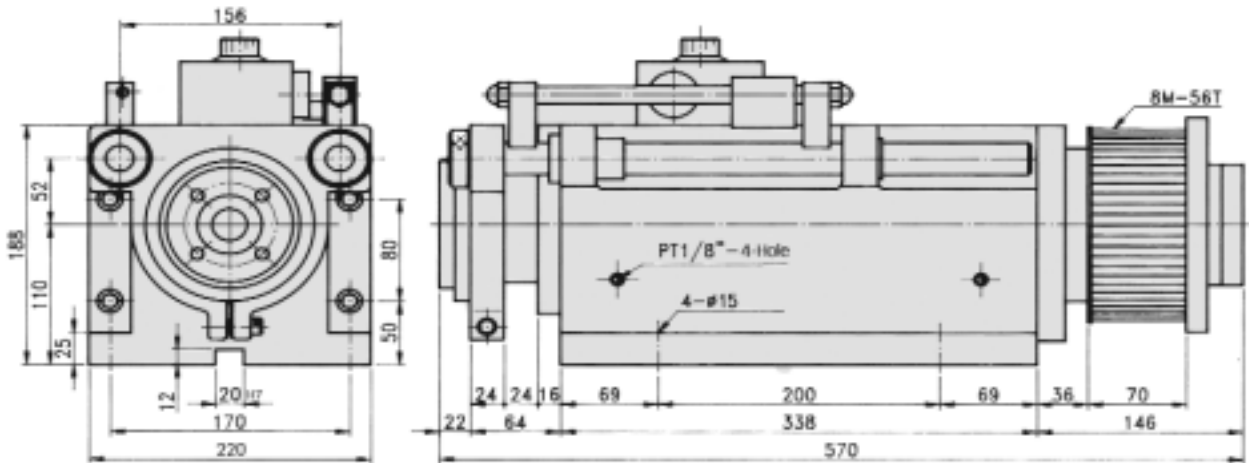
### Specifications (Unit: metric)

Hydraulic Pressure	280 ~ 490 P.S.I.
Drilling Capacity	1 3/8" (steel)
Stroke	5.5"
Max. Revolution/Minute	1,500RPM
Flow Control Valve	FCC-G03-8
Weight	148 lb
Cylinder Diameter	4.33"
Cylinder Area	Forward 11.0 IN <sup>2</sup> , Backward 4.87 IN <sup>2</sup>
Thrust Force	3124 lb @ 280 P.S.I.

### Consumption Parts

O-Ring for Front Cover	P-90x2, G-115x1, DH-90x1
O-Ring for Piston	P-100x2, G-65x1
O-Ring for Rear Cover	P-55x2, G-105x1
Spindle Bearing	33010x1, 32008x1, 6010Zx1, 6008Zx1
Pulley Bearings	6013Zx1, 51213x1

# HYDRAULIC DRILLING UNIT



## Model FD85-100

### Specifications (Unit: metric)

Hydraulic Pressure	280 ~ 350 P.S.I.
Drilling Capacity	1 5/8" (steel)
Stroke	4"
Max. Revolution/Minute	1,800RPM
Flow Control Valve	FCC-G03-8
Weight	187 lb
Cylinder Diameter	4.33"
Cylinder Area	Forward 11.0 IN <sup>2</sup> , Backward 4.87 IN <sup>2</sup>
Thrust Force	3124 lb @ 280 P.S.I.

### Consumption Parts

O-Ring for Front Cover	P-90x2, G-105x3, DH-90x1
O-Ring for Piston	P-100x2, G-65x1
O-Ring for Rear Cover	P-55x2, G-105x1
Spindle Bearing	33010x1, 32008x1, 6010Zx1, 6008Zx1
Pulley Bearings	6013Zx1, 51213x1

### Features

- High RPM application is available, specify this requirement when placing order.
- Left side mounted fitting holes and flow control valve are available, specify this requirement when placing order.
- Capable of  $\pm .0005$  with short dwell.
- If mounting multiple spindle head to this unit, please choose nose type: FD-85M-100MT4B is recommended.

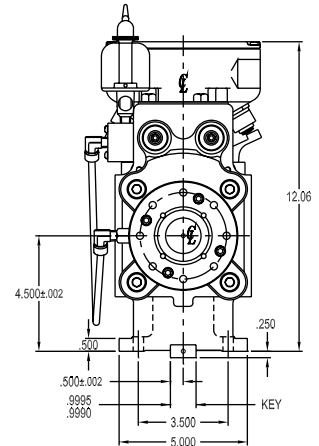
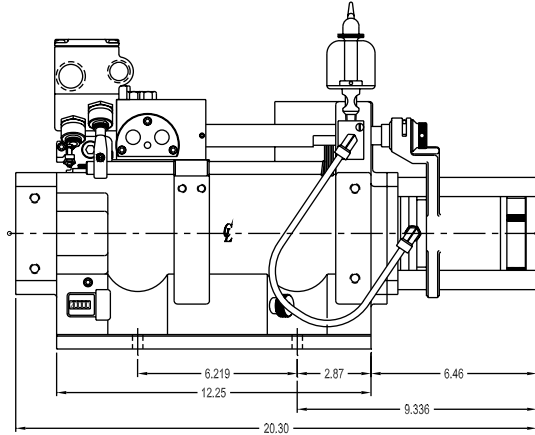
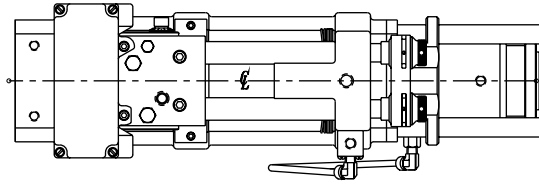


### Spindle Options

(See page 53 for drawings and dimensions)

FB30	Pg. 53
MT4A	Pg. 53
MT4B Multi	Pg. 53

# LEAD SCREW TAPPING UNIT



## Models 3496, 3497

### Specifications (Unit: inch)

Model No.	Thrust Adv./Ret.	Stroke Total	Screw Length	Max. Spindle Speed	Min. Spindle Speed	Pitches Avail.	Rapid Travel (Air)
3496	N/A	4"	2" of total	2000	80	Std/Metric	Yes
3497*	N/A	4"	2" of total	1000	80	Std/Metric	Yes

\*Note: For single spindle application add "ZZ" to "Special" column on order form.

### Features

- Rapid travel before lead screw engagement of work piece.
- Interchangeable lead screws and nuts.
- Depth repeatability of 1/8th revolution @ 1000 rpm's.
- Full adjustability for rapid and feed distances.
- Pulley and RPM choices.
- Belt housing/position choices.
- Various spindle and drive choices.

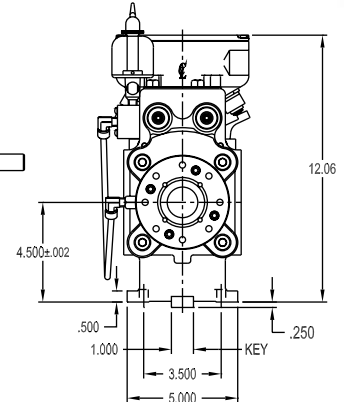
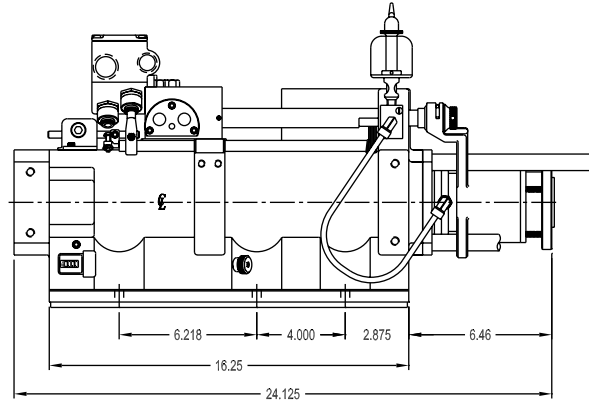
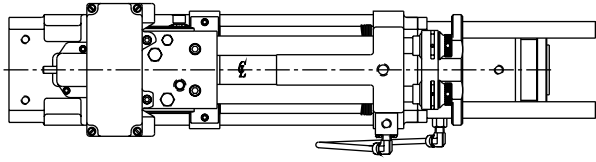
### Customizing A Hause Unit To Your Specs

Most Hause power feed units can be customized to best fit the needs of your unique applications. Using the worksheet at the back of this catalog and the information found on pages 36 - 49, you can spec out the Hause unit of your choice.

Model	Spindle	Drive	Belt/Pulley	Motor	Belt Housing	Special
3496	- BO	- V	- H/280	- DD	- AI	-
	Pgs. 36-37	Pgs. 38-39	Pgs. 40-41	Pgs. 42-44	Pg. 45	Pgs. 46-49

**Example: 3496-BO-V-H/280-DD-AI** This code specifies a Lead Screw Tapping unit (Model No. 3496) with a 4" stroke. Accessorizing this unit is a 1-1/2" Adjustable Adapter Spindle, 4.2:1 Reduction Drive, Timing Belt & Pulley with 280 RPM, a 2.4 HP (1145 RPM) Demag Motor, mounted to the top on an Overhead Belt Housing.

# LEAD SCREW TAPPING UNIT



## Models 3696, 3697, 3698

### Specifications (Unit: inch)

Model No.	Thrust Adv./Ret.	Stroke Total	Screw Length	Max. Spindle Speed	Min. Spindle Speed	Pitches Avail.	Rapid Travel (Air)
3696	N/A	6"	2" of total	2000	80	Std/Metric	Yes
3697*	N/A	6"	2" of total	1000	80	Std/Metric	Yes
3698*	N/A	6"	4" of total	1000	80	Std/Metric	Yes

\*Note: For single spindle application add "ZZ" to "Special" column on order form.

### Customizing A Hause Unit To Your Specs

Most Hause power feed units can be customized to best fit the needs of your unique applications. Using the worksheet at the back of this catalog and the information found on pages 36 - 49, you can spec out the Hause unit of your choice.

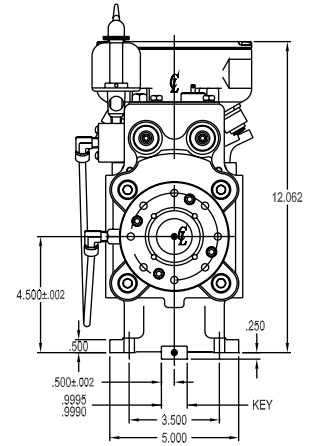
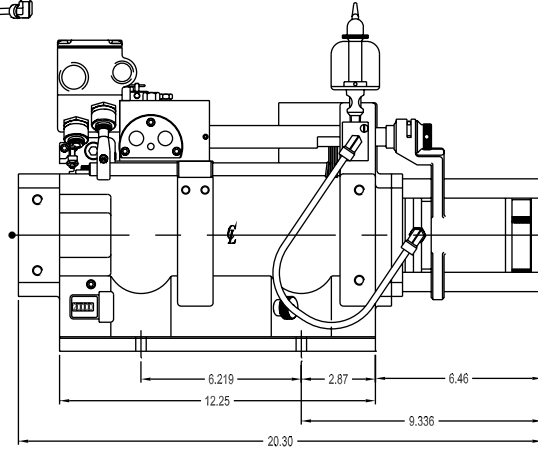
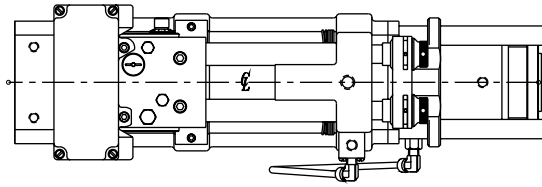
Model	Spindle	Drive	Belt/Pulley	Motor	Belt Housing	Special
3697	- BT	- Y	- H/180	- EE	- C3	-
	Pgs. 36-37	Pgs. 38-39	Pgs. 40-41	Pgs. 42-44	Pg. 45	Pgs. 46-49

**Example: 3697-BT-Y-H/180-EE-C3** This code specifies a Lead Screw Tapping unit (Model No. 3697) with a 6" stroke. Accessorizing this unit is a High Torque Lead Screw, 1-7/8" Adjustable Adapter Spindle, High Torque 4.2:1 Reduction Drive, Timing Belt & Pulley with 180 RPM, a 3.5 HP (1140 RPM) Demag Motor, mounted to the bottom on an Extended Belt Housing.

### Features

- Rapid travel before lead screw engagement of work piece.
- Interchangeable lead screws and nuts.
- Depth repeatability of 1/8th revolution @ 1000 rpm's.
- Full adjustability for rapid and feed distances.
- Pulley and RPM choices.
- Belt housing/position choices.
- Various spindle and drive choices.

# LEAD SCREW TAPPING UNIT



## Models 5496, 5497

### Specifications (Unit: inch)

Model No.	Thrust Adv./Ret.	Stroke	Screw Length	Max. Spindle Speed	Min. Spindle Speed	Pitches Avail.	Rapid Travel (Hyd)
5496	N/A	4"	2" of total	2000	80	Std/Metric	Yes
5497*	N/A	4"	2" of total	1000	80	Std/Metric	Yes

\*Note: For single spindle application add "ZZ" to "Special" column on order form.

### Features

- Rapid travel before lead screw engagement of work piece.
- Interchangeable lead screws and nuts.
- Depth repeatability of 1/8th revolution @ 1000 rpm's.
- Full adjustability for rapid and feed distances.
- Pulley and RPM choices.
- Belt housing/position choices.
- Various spindle and drive choices.

### Customizing A Hause Unit To Your Specs

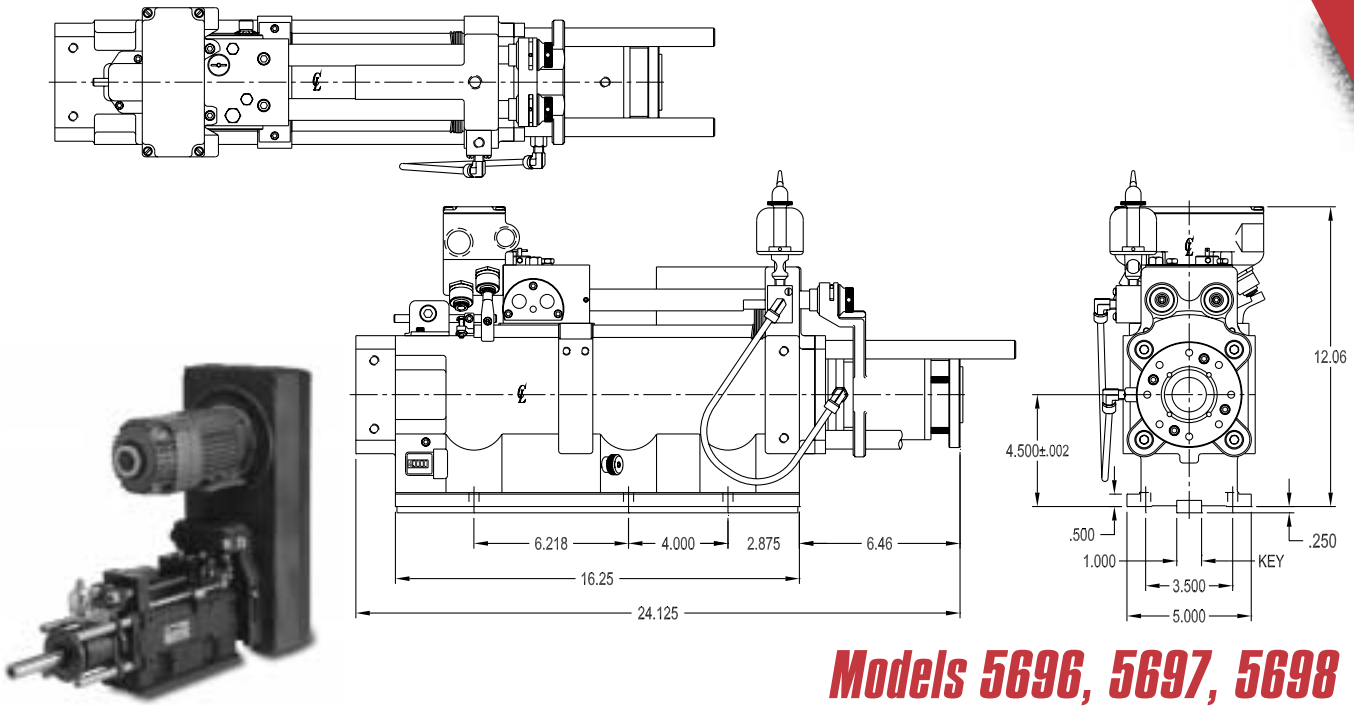
Most Hause power feed units can be customized to best fit the needs of your unique applications. Using the worksheet at the back of this catalog and the information found on pages 36 - 49, you can spec out the Hause unit of your choice.

Model	Spindle	Drive	Belt/Pulley	Motor	Belt Housing	Special
5496	- AC	- A	- C	- CC	- C4	-
	Pgs. 36-37	Pgs. 38-39	Pgs. 40-41	Pgs. 42-44	Pg. 45	Pgs. 46-49

**Example: 5496-AC-A-C-CC-C4** This code specifies a Lead Screw Tapping unit (Model No. 5496) with a 4" stroke. Accessorizing this unit is a Lead Screw Piloted Slot Spindle, Inline Shaft Drive, 4-Step "B" Section Pulley, a 1.55 HP (1110 RPM) Demag Motor, mounted to the left side on an Extended Belt Housing.



# LEAD SCREW TAPPING UNIT



**Models 5696, 5697, 5698**

## Specifications (Unit: inch)

Model No.	Thrust Adv./Ret.	Stroke	Screw Length	Max. Spindle Speed	Min. Spindle Speed	Pitches Avail.	Rapid Travel (Hyd)
5696	N/A	6"	2" of total	2000	80	Std/Metric	Yes
5697*	N/A	6"	2" of total	1000	80	Std/Metric	Yes
5698*	N/A	6"	4" of total	1000	80	Std/Metric	Yes

\*Note: For single spindle application add "ZZ" to "Special" column on order form.

## Customizing A Hause Unit To Your Specs

Most Hause power feed units can be customized to best fit the needs of your unique applications. Using the worksheet at the back of this catalog and the information found on pages 36 - 49, you can spec out the Hause unit of your choice.

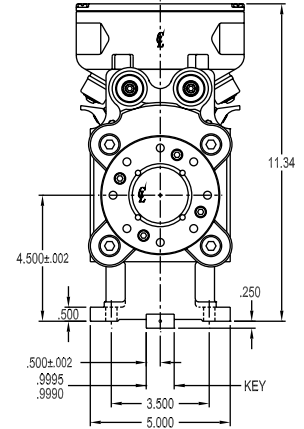
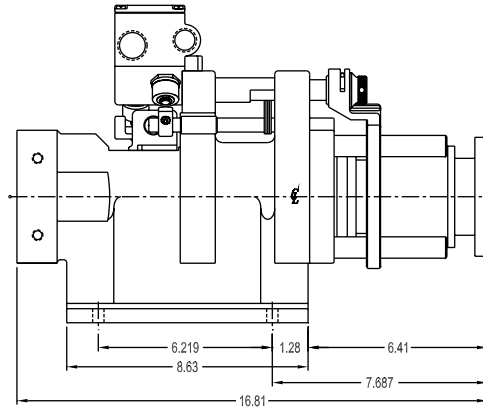
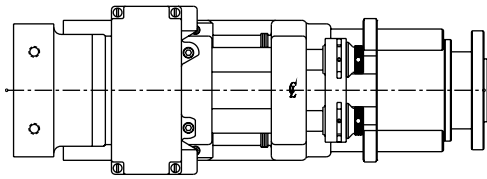
Model	Spindle	Drive	Belt/Pulley	Motor	Belt Housing	Special
5697	- AV	- R	- A	- AA	-	-
	Pgs. 36-37	Pgs. 38-39	Pgs. 40-41	Pgs. 42-44	Pg. 45	Pgs. 46-49

**Example: 5697-AV-R-A-AA** This code specifies a Lead Screw Tapping unit (Model No. 5697) with a 6" stroke. Accessorizing this unit is a High Torque Lead Screw #4 Morse Taper Spindle, 19mm Direct Drive, 5-Step "3V" Section Pulley, and a .97 HP (1090 RPM) Demag Motor.

## Features

- Rapid travel before lead screw engagement of work piece.
- Interchangeable lead screws and nuts.
- Depth repeatability of 1/8th revolution @ 1000 rpm's.
- Full adjustability for rapid and feed distances.
- Pulley and RPM choices.
- Belt housing/position choices.
- Various spindle and drive choices.

# LEAD SCREW TAPPING UNIT



## Models 7204, 7205

### Specifications (Unit: inch)

Model No.	Thrust	Stroke	Screw Length	Max. Spindle Speed	Min. Spindle Speed	Pitches Avail.	Rapid Travel
7204	N/A	2"	2"	2000	80	Std/Metric	No
7205*	N/A	2"	2"	1000	80	Std/Metric	No

\*Note: For single spindle application add "ZZ" to "Special" column on order form.

Other lead screw models are available in 4" stroke configurations. Contact Hause Machines or your local representative for details.

### Features

- "No hole" safety switch.
- Interchangeable lead screws and nuts.
- Depth repeatability of 1/8th revolution @ 1000 rpm's.
- Pulley and RPM choices.
- Belt housing/position choices.
- Various spindle and drive choices.

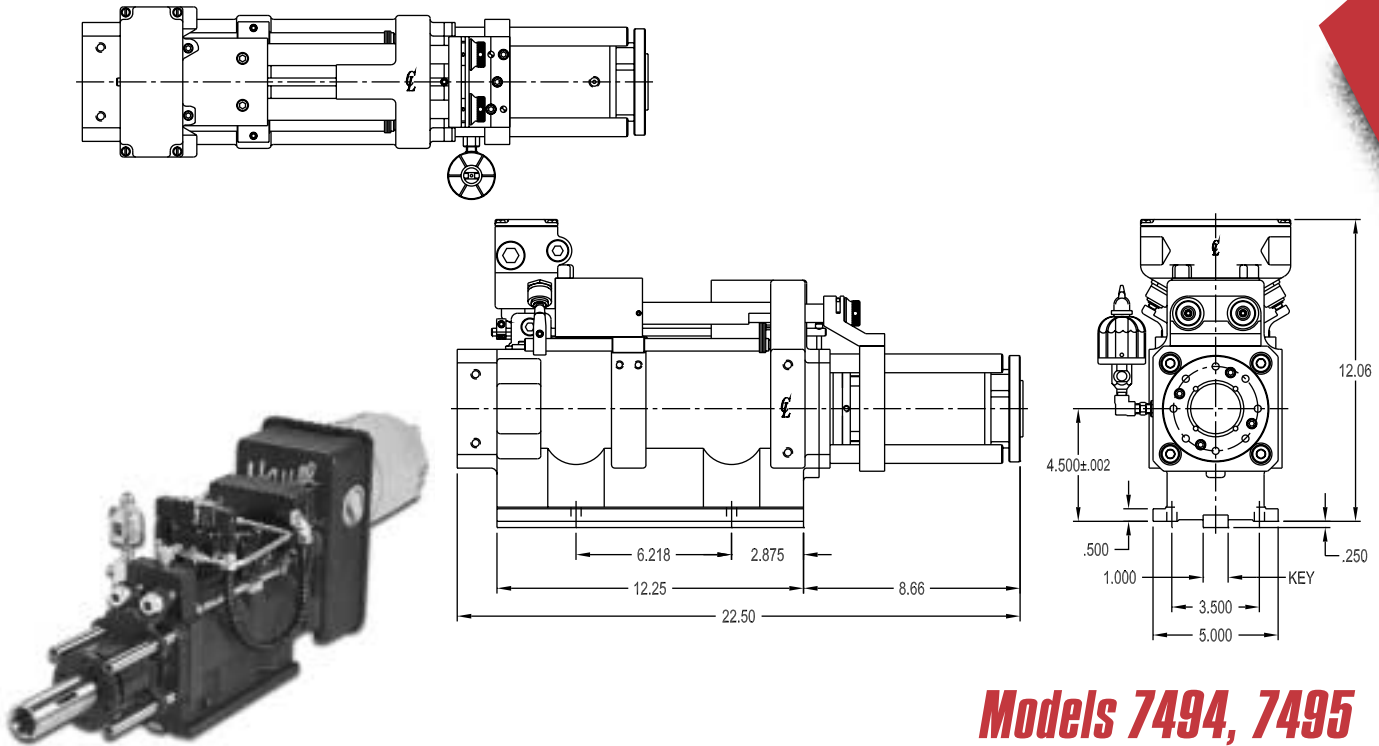
### Customizing A Hause Unit To Your Specs

Most Hause power feed units can be customized to best fit the needs of your unique applications. Using the worksheet at the back of this catalog and the information found on pages 36 - 49, you can spec out the Hause unit of your choice.

Model	Spindle	Drive	Belt/Pulley	Motor	Belt Housing	Special
7204	- BH	- A	- B	- BB	- C4	-
	Pgs. 36-37	Pgs. 38-39	Pgs. 40-41	Pgs. 42-44	Pg. 45	Pgs. 46-49

**Example: 7204-BH-A-B-BB-C4** This code specifies a Lead Screw Tapping unit (Model No. 7204) with a 2" stroke. Accessorizing this unit is a Quick Change 1-1/16" Adjustable Adapter Spindle, Inline Shaft Drive, 5-Step "B" Section Pulley, a 1.35 HP (1660 RPM) Demag Motor, mounted to the left side on an Extended Belt Housing.

# LEAD SCREW TAPPING UNIT



## Models 7494, 7495

### Specifications (Unit: inch)

Model No.	Thrust	Stroke	Screw Length	Max. Spindle Speed	Min. Spindle Speed	Pitches Avail.	Rapid Travel
7494	N/A	4"	4"	2000	80	Std/Metric	No
7495*	N/A	4"	4"	1000	80	Std/Metric	No

\*Note: For single spindle application add "ZZ" to "Special" column on order form.

Other lead screw models are available in 4" stroke configurations. Contact Hause Machines or your local representative for details.

### Features

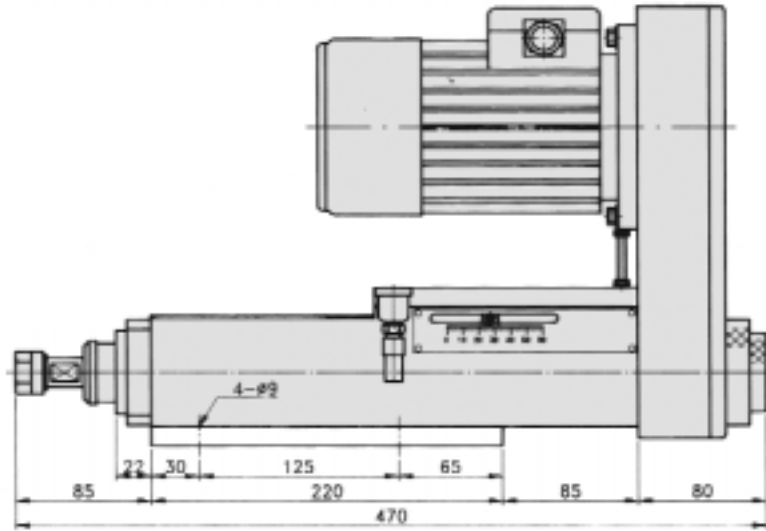
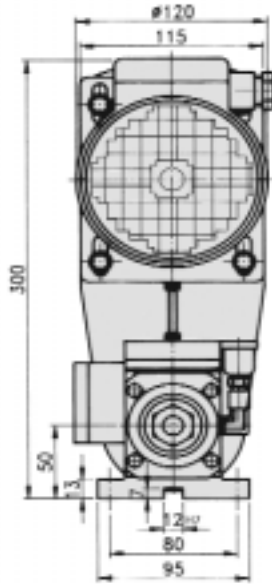
- "No hole" safety switch.
- Interchangeable lead screws and nuts.
- Depth repeatability of 1/8th revolution @ 1000 rpm's.
- Pulley and RPM choices.
- Belt housing/position choices.
- Various spindle and drive choices.

### Customizing A Hause Unit To Your Specs

Most Hause power feed units can be customized to best fit the needs of your unique applications. Using the worksheet at the back of this catalog and the information found on pages 36 - 49, you can spec out the Hause unit of your choice.

Model	Spindle	Drive	Belt/Pulley	Motor	Belt Housing	Special
7494	- BE	- A	- A	- BB	- B1	-
	Pgs. 36-37	Pgs. 38-39	Pgs. 40-41	Pgs. 42-44	Pg. 45	Pgs. 46-49

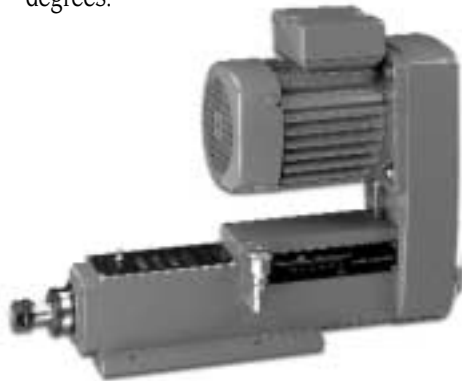
**Example: 7494-BE-A-A-BB-B1** This code specifies a Lead Screw Tapping unit (Model No. 7494) with 4" of lead screw stroke. Accessorizing this unit is a 1-1/16" Adjustable Adapter Spindle, Inline Shaft Drive, 5-Step Pulleys, and a 1.35 HP Demag Motor, mounted behind the unit on a Small Extended Belt Housing.



## Model F2N-60

### Features

- The unit is equipped with high precision, lead screw and nut.
- Thread pitch should be given when ordering.
- Lead screw is mounted internally to the unit body.
- Torque protection device is included for reducing tap damage.
- Motor and pulley set can be mounted around the circle with interval of 45 degrees.



### Specifications (Unit: metric)

<b>Tapping Capacity</b>	1/4" (steel)
<b>Chuck Capacity</b>	ER16-3/8", JT1-1/4"
<b>Power</b>	0.5HP-2P, 4P 220V/440V-60HZ
<b>Stroke</b>	2"
<b>Max.RPM</b>	1,800RPM
<b>Weight</b>	44 lb
<b>Thread Pitch</b>	100UNF ~ 24UNF
<b>Screw Lubrication</b>	Grease
<b>Transmission</b>	V-belt, H.T.D.-5M

### Consumption Parts

<b>Spindle Bearing</b>	NKX 17ZB x 2
<b>Pulley Bearings</b>	6003ZZx1, 6203ZZx1

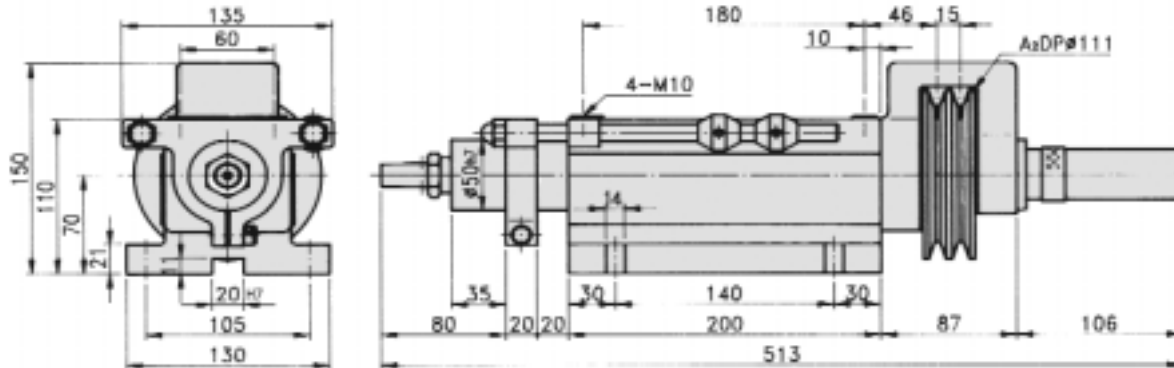
### Spindle Options

(See page 53 for drawings and dimensions)

ER16 Pg. 53

JT1 Pg. 53

# TAPPING UNIT



## Model F6N-60

### Specifications (Unit: metric)

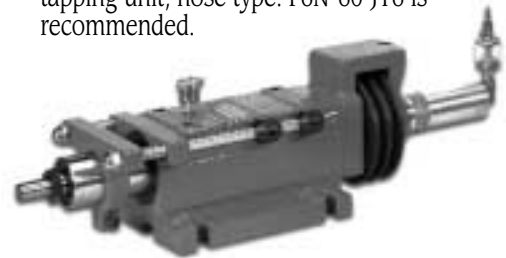
<b>Tapping Capacity</b>	1/2" (steel)
<b>Stroke</b>	2.5"
<b>Thread Pitch</b>	64UNF ~ 16UNF
<b>Screw Lubrication</b>	Grease
<b>Weight</b>	40 lb

### Consumption Parts

<b>Spindle Bearing</b>	6004Zx2
<b>Pulley Bearings</b>	60062RSx2, 6906ZZx1

### Features

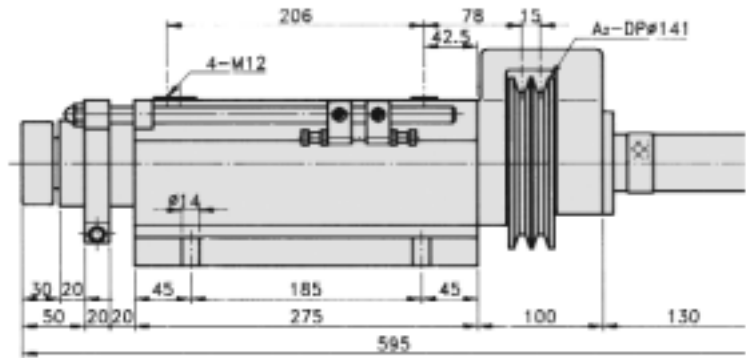
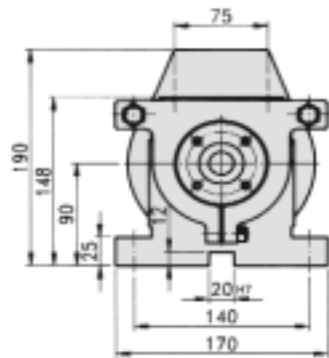
- The unit is equipped with high precision, lead screw and nut.
- Thread pitch should be given when ordering.
- Lead screw is mounted externally to the end of unit for easy and quick change.
- Horizontal and vertical application are available, oil cup should be adjusted accordingly.
- For mounting multiple spindle to this tapping unit, nose type: F6N-60-JT6 is recommended.



### Spindle Options

(See page 53 for drawings and dimensions)

<b>JT6</b>	<b>Pg. 53</b>
<b>ER20</b>	<b>Pg. 53</b>
<b>AS22</b>	<b>Pg. 53</b>



## Model F7N-80

### Features

- The unit is equipped with high precision, lead screw and nut.
- Thread pitch should be given when ordering.
- Lead screw is mounted externally to the end of unit for easy and quick change.
- Horizontal and vertical application are available, oil cup should be adjusted accordingly.
- For mounting multiple spindle to this tapping unit, we recommend nose type: F7N-80-MT3B.



### Spindle Options

(See page 53-54 for drawings and dimensions)

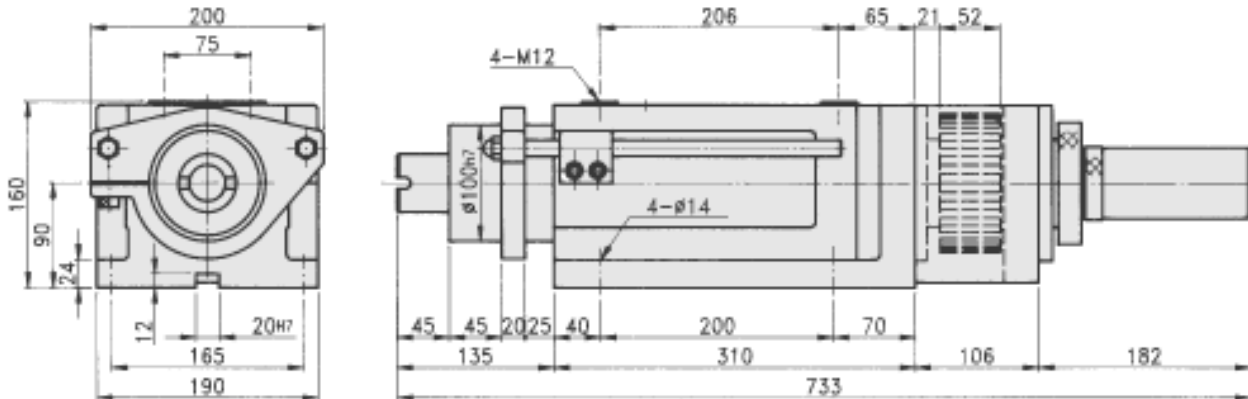
AS32	Pg. 53
MT3B Multi	Pg. 53
NT40	Pg. 53
FB20	Pg. 54

### Specifications (Unit: metric)

Tapping Capacity	1 1/4" (steel)
Stroke	3"
Thread Pitch	36UNF ~ 10UNC
Screw Lubrication	Grease
Weight	90 lb
Transmission	a. A2-O.D-6" b. B2-O.D-6" c. H.T.D.-8M-58T d. RS40x2-35T

### Consumption Parts

Spindle Bearing	6008Zx3
Pulley Bearings	6010Zx2, 6010LLx1
O-Ring for Spindle	TC-45, 68, 12



## Model F8N-90

### Specifications (Unit: metric)

<b>Tapping Capacity</b>	2" (steel)
<b>Stroke</b>	3.5"
<b>Thread Pitch</b>	24UNC ~ 8UNC
<b>Screw Lubrication</b>	Grease
<b>Weight</b>	145 lb
<b>Transmission</b>	a. RS40x2-30T b. H.T.D-8M-48T

### Consumption Parts

<b>Spindle Bearing</b>	6210Zx3
<b>Pulley Bearings</b>	6212Zx1, 6212ZZx1
<b>O-Ring for Spindle</b>	TC-60, 90, 11

### Features

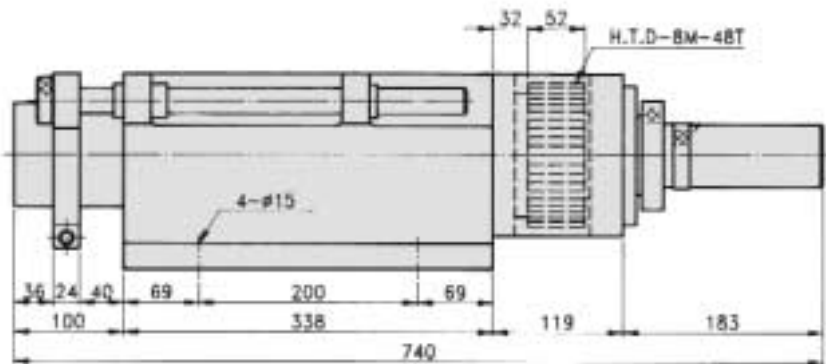
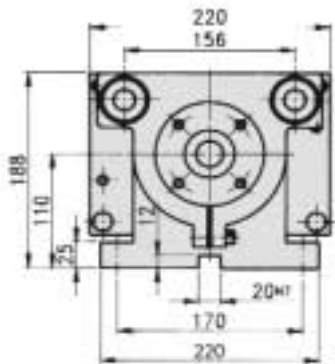
- The unit is mounted with high precision, grinding master gauge, suitable for accurate tapping works.
- Thread pitch should be given when ordering.
- Lead screw is mounted externally to the end of unit for easy and quick change.
- This unit can be mounted horizontally or vertically, oil cup should be adjusted accordingly.
- To increase life of lead screw, installation of tension spring for vertical application is recommended.



### Spindle Options

(See page 54 for drawings and dimensions)

<b>MT4B Multi</b>	<b>Pg. 54</b>
<b>AS36</b>	<b>Pg. 54</b>
<b>FB30</b>	<b>Pg. 54</b>



## Model F85N-90

### Features

- The unit is equipped with high precision, lead screw and nut.
- Thread pitch should be given when ordering.
- Lead screw is mounted externally to the end of unit for easy and quick change.
- This unit can be mounted horizontally or vertically, oil cup should be adjusted accordingly.
- To increase life of lead screw, installation of tension spring for vertical application is recommended.



### Spindle Options

(See page 54 for drawings and dimensions)

FB30

Pg. 54

### Specifications (Unit: metric)

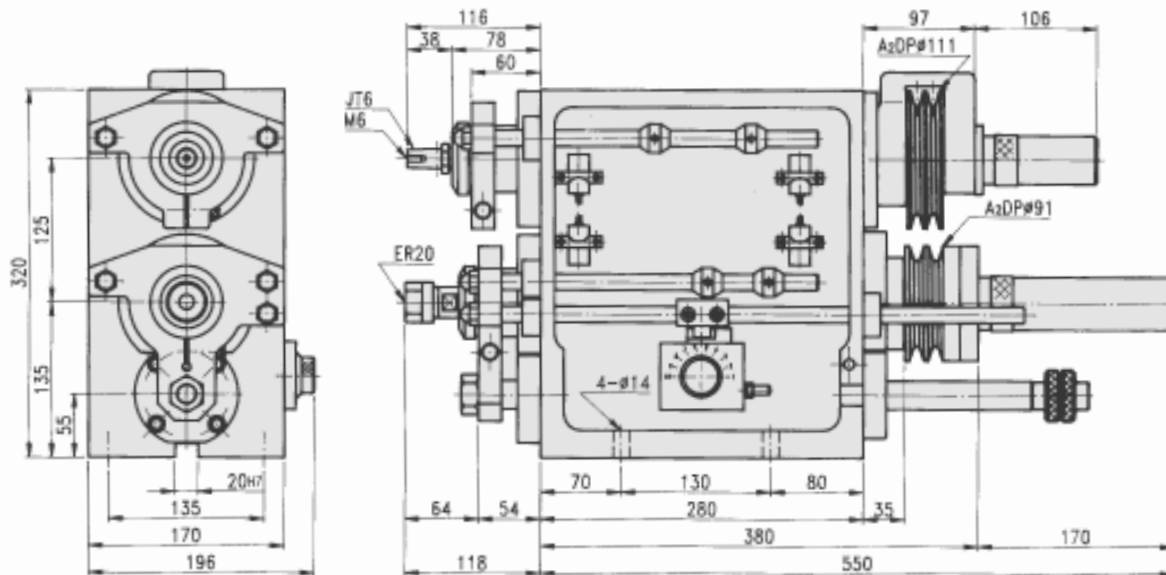
<b>Tapping Capacity</b>	2" (steel)
<b>Stroke</b>	3.5"
<b>Thread Pitch</b>	24UNC ~ 8UNC
<b>Screw Lubrication</b>	Grease
<b>Weight</b>	196 lb
<b>Transmission</b>	a. RS40x2-30T b. H.T.D-8M-48T c. RS50x3-26T

### Consumption Parts

<b>Spindle Bearing</b>	6010Zx4
<b>Pulley Bearings</b>	6212Zx1, 6212ZZx1
<b>O-Ring for Spindle</b>	TC-60, 90, 11



# DRILL-TAPPING UNIT



## Model FTD63-120/80

### Specifications (Unit: metric)

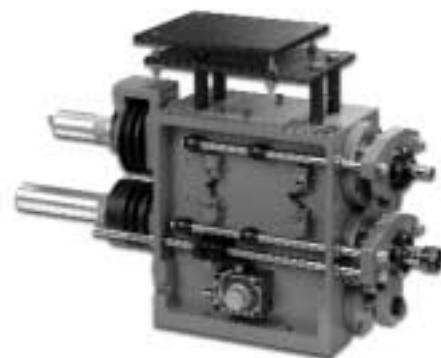
	Drilling Section	Tapping Section
Hydraulic Pressure	350 ~ 490 P.S.I.	
Drilling Capacity	5/8" (steel)	1/2" (steel)
Stroke	4.7"	3"
Max. Revolution/Minute	3,000RPM	
Flow Control Valve	FCC-GO2-4	
Weight	145 lb	
Cylinder Diameter	2"	
Cylinder Area	2.28 IN <sup>2</sup>	
Thrust Force	810 lb @ 350 P.S.I.	
Transmission	a. A2-O.D-4" b. H.T.D-5M-62T	a. A2-O.D-4.8" b. H.T.D-5M-76T
Thread Pitch	64UNF~16UNC	

### Consumption Parts

	Drilling Section	Tapping Section
O-Ring for Front Cover	UHS-58	UHS-58
O-Ring for Piston	P-40x2, P25x2	
O-Ring for Rear Cover	P30-2, G75-1	
Spindle Bearing	32005x1, 6005Zx1 32004x1, 6004Zx1	6005Zx2, 6004Zx2
Pulley Bearings	6008Zx1, 51208x1	60062RSx2, 6906ZZx1

### Features

- Drill and tap spindle at the same station.
- Drill up to 5/8" in mild steel (4.7" total stroke)
- Tap up to 1/2" in mild steel (3" total stroke)
- Lead screw pitch changes from the rear. (Standard or Metric)



### Spindle Options

(See page 51 for drawings and dimensions)

ER20 Pg. 51

JT6\* Pg. 51

AS22 Pg. 51

MT3 Pg. 51

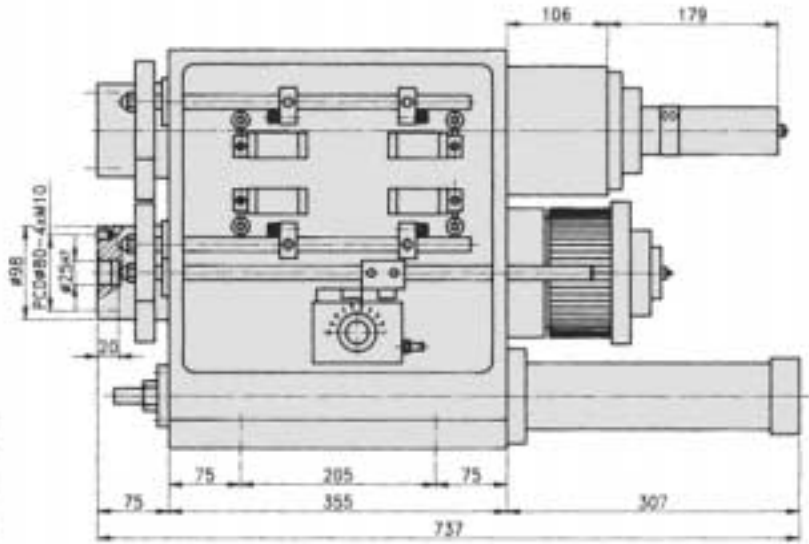
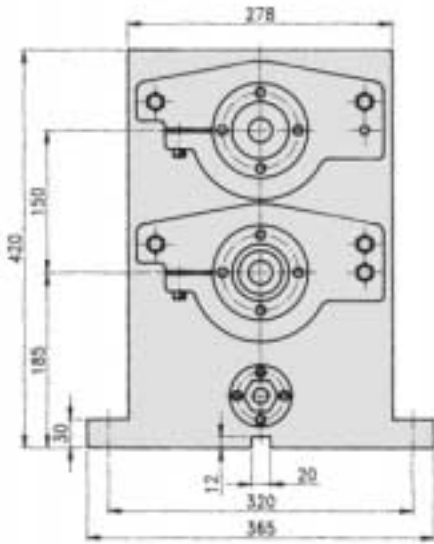
ER25 Pg. 51

JT6 Multi Pg. 51

MT2 Pg. 51

\*Tapping spindle - JT6 only

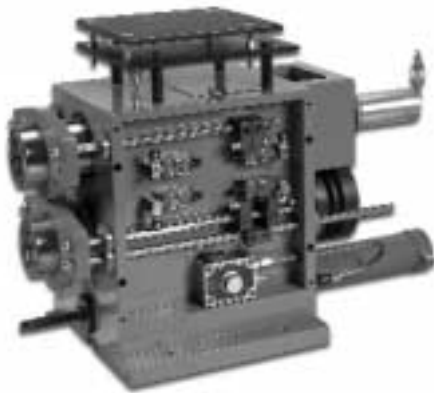
Any questions or to place an order, contact:  
 Hausé Machines, Inc • 809 S. Pleasant St. • Montpelier, OH 43543  
 800-932-8665 • 419-485-3158 • Fax 419-485-3146  
 www.hausemachines.com



## Model FTD9-150/90

### Features

- Drill and tap spindle at the same station.
- Drill up to 1-3/8" in mild steel (6" total stroke)
- Tap up to 2" in mild steel (3.5" total stroke)
- Lead screw pitch changes from the rear. (Standard or Metric)



### Spindle Options

(See page 54 for drawings and dimensions)

**Drilling Spindle - Flange Only FB45 Pg. 54**

**Tapping Spindle - Flange Only FB45 Pg. 54**

### Specifications (Unit: metric)

	Drilling Section	Tapping Section
<b>Hydraulic Pressure</b>	280 ~ 350 P.S.I.	
<b>Drilling Capacity</b>	1 3/8" (steel)	2" (steel)
<b>Stroke</b>	6"	3.5"
<b>Max. Revolution/Minute</b>	2,000RPM	
<b>Flow Control Valve</b>	FCC-GO3-8	
<b>Weight</b>	510 lb	
<b>Cylinder Diameter</b>	2.5"	
<b>Cylinder Area</b>	4.84 IN <sup>2</sup>	
<b>Thrust Force</b>	2060 lb @ 420 P.S.I.	
<b>Transmission</b>	a. B2-00.D-6" b. H.T.D-8M-56T	a. RS40-30T b. H.T.D-8M-48T
<b>Thread Pitch</b>	24UNC-8UNC	

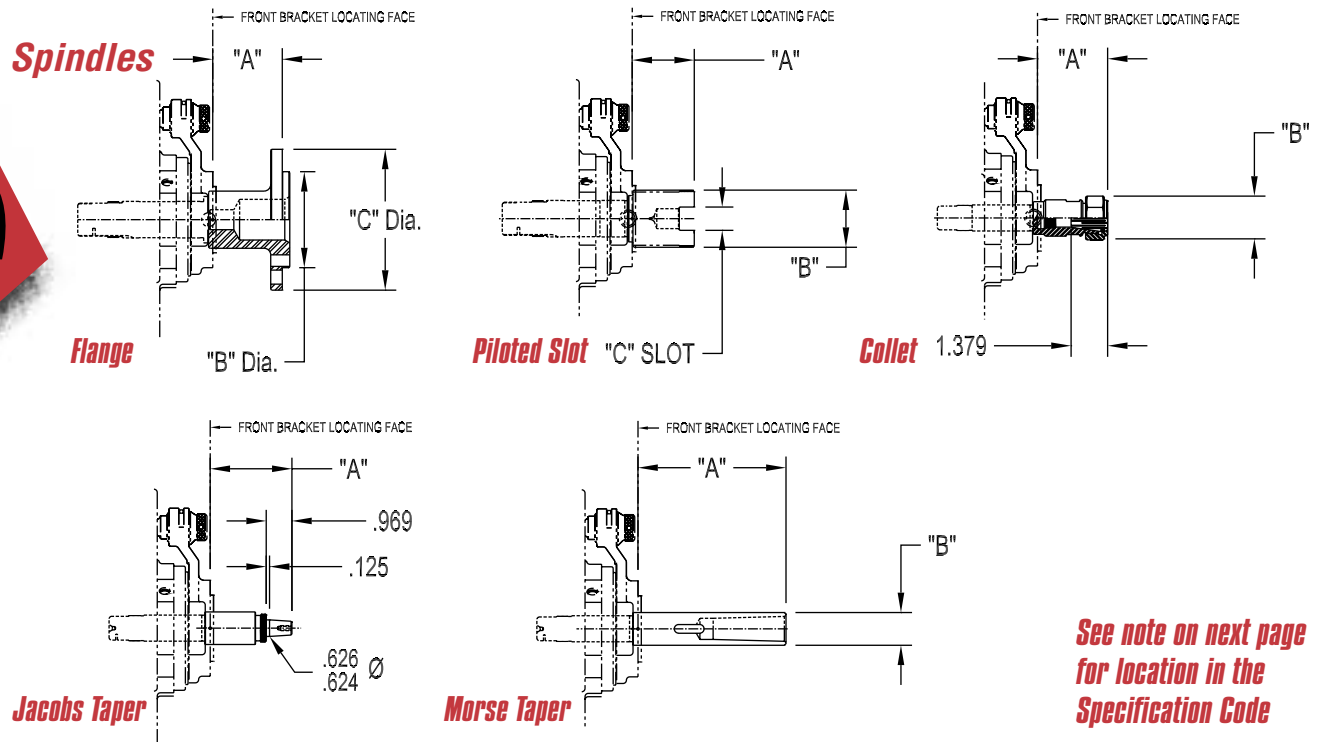
### Consumption Parts

	Drilling Section	Tapping Section
<b>O-Ring for Front Cover</b>	P-90x2, G-115x3, DH-100x1	
<b>O-Ring for Piston</b>	P-100x2, G-65x1	
<b>O-Ring for Rear Cover</b>	P-55x2, G-105x1	
<b>Spindle Bearing</b>	33010x1, 32008x1 6010Zx1, 6008Zx1	6010Zx4
<b>Pulley Bearings</b>	6013Zx1, 51213x1	6212Z-1

Any questions or to place an order, contact:  
 Hausé Machines, Inc • 809 S. Pleasant St. • Montpelier, OH 43543  
 800-932-8665 • 419-485-3158 • Fax 419-485-3146  
 www.hausemachines.com



# CUSTOM ADD-ONS FOR ENGLISH UNITS

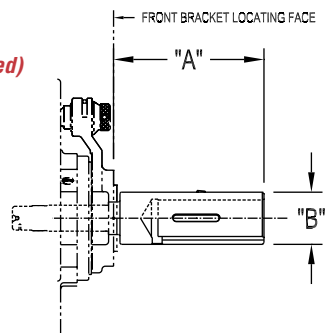


See note on next page  
for location in the  
Specification Code

Catalog No.	Description	"A"	"B"	"C"
AA	Flange	2.625	3.619/3.621	5.313
AB	Piloted Slot	2.3125	2.150/2.160	
AC	Piloted Slot - Lead Screw			
AD	Piloted Slot - High Torque			
AE	Piloted Slot High Torque - Lead Screw	2.75	2.250/2.230	
AF	#25 ER Collet Socket	2.656	1.625	
AG	#32 ER Collet Socket			
AH	#33 Jacobs Taper	1.594	1.594	
AI	#33 Jacobs Taper Extended	3.094	3.094	
AJ	#33 Jacobs Taper Extra Long	5.281	5.281	
AK	#2 Morse Taper	3.562	1.235/1.230	
AL	#2 Morse Taper Extended	5.344	1.235/1.230	
AM	#2 Morse Taper Quill Support			
AN	#2 Morse Taper High Speed			
AO	#2 Morse Taper Series "A"	5.688	1.9684/1.9689	
AP	#2 Morse Taper Series "A" Extended	7.688	1.9684/1.9689	
AQ	#3 Morse Taper	6.562	1.2347/1.2350	
AR	#3 Morse Taper High Torque	6.188	2.1653/2.1659	
AS	#3 Morse Taper High Torque Extended	7.812	2.1653/2.1659	
AT	#4 Morse Taper	5.688	1.9684/1.9689	
AU	#4 Morse Taper Extended	7.688	1.9684/1.9689	
AV	#4 Morse Taper High Torque	7.812	2.1653/2.1659	
AW	#4 Morse Taper Lead Screw	5.688	1.870/1.875	

Note: HT spindles are only available for hydraulic, all HT lead screw units and 87XX series ballscrew units.

## Spindles (Continued)



**Adjustable Adapter**

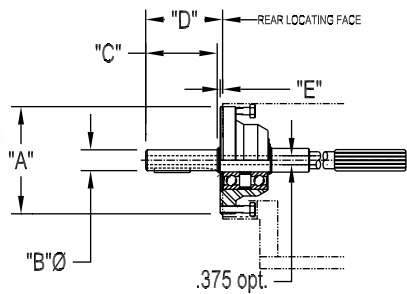
### Note: Location in the Specification Code

Model Spindle Drive Belt/Pulley Motor Belt Housing Special  
 X X XX \_\_\_\_\_ X X XX XX XX XX

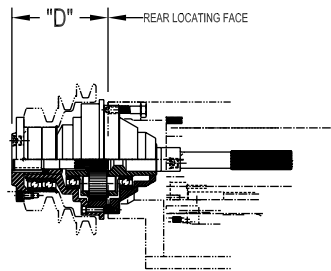
Catalog No.	Description	"A"	"B"
AY	3/4" Adjustable Adapter, 3/4" A.A.L.S. & 7/8" A.A.L.S.	3.469	1.230/1.235
AZ	3/4" Adjustable Adapter - Extra Long		
BA	1" Adjustable Adapter	4.094	1.595/1.600
BB	1" Adjustable Adapter - Short	3.094	1.595/1.600
BC	1" Adjustable Adapter - Extra Long With 4"	5.688	1.9684/1.9689
BD	1" Adjustable Adapter - Extra Long With 6"	7.688	1.9684/1.9689
BE	1-1/16" Adjustable Adapter	4.094	1.595/1.600
BF	1-1/16" Adjustable Adapter - Extra Long	5.688	1.9684/1.9689
BG	1-1/16" Adjustable Adapter - Quick Change	4.938	1.6090/1.6095
BH	1-1/16" Adjustable Adapter - Quick Change	8.156	1.6090/1.6095
BI	1-1/4" Adjustable Adapter	5.688	1.9684/1.9689
BJ	1-3/8" Adjustable Adapter - Quick Change	4.938	1.9840/1.9845
BK	1-3/8" Adjustable Adapter	5.688	1.9840/1.9845
BL	1-3/8" Adjustable Adapter - Extra Long	7.688	1.9840/1.9845
BM	1-3/8" Adjustable Adapter - High Torque	7.313	2.1653/2.1659
BN	1-3/8" Adjustable Adapter - High Torque Extra Long	8.938	2.1653/2.1659
BO	1-1/2" Adjustable Adapter	5.688	1.9684/1.9689
BP	1-1/2" Adjustable Adapter - Extra Long	7.688	1.9840/1.9845
BQ	1-1/2" Adjustable Adapter - High Torque	6.188	2.1653/2.1659
BR	1-7/8" Adjustable Adapter - High Torque	6.188	2.6245/2.6255
BS	1-7/8" Adjustable Adapter - Extra Long	7.188	1.9840/1.9845
BT	1-7/8" Adjustable Adapter - High Torque Lead Screw	6.563	2.625
SP	Special		

Note: HT spindles are only available for hydraulic, all HT lead screw units and 87XX series ballscrew units.

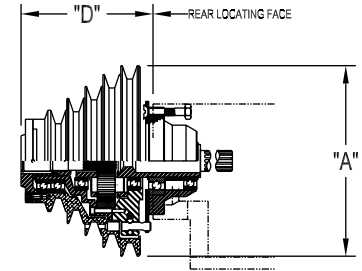
## Drives



**Inline Drive**



**Planetary Reduction**



**Hi-Lo**

**See note on next page  
for location in the  
Specification Code**

Catalog No.	Description	"A"	"B"	"C"	"D"	"E"
A	Inline Shaft Drive	5.000	.8740/.8745	3.000	3.250	0.125
B	High Torque	5.000	1.3740/1.3745	3.438	3.688	0.250
C	Coolant Through	5.000	1.3740/1.3745	3.438	3.688	0.250
D	Draw Bar	5.000	1.3740/1.3745	3.438	3.688	0.250
E	Draw Bar With Grease Port	5.000	1.3740/1.3745	3.438	3.688	0.250
F	Planetary Reduction 6:1	6.250			3.688	
G	Planetary Reduction - High Torque	6.250			3.688	
H	Coolant Through	6.250			3.688	
I	Hi-Lo Reduction - Standard	8.000			5.500	
J	Hi-Lo Reduction - High Torque	8.000			5.500	

**Note: If an HT spindle has been selected, choose an HT drive. HT drive is also required for coolant through or draw bar applications. (Spindle choices: AE, AR, AS, AV, BM, BN, BQ, BT).**