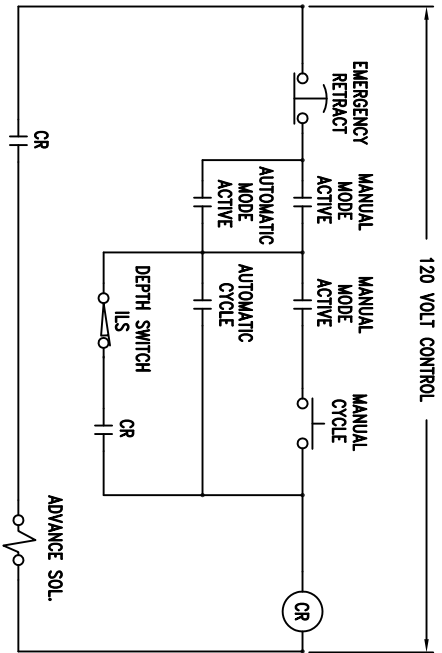
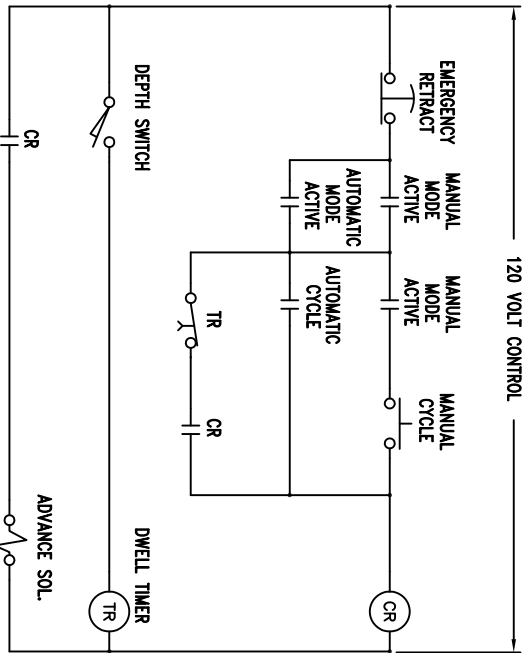


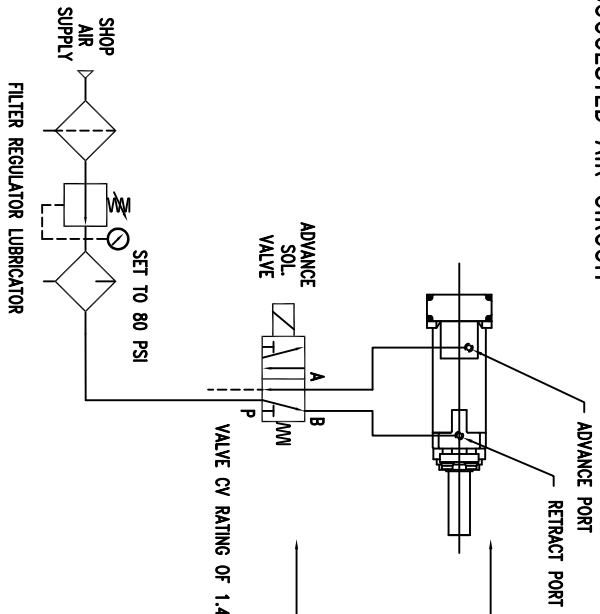
TYPICAL UNIT ELECTRICAL CONTROL



TYPICAL UNIT ELECTRICAL CONTROL WITH DWELL TIMER



SUGGESTED AIR CIRCUIT



REFERENCE MODEL NUMBERS
 SERIES "J" 2" STROKE #2292, #2293
 SERIES "A" 4" STROKE #2496, #2497
 SERIES "A" 6" STROKE #2696, #2697
 SERIES "A" 10" STROKE #2196, #2197

RECOMMENDED VALVES
 * ARO #A-212-SS-120-A
 * NUMATIC #0825A432-0
 * NUMATIC #1525A432-0
 * MAC #8111C-PM-591-JB-152 24VDC
 * MAC #8111C-PM-1111-JB-152 120VAC

- SAFETY NOTES---
- 1) BE SURE POWER IS (OFF) AND (LOCKED OUT) BEFORE PERFORMING ANY MACHINE MAINTENANCE OR ANY TYPE OF MACHINE CLEAN-UP.
 - 2) MACHINE MUST BE CONNECTED TO BUILDING ELECTRICAL SAFETY GROUND.
 - 3) SHUT OFF, DISCONNECT AND BLEED OFF TO ATMOSPHERE ANY RESIDUAL AIR PRESSURE BEFORE SERVICING HOLOMATIC.
 - 4) MAINTAIN PROPER OIL LEVELS AND GRADES IN HOLOMATIC AT ALL TIMES.
 - 5) MAINTAIN CLEAN DRY LUBRICATED AIR IN HOLOMATIC AT ALL TIMES.
 - 6) DO NOT TOUCH HEATED SURFACES OR ANY ROTATING OR SLIDING PARTS OF HOLOMATIC.
 - 7) GUARD TOOL IN SPINDLE WHENEVER POSSIBLE TO SUIT APPLICATION.

CODE	QTY.	PART #.	DESCRIPTION
------	------	---------	-------------

PLOT DATE: 08/05/2009, 15:29 JBH

THIS DRAWING IS THE PROPERTY OF HAUSE MACHINES INC. AND IS RETURNABLE ON REQUEST. IT IS NOT BE USED IN ANY MANNER DETRIMENTAL TO HAUSE MACHINES INCORPORATED.

DATE	BY	CHKD	APP'D
2/29	7/93	NONE	CHESB

HAUSE MACHINES INC. 22739-00, 22740-00

HAUSE MACHINES INC. 22751-1