

SPINDLE BELT/PULLEY ASSEMBLIES
 POLY VEE STYLE 6900 RPM
 POLY VEE STYLE 5175 RPM
 POLY VEE STYLE 4882 RPM
 POLY VEE STYLE 4298 RPM
 POLY VEE STYLE 10,350 RPM
 OTHERS-SPECIFY

BELT HOUSINGS
 EXTENDED
 SIDE MOUNT SPINDLE MOTOR

FEED BELT AND PULLEY ASSEMBLIES
 1:1.75 RED
 1:1.75 INC
 1:1
 1:1.647 RED

SERVO MOTORS
 YASKAWA #SGM5H15A
 CSM #MPM-1141-FRMM-AM (SHOWN)
 OTHERS-SPECIFY

SPINDLE MOTOR (SERVO SHOWN)
 SERVO OR AC
 SPECIFY TYPE & MODEL

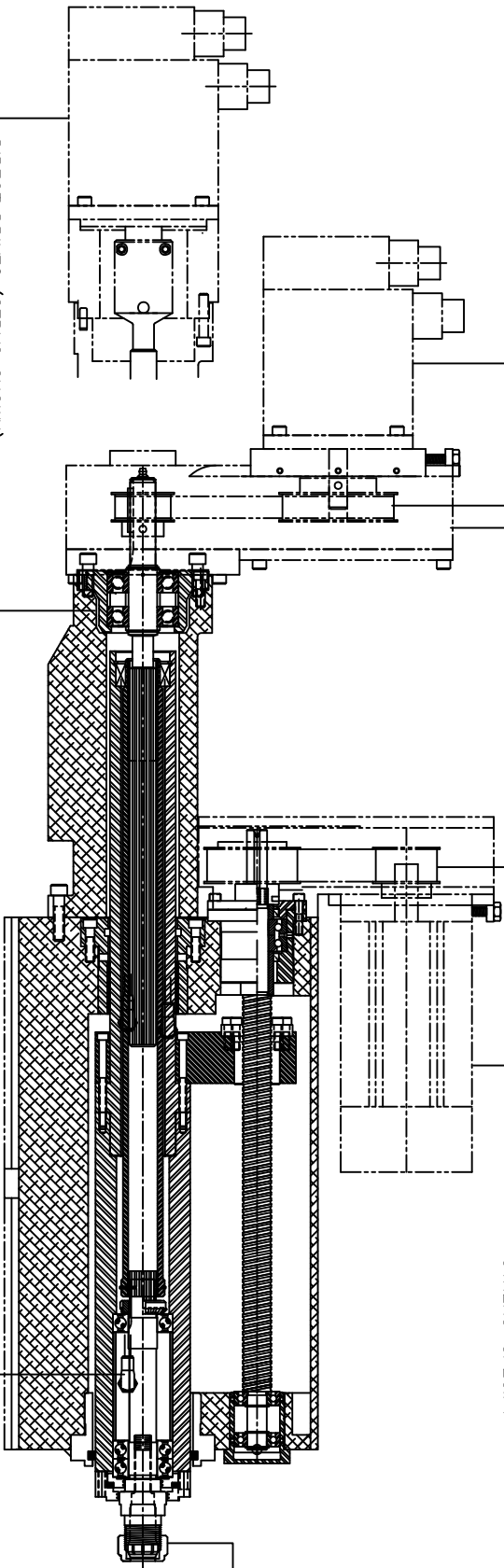
DIRECT DRIVES (SERVO SHOWN)

RIGHT ANGLE RED
 YASKAWA #SGMGH30A
 .875Ø SHAFT - 4-1/2 AK MOTOR
 1.125Ø SHAFT - 8-1/2 AK MOTOR
 1.375Ø SHAFY - 8-1/2 AK MOTOR
 38-35mm Ø- YASKAWA #SGMGH-44D
 OTHERS-SPECIFY

INLINE DRIVE ASSEMBLIES
 STANDARD DUTY
 HIGH SPEED .75HP MAX
 HIGH SPEED 3HP MAX
 HIGH SPEED APPLICATIONS
 HIGH TORQUE DRIVE

OVERTRAVEL SWITCH ASSEMBLIES
 PNP (SOURCING)
 NPN (SINKING)
 HARD WIRED (LAYOUT REQUIRED)

SPINDLE ASSEMBLIES
 1-3/8 QC AA
 1-1/16 QC AA
 D/A COLLET
 #200 KWK
 #40 NMTB
 D/A COLLET HIGH SPEED
 PILOTED SLOT
 #25 ER COLLET
 1-3/8 AA
 3/4 QC AA
 1-7/8 AA SUPPORTED



FILE		8100 SERIES BILL OF MATERIALS	
REMOVE ALL BARRS & BREAK ALL CORNERS AND ATTACHMENT LISTING			
DATE	SCALE	DATE	SCALE
09/22/09	1/2	09/22/09	1/2
DRAWN BY: JTB		CHECKED BY: JTB	
DATE: 12/22/08		DATE: 12/22/08	
PART NUMBER: 8100		PART NUMBER: 8100	

STAMP HAUSE PART NUMBER ON ALL PARTS
 REMOVE ALL BARRS & BREAK ALL CORNERS
 PILOT DATE: 09/22/2009; 16:22 JTB
 HAUSE MACHINES
 1725 W. STATE ST.
 COLUMBUS, OHIO 43260-1100
 USA