

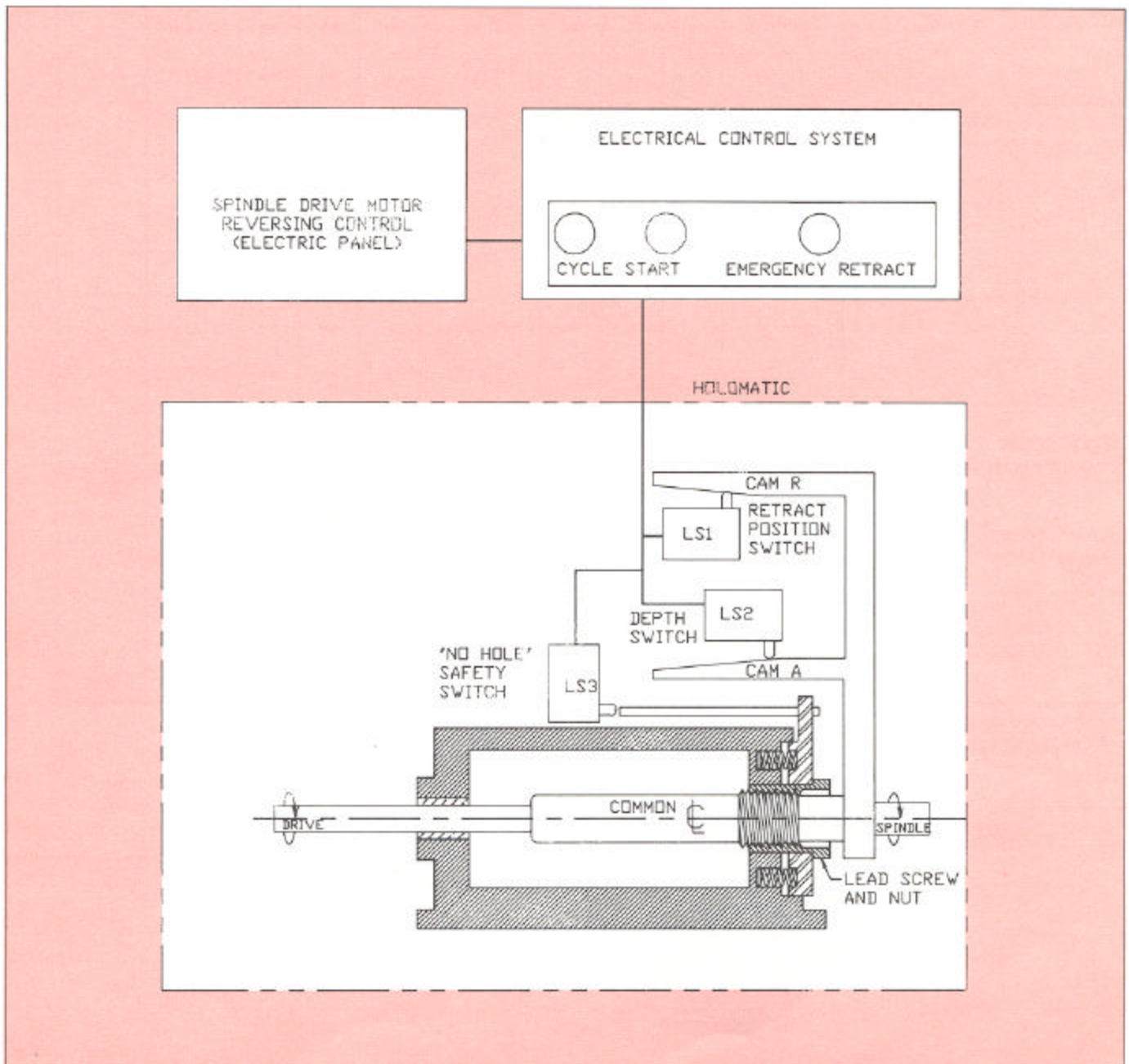
## Lead Screw Units, Series A7

Holomatic Lead Screw Power Feed Units utilize a Lead Screw and Nut to perform fast and accurate tapping and threading operations. The Lead Screw and Nut can be quickly changed when it becomes necessary to change tap or thread pitch. The Cycle Start Button starts the Motor

which drives the Spindle forward through the Lead Screw Nut.

Cams "A" & "R" advance forward with the Spindle. When the Depth Switch is released off of Cam "A", the Motor reverses and the Spindle retracts until Cam "R" actuates the Retract Position Switch which stops the Motor to complete the cycle.

If a "no-hole" or other obstruction occurs, the No-Hole Safety Switch actuates; which causes the Motor to reverse and return the Spindle to its retract position. An Emergency Retract Button can also be used to allow an operator to manually retract the Spindle by reversing the Motor.



## Lead Screw Systems

Capacity	Stroke Length	Lead Screw Feed	Rapid Travel-Hydraulic	Rapid Travel-Pneumatic	Rapid Travel Not Avail.	Torque - Lb.-In.	Motor Reverse	Threading Head	Mult. Spindle Head	Model	Series	New Models
<b>Standard</b> Capacity up to 600 Lbs.-in. Standard Torque Units  Up to 1"-8 Tap or Thread	2" 2"			x		600	x	xx	xx	7204	A7	
	4" 2"		x			600	x	xx	xx	3496	A3	
	4" 4"			x		600	x	xx	xx	7494	A7	
	4" 2"	x				600	x	xx	xx	5496	A5	
	6" 2"		x			600	x	xx	xx	3696	A3	
	6" 2"	x				600	x	xx	xx	5696	A5	
<b>High Torque</b> Capacity up to 3500 Lbs.-in. High Torque Units  Tap or Thread Over 1"-8	2" 2"			x		3500	x	xx	xx	7205	A7	
	4" 2"		x			3500	x	xx	xx	3497	A3	
	4" 4"			x		3500	x	xx	xx	7495	A7	
	4" 2"	x				3500	x	xx	xx	5497	A5	
	6" 2"		x			3500	x	xx	xx	3697	A3	
	6" 4"		x			3500	x	xx	xx	3698	A3	
	6" 2"	x				3500	x	xx	xx	5697	A5	
	6" 4"	x				3500	x	xx	xx	5698	A5	

x - Furnished on Unit Shown

xx - Optional Item



Model 7204 Shown

### Standard Features on All Models

- Motor Reverse Capability
- Switch Box and Control Switches