

809 S. Pleasant  
Montpelier, OH 43543  
419-485-3158  
419-485-3146 fax  
[www.hausemachines.com](http://www.hausemachines.com)





## COMPANY HISTORY

In 1933 Ralph Hause and A.C. Brammer formed a partnership and called it "Hause Valve Company" to manufacture valves used in underground oil well equipment. In the following ten-year period, the product line was expanded to include complete oil well pump assemblies with the trademark "Moroil".

After the death of A.C. Brammer in 1940, his son Eugene in 1942, and a fire which destroyed the plant in 1943, the manufacture of oil field equipment was discontinued. The plant was partially rebuilt and operated by Ralph Hause as a sole proprietorship, doing production machine work to order. The Hause Valve Company was incorporated in 1947 and continued to expand its facilities for production machine work.

Development of the present "Holomatic" product line was started in 1952 and a second company "Hause Machines, Inc." was organized in 1953 and incorporated in 1957 to market this equipment.

The term "Holomatic" is a registered trade name that identifies the patented power feed unit design principles. These units are used to drive a wide variety of end working tools in manufacturing. The capacity, range and versatility of this concept has made possible the development and sale of complete production machines.

After the death of Ralph Hause in 1976, Hause Machines, Inc. was owned and operated by eight shareholders. Because a number of these eight shareholders were approaching retirement, they decided to collectively sell their shares and put Hause Machines, Inc. under new ownership.

In July of 1987, James Smythe of Toledo acquired the majority interest in Hause Machines, Inc. After 18 years of ownership, Mr. Smythe decided to sell the machine tool business and devote more time to his security business.

In July of 2005, James Fruchey and Robert Brubaker, both existing employees of the company, purchased the assets of Hause Machines, Inc. Under the new ownership the company will continue to operate as Hause Machines to maintain the 74 year history of good quality products at a reasonable price.



SERVING THE METAL WORKING INDUSTRY SINCE 1933

## SPECIAL MACHINES DESIGNED PER APPLICATION

- SLIDE/SHUTTLE MACHINES
- DIAL INDEX MACHINES
- TRUNION MACHINES
- SINGLE STATION MACHINES



## BASIC MACHINES

- SINGLE END
- DOUBLE END
- HORIZONTAL
- VERTICAL
- AIR
- HYDRAULIC



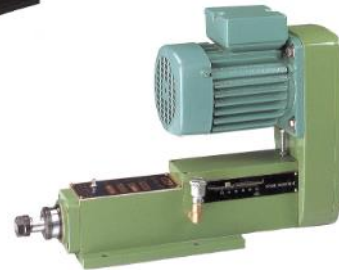
## DRILLING UNITS 2" TO 10" STROKES

- AIR-HYDRAULIC
- PNEUMATIC
- HYDRAULIC
- LEAD SCREW
- HYDRAULIC SERVO
- BALL SCREW SERVO



## TAPPING UNITS 2" TO 6" STROKES

- LEAD SCREW
- PNEUMATIC
- HYDRAULIC
- BALLSCREW



## INDEXERS

- VERTICAL
- HORIZONTAL
- HIGH ACCURACY—HIRTH COUPLED
- HYDRAULIC AND SERVO



## MULTIPLE SPINDLE HEADS

- FIXED CENTER
- ADJUSTABLE
- ECCENTRIC



## MACHINE COMPONENTS

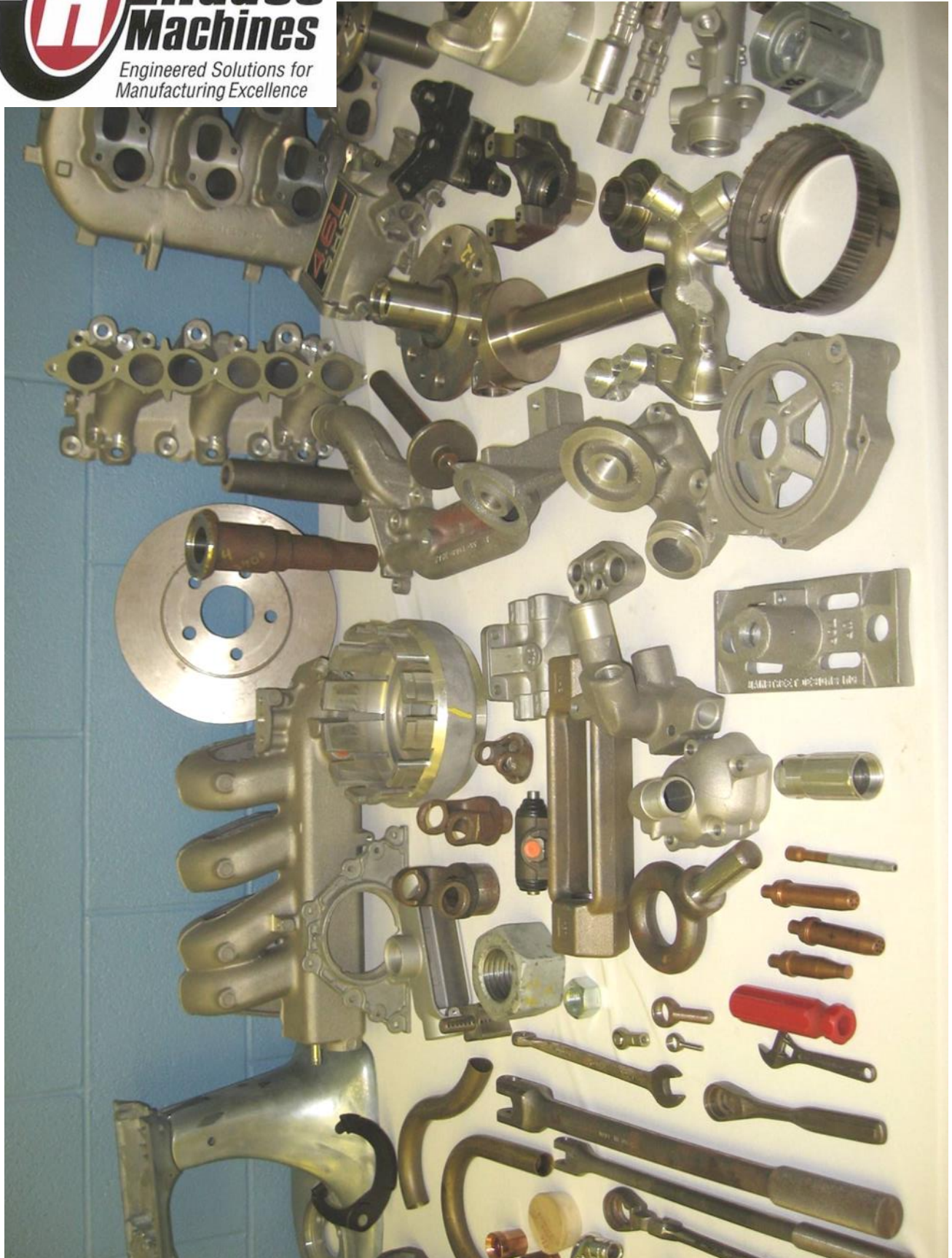
- BASES
- RISERS
- COLUMNS
- FIXTURES
- DIAL PLAES
- ENGINEERING / DESIGN
- CNC MACHINES TOOLED / UNTOOLED



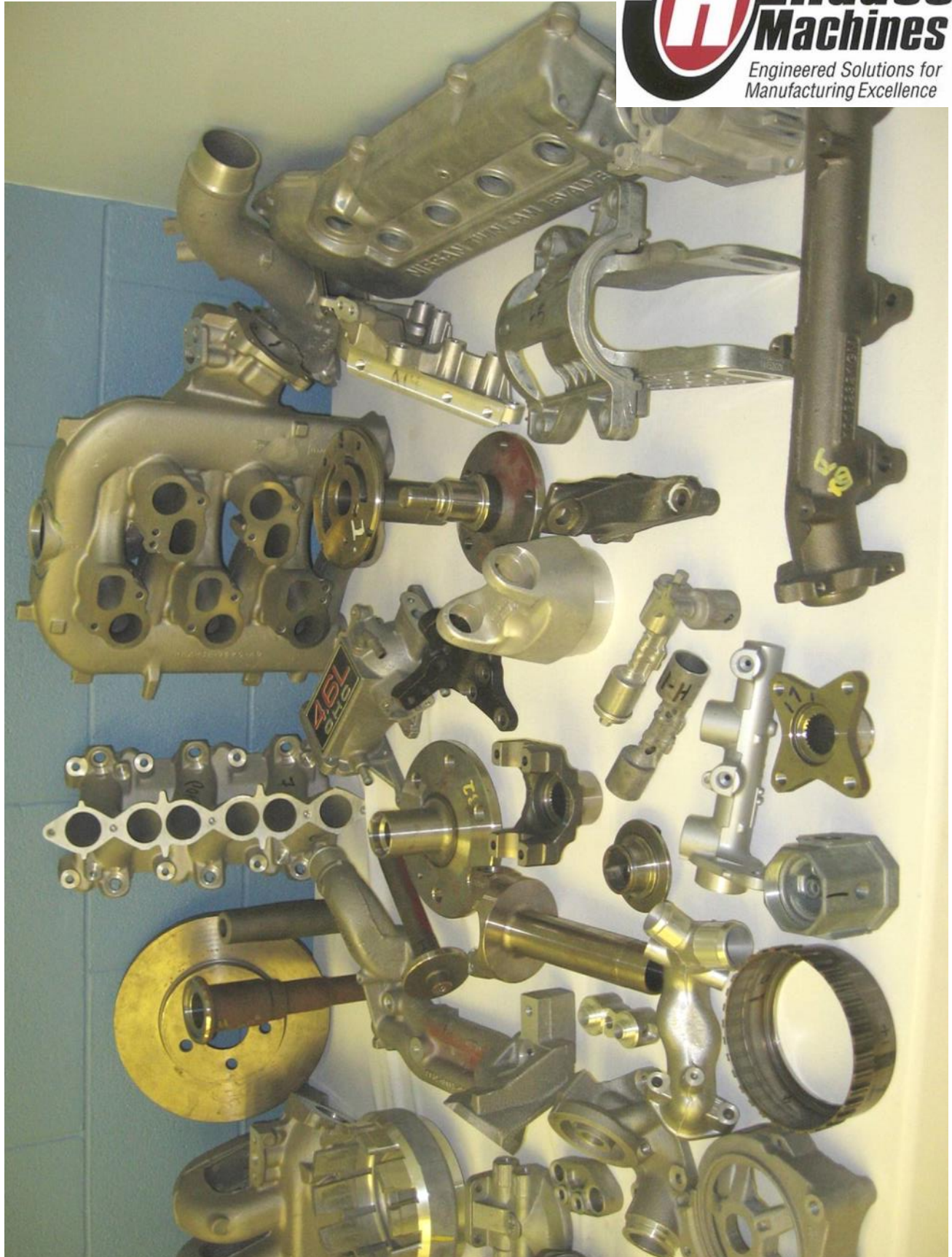




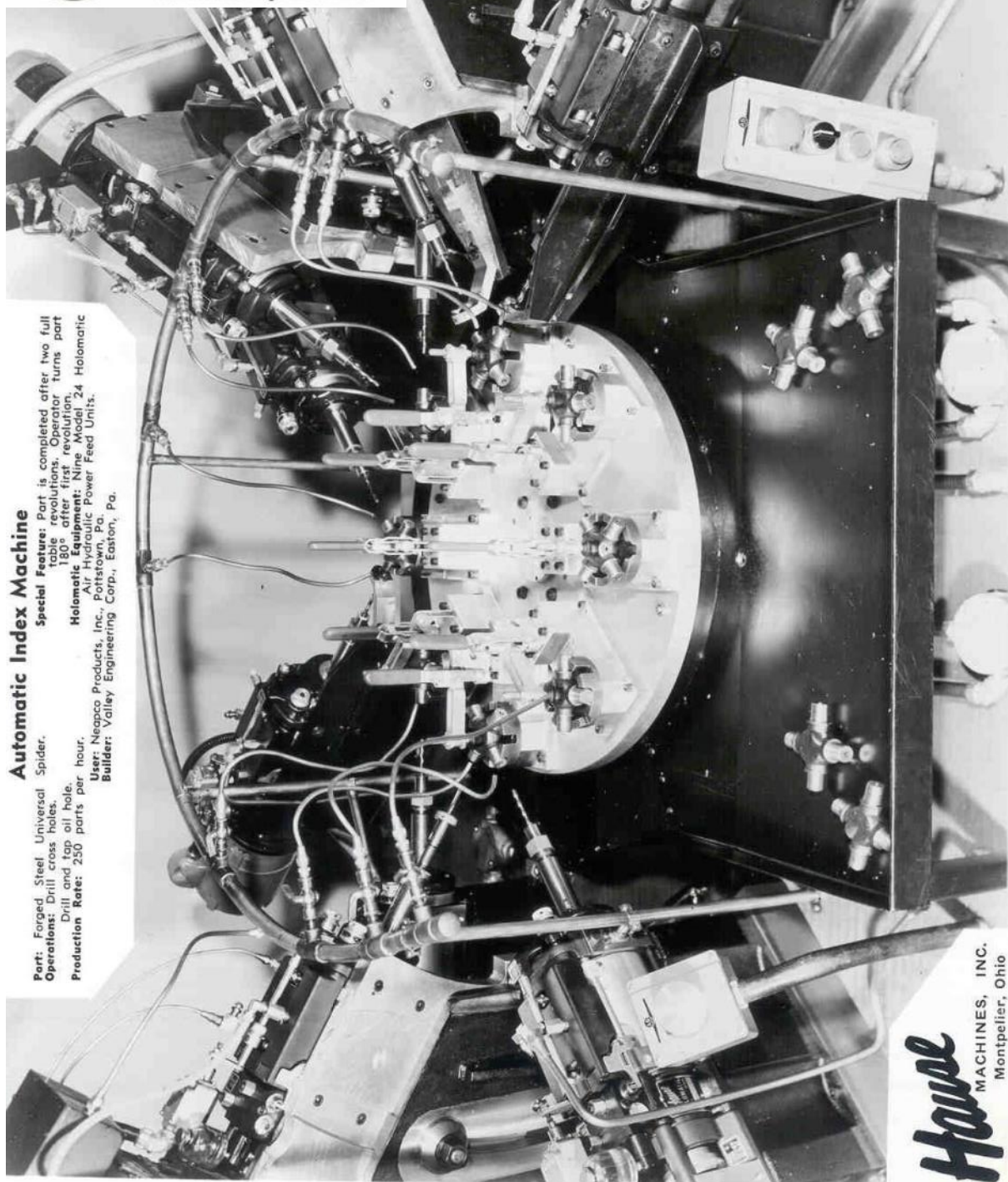










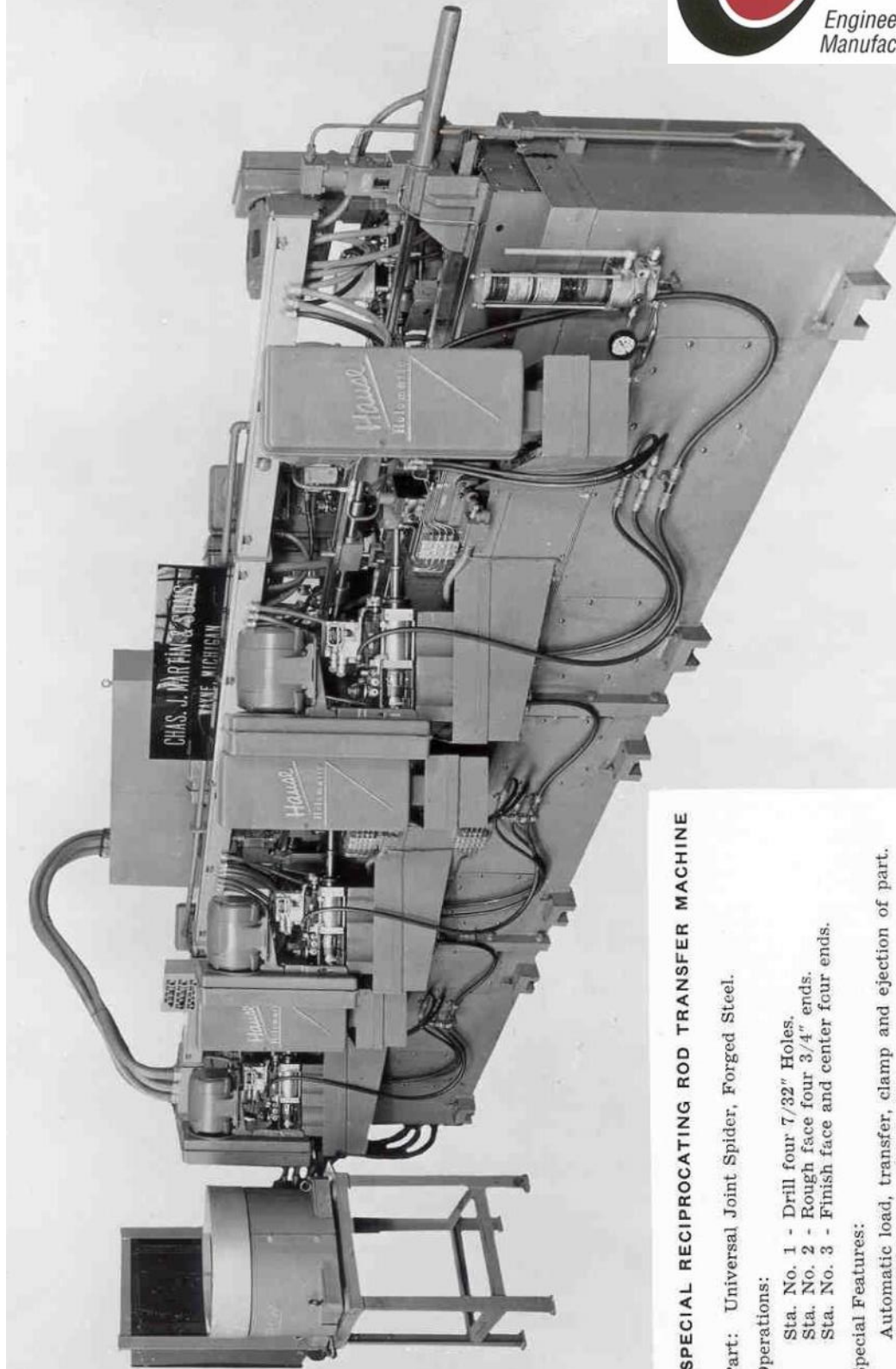


### Automatic Index Machine

**Part:** Forged Steel Universal Spider.  
**Operations:** Drill cross holes.  
 Drill and tap oil hole.  
**Production Rate:** 250 parts per hour.  
**Special Feature:** Part is completed after two full table revolutions. Operator turns part 180° after first revolution.  
**Holomatic Equipment:** Nine Model 24 Holomatic Air Hydraulic Power Feed Units.  
**User:** Neapco Products, Inc., Pittsburgh, Pa.  
**Builder:** Valley Engineering Corp., Easton, Pa.

**Hause**  
 MACHINES, INC.  
 Montpelier, Ohio





#### SPECIAL RECIPROCATING ROD TRANSFER MACHINE

Part: Universal Joint Spider, Forged Steel.

##### Operations:

- Sta. No. 1 - Drill four 7/32" Holes.
- Sta. No. 2 - Rough face four 3/4" ends.
- Sta. No. 3 - Finish face and center four ends.

##### Special Features:

- Automatic load, transfer, clamp and ejection of part.
- Automatic bearing lubrication.
- Rigid tool supports.
- 12 Holomatic units.

Production Rate: 500 pieces per hour.

Designer & Builder: Charles J. Martin & Sons  
Wayne, Michigan

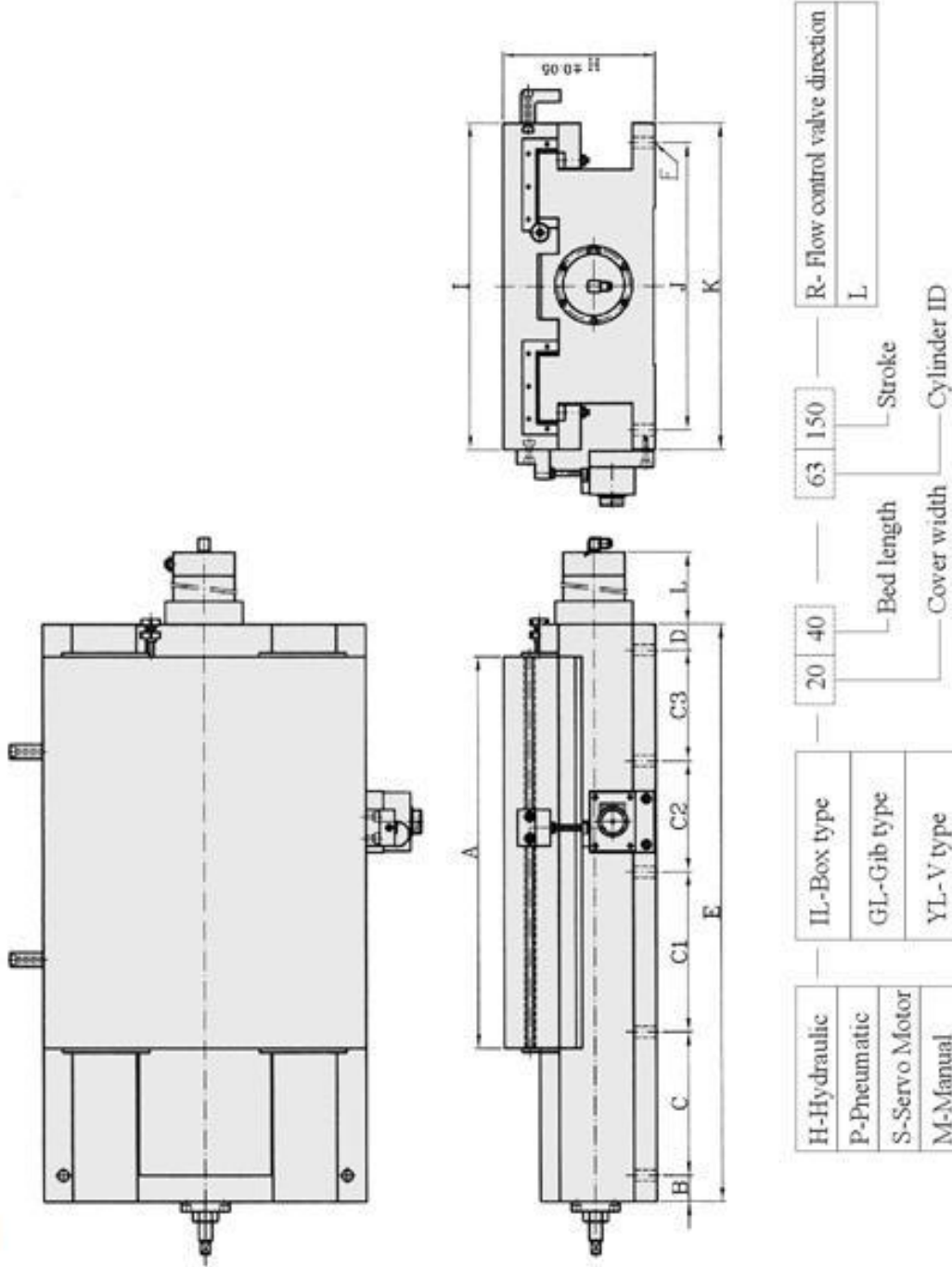


Basic or Powered Slides  
Pneumatic, Hydraulic, or Ballscrew Driven  
Good for Heavy Machining applications.  
6 Standard Widths available.

Optional  
Feed valves, switch brackets, positive stops, way covers.



## ■ Dimensions



Example: HIL-2575-50x125-R



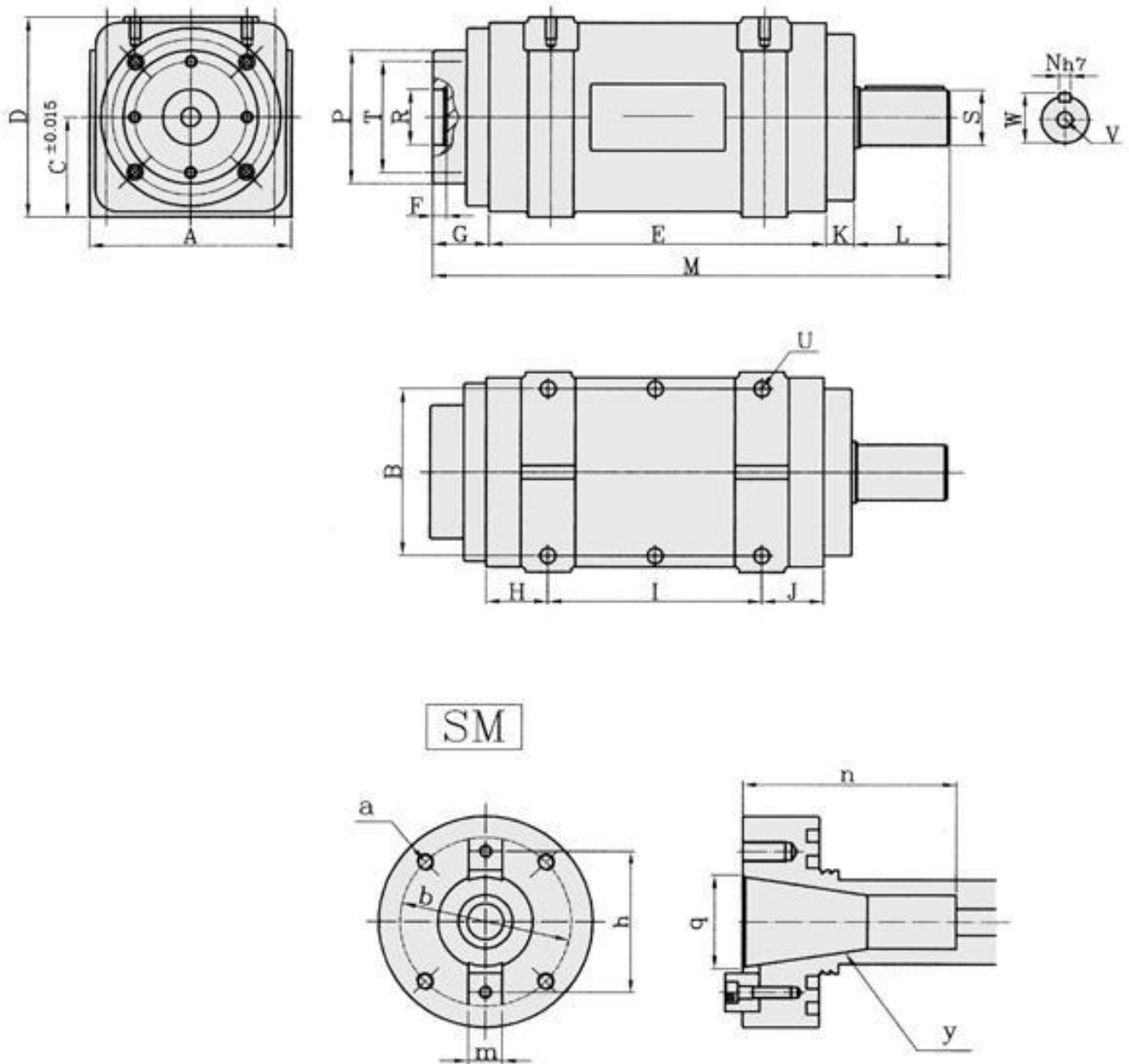
## Specification

| MODEL  | A            | B  | C   | C1  | C2  | C3      | D  | E    | F            | H   | I   | J   | K   | L   | Cylinder I.D | Rod       | Stroke       | Weight |
|--------|--------------|----|-----|-----|-----|---------|----|------|--------------|-----|-----|-----|-----|-----|--------------|-----------|--------------|--------|
| 2244   | 300          | 35 | 140 | 230 |     |         | 35 | 440  | φ 15-6 Hole  | 140 | 220 | 180 | 220 | 65  | φ 50         | φ 20      | 120          | 62kgs  |
| 2252   | 300          | 35 | 130 | 205 | 115 |         | 35 | 520  | φ 15-6 Hole  | 140 | 220 | 180 | 220 | 200 | φ 50         | φ 20      | 200          | 73kgs  |
| 2267   | 410          | 35 | 115 | 165 | 205 | 115     | 35 | 670  | φ 15-10 Hole | 140 | 220 | 180 | 220 | 65  | φ 50         | φ 20      | 220          | 90kgs  |
| 2288   | 410          | 35 | 115 | 165 | 205 | 245     | 35 | 800  | φ 15-10 Hole | 140 | 220 | 180 | 220 | 220 | φ 50         | φ 20      | 370          | 93kgs  |
| 2294   | 410          | 40 | 247 | 255 | 178 | 180     | 40 | 940  | φ 15-10 Hole | 140 | 220 | 180 | 220 | 360 | φ 50         | φ 20      | 510          |        |
| 2552   | 360          | 35 | 115 | 165 | 115 |         | 35 | 520  | φ 17-8 Hole  | 162 | 250 | 210 | 250 |     | φ 60         | φ 30      | 140          |        |
| 2567   | 420          | 35 | 115 | 165 | 205 | 115     | 35 | 670  | φ 17-10 Hole | 162 | 250 | 210 | 250 |     | φ 60         | φ 30      | 220          | 110kgs |
| 2575   | 420          | 35 | 115 | 280 | 170 | 115     | 35 | 750  | φ 17-10 Hole | 162 | 250 | 210 | 250 |     | φ 60         | φ 30      | 300          |        |
| 2594   | 420          | 40 | 247 | 255 | 178 | 180     | 40 | 940  | φ 17-10 Hole | 162 | 250 | 210 | 250 |     | φ 60         | φ 30      | 500          | 182kgs |
| 25120  | 420          | 40 | 240 | 200 | 280 | 200/200 | 40 | 1200 | φ 17-12 Hole | 162 | 250 | 210 | 250 |     | φ 60         | φ 30      | 750          |        |
| 2552H  | 360          | 35 | 115 | 165 | 115 |         | 35 | 520  | φ 17-8 Hole  | 205 | 250 | 210 | 250 |     | φ 60         | φ 30      | 140          | 94kgs  |
| 2567H  | 420          | 35 | 115 | 165 | 205 | 115     | 35 | 670  | φ 17-10 Hole | 205 | 250 | 210 | 250 |     | φ 60         | φ 30      | 220          | 129kgs |
| 2575H  | 420          | 35 | 115 | 280 | 170 | 115     | 35 | 750  | φ 17-10 Hole | 205 | 250 | 210 | 250 |     | φ 60         | φ 30      | 300          |        |
| 2594H  | 420          | 40 | 247 | 255 | 178 | 180     | 40 | 940  | φ 17-10 Hole | 205 | 250 | 210 | 250 |     | φ 60         | φ 30      | 500          |        |
| 25120H | 420          | 40 | 240 | 200 | 280 | 200/200 | 40 | 1200 | φ 17-12 Hole | 205 | 250 | 210 | 250 |     | φ 60         | φ 30      | 750          |        |
| 3042   | 360          | 35 | 130 | 230 |     |         | 25 | 420  | φ 17-6 Hole  | 162 | 300 | 260 | 300 |     | φ 60         | φ 30      | 100          | 89kgs  |
| 3056   | 360          | 35 | 135 | 220 | 135 |         | 35 | 560  | φ 17-8 Hole  | 162 | 300 | 260 | 300 |     | φ 70         | φ 35      | 170          | 115kgs |
| 3067   | 420          | 35 | 115 | 165 | 205 | 115     | 35 | 670  | φ 17-10 Hole | 162 | 300 | 260 | 300 |     | φ 70         | φ 35      | 220          |        |
| 3075   | 420          | 35 | 115 | 280 | 170 | 115     | 35 | 750  | φ 17-10 Hole | 162 | 300 | 260 | 300 |     | φ 70         | φ 35      | 300          |        |
| 3080   | 420          | 35 | 165 | 280 | 285 |         | 35 | 800  | φ 17-8 Hole  | 162 | 300 | 260 | 300 |     | φ 70         | φ 35      | 350          | 179kgs |
| 3094   | 420          | 40 | 247 | 255 | 178 | 180     | 40 | 940  | φ 17-10 Hole | 162 | 300 | 260 | 300 |     | φ 70         | φ 35      | 500          | 175kgs |
| 30120  | 420          | 40 | 240 | 200 | 280 | 200/200 | 40 | 1200 | φ 17-12 Hole | 162 | 300 | 260 | 300 |     | φ 70         | φ 35      | 750          |        |
| 3024H  | 360          | 35 | 130 | 230 |     |         | 25 | 420  | φ 17-6 Hole  | 205 | 300 | 260 | 300 |     | φ 60         | φ 30      | 100          | 95kgs  |
| 3056H  | 360          | 35 | 135 | 220 | 135 |         | 35 | 560  | φ 17-8 Hole  | 205 | 300 | 260 | 300 |     | φ 70         | φ 35      | 170          |        |
| 3067H  | 420          | 35 | 115 | 165 | 205 | 115     | 35 | 670  | φ 17-10 Hole | 205 | 300 | 260 | 300 |     | φ 70         | φ 35      | 220          |        |
| 3075H  | 420          | 35 | 115 | 280 | 170 | 115     | 35 | 750  | φ 17-10 Hole | 205 | 300 | 260 | 300 |     | φ 70         | φ 35      | 300          |        |
| 3080H  | 420          | 35 | 165 | 280 | 285 |         | 35 | 800  | φ 17-8 Hole  | 205 | 300 | 260 | 300 |     | φ 70         | φ 35      | 350          |        |
| 3094H  | 420          | 40 | 247 | 255 | 178 | 180     | 40 | 940  | φ 17-10 Hole | 205 | 300 | 260 | 300 |     | φ 70         | φ 35      | 500          |        |
| 30120H | 420          | 40 | 240 | 200 | 280 | 200/200 | 40 | 1200 | φ 17-12 Hole | 205 | 300 | 260 | 300 |     | φ 70         | φ 35      | 750          | 246kgs |
| 3656   | 360          | 35 | 135 | 220 | 135 |         | 35 | 560  | φ 17-8 Hole  | 205 | 360 | 306 | 360 |     | φ 70 φ 80    | φ 35 φ 40 | 170          |        |
| 3667   | 420          | 35 | 115 | 165 | 205 | 115     | 35 | 670  | φ 17-10 Hole | 205 | 360 | 306 | 360 |     | φ 70 φ 80    | φ 35 φ 40 | 220          |        |
| 3680   | 420<br>(520) | 35 | 165 | 280 | 285 |         | 35 | 800  | φ 17-8 Hole  | 205 | 360 | 306 | 360 |     | φ 70 φ 80    | φ 35 φ 40 | 350<br>(250) |        |
| 3694   | 525          | 40 | 247 | 255 | 178 | 180     | 40 | 940  | φ 17-10 Hole | 205 | 360 | 306 | 360 |     | φ 70 φ 80    | φ 35 φ 40 | 400          |        |
| 36120  | 600          | 40 | 240 | 200 | 280 | 200/200 | 40 | 1200 | φ 17-12 Hole | 205 | 360 | 306 | 360 |     | φ 70 φ 80    | φ 35 φ 40 | 550          |        |
| 4267   | 420          | 35 | 115 | 280 | 205 |         | 35 | 670  | φ 17-8 Hole  | 205 | 420 | 366 | 420 |     | φ 80         | φ 40      | 220          |        |
| 4294   | 525          | 40 | 247 | 255 | 178 | 180     | 40 | 940  | φ 17-10 Hole | 205 | 420 | 366 | 420 |     | φ 80         | φ 40      | 400          |        |
| 42120  | 600          | 40 | 240 | 220 | 220 | 220/220 | 40 | 1200 | φ 17-12 Hole | 205 | 420 | 366 | 420 |     | φ 80         | φ 40      | 550          |        |
| 5088   | 600          | 40 | 220 | 245 | 170 | 170     | 40 | 885  | φ 17-10 Hole | 235 | 500 | 440 | 500 |     | φ 90 φ 100   | φ 40      | 250          |        |
| 50120  | 600          | 40 | 240 | 200 | 280 | 200/200 | 40 | 1200 | φ 17-12 Hole | 235 | 500 | 440 | 500 |     | φ 90 φ 100   | φ 40      | 550          |        |
| 50220  | 950          | 80 | 340 | 340 | 340 | 340/340 | 80 | 2200 | φ 17-14 Hole | 235 | 500 | 440 | 500 |     | φ 90 φ 100   | φ 40      | 1200         |        |





## ■ Dimensions

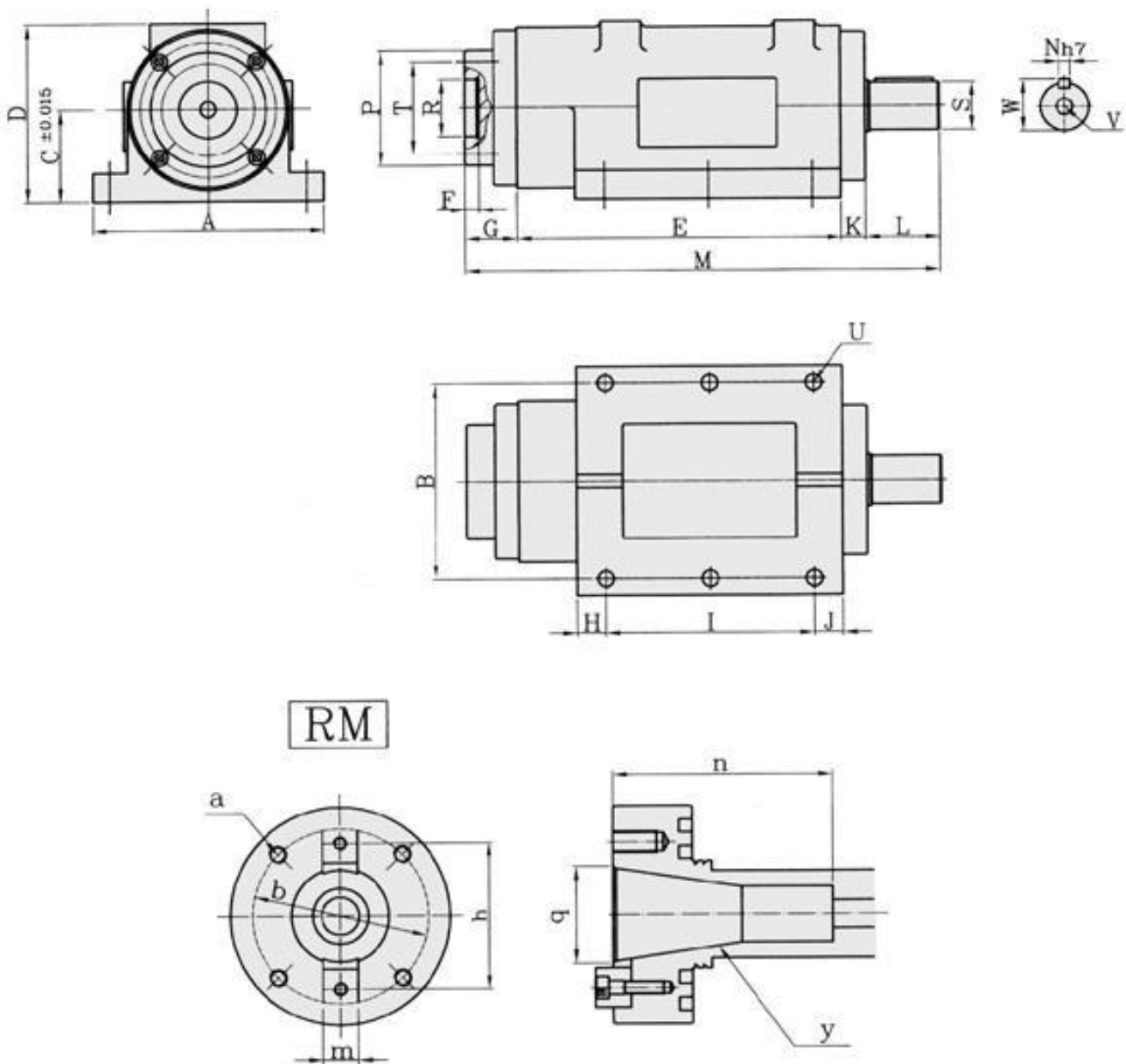




## Specification

| Model<br>Dimension | S-25             | S-30             | S-35             | S-40              | S-50              | S-60               | S-70               | S-80               |
|--------------------|------------------|------------------|------------------|-------------------|-------------------|--------------------|--------------------|--------------------|
| <b>A</b>           | 96               | 120              | 120              | 150               | 150               | 180                | 180                | 210                |
| <b>B</b>           | 75               | 95               | 95               | 120               | 120               | 150                | 150                | 175                |
| <b>C</b>           | 50               | 65               | 65               | 80                | 80                | 90                 | 90                 | 110                |
| <b>D</b>           | 98               | 125              | 125              | 155               | 155               | 180                | 180                | 215                |
| <b>E</b>           | 170              | 200              | 200              | 280               | 280               | 300                | 300                | 370                |
| <b>F</b>           | 12               | 12               | 12               | 12                | 12                | 12                 | 12                 | 12                 |
| <b>G</b>           | 40               | 40               | 40               | 45                | 45                | 50                 | 50                 | 50                 |
| <b>H</b>           | 20               | 35               | 35               | 45                | 45                | 55                 | 55                 | 55                 |
| <b>I</b>           | 130              | 130              | 130              | 190               | 190               | 190                | 190                | 260                |
| <b>J</b>           | 20               | 35               | 35               | 45                | 45                | 55                 | 55                 | 55                 |
| <b>K</b>           | 20               | 20               | 20               | 25                | 25                | 30                 | 30                 | 30                 |
| <b>L</b>           | 50               | 50               | 50               | 60                | 60                | 80                 | 80                 | 90                 |
| <b>M</b>           | 280              | 310              | 310              | 410               | 410               | 460                | 460                | 540                |
| <b>N</b>           | 5h7              | 6h7              | 6h7              | 8h7               | 10h7              | 12h7               | 15h7               | 15h7               |
| <b>P</b>           | φ 60             | φ 80             | φ 80             | φ 100             | φ 100             | φ 120              | φ 120              | φ 140              |
| <b>R</b>           | φ 30H7           | φ 30H7           | φ 30H7           | φ 50H7            | φ 50H7            | φ 50H7             | φ 50H7             | φ 50H7             |
| <b>S</b>           | φ 18h7           | φ 26h7           | φ 26h7           | φ 30h7            | φ 42h7            | φ 50h7             | φ 60h7             | φ 65h7             |
| <b>T</b>           | φ 45x4<br>M8x15ℓ | φ 65x4<br>M8x15ℓ | φ 65x4<br>M8x15ℓ | φ 80x4<br>M10x15ℓ | φ 80x4<br>M10x15ℓ | φ 100x4<br>M10x20ℓ | φ 100x4<br>M10x20ℓ | φ 120x4<br>M10x20ℓ |
| <b>U</b>           | M8x1.25          | M8x1.25          | M8x1.25          | M10x1.5           | M10x1.5           | M10x1.5            | M10x1.5            | M10x1.5            |
| <b>V</b>           | 4- φ 11          | 4- φ 11          | 4- φ 11          | 4- φ 14           | 4- φ 14           | 4- φ 16            | 4- φ 16            | 4- φ 18            |
| <b>W</b>           | 20               | 28.5             | 28.5             | 33                | 45                | 53                 | 65                 | 70                 |
| <b>a</b>           |                  | 4-M8x15ℓ         | 4-M8x15ℓ         | M10x15ℓ           | M10x15ℓ           | M10x20ℓ            | M10x20ℓ            | M10x20ℓ            |
| <b>b</b>           |                  | φ 65             | φ 65             | φ 80              | φ 80              | φ 100              | φ 100              | φ 120              |
| <b>h</b>           |                  | 50.8             | 50.8             | 66.7              | 66.7              | 66.7               | 95                 | 101.6              |
| <b>m</b>           |                  | 15.9h7           | 15.9h7           | 15.9h7            | 15.9h7            | 15.9h7             | 25.4h7             | 25.4h7             |
| <b>n</b>           |                  | 73               | 73               | 100               | 100               | 100                | 150                | 150                |
| <b>q</b>           |                  | φ 31.75          | φ 31.75          | φ 44.45           | φ 44.45           | φ 44.45            | φ 69.85            | φ 69.85            |
| <b>y</b>           |                  | NT30             | NT30             | NT40              | NT40              | NT40               | NT50               | NT50               |

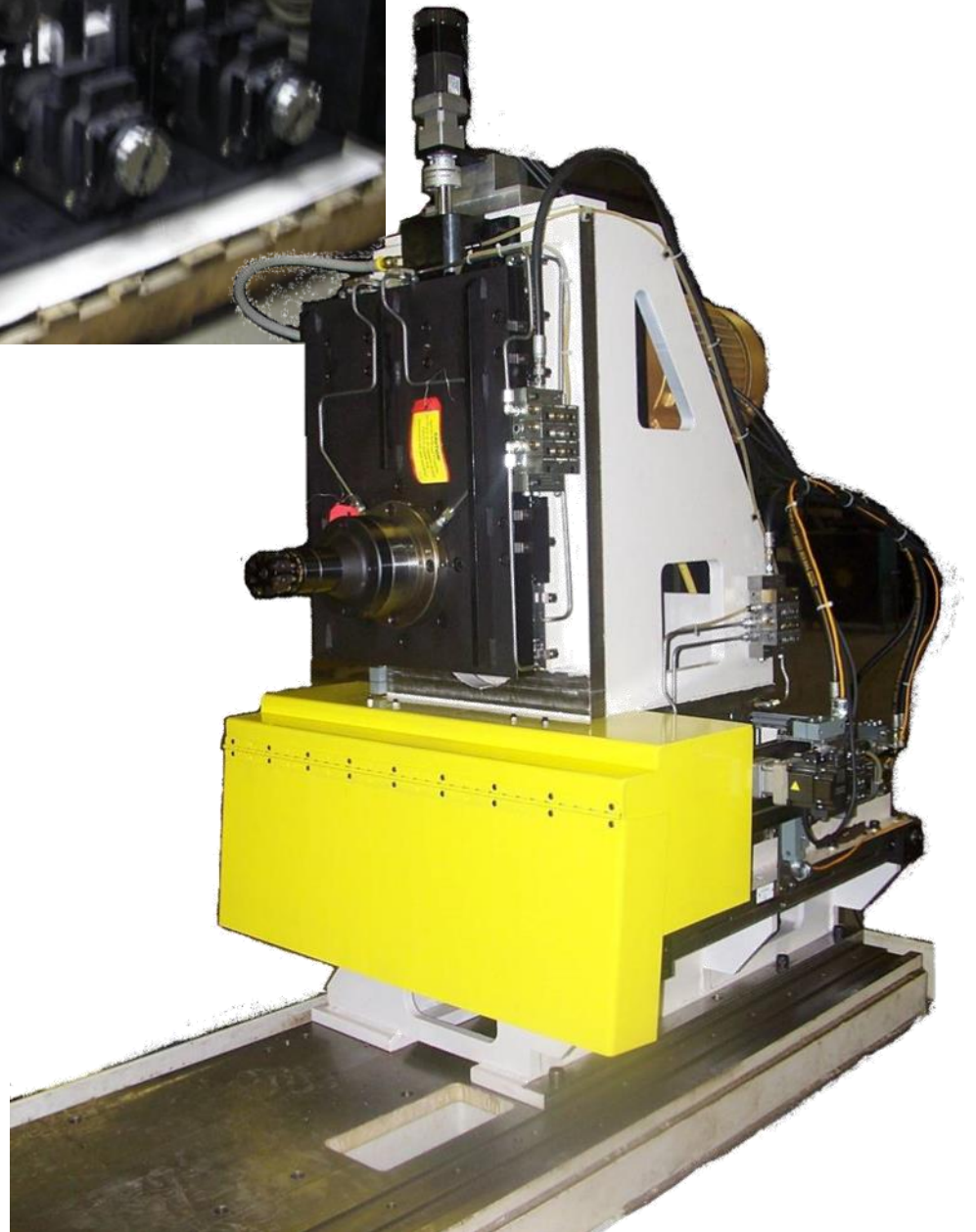
## ■ Dimensions



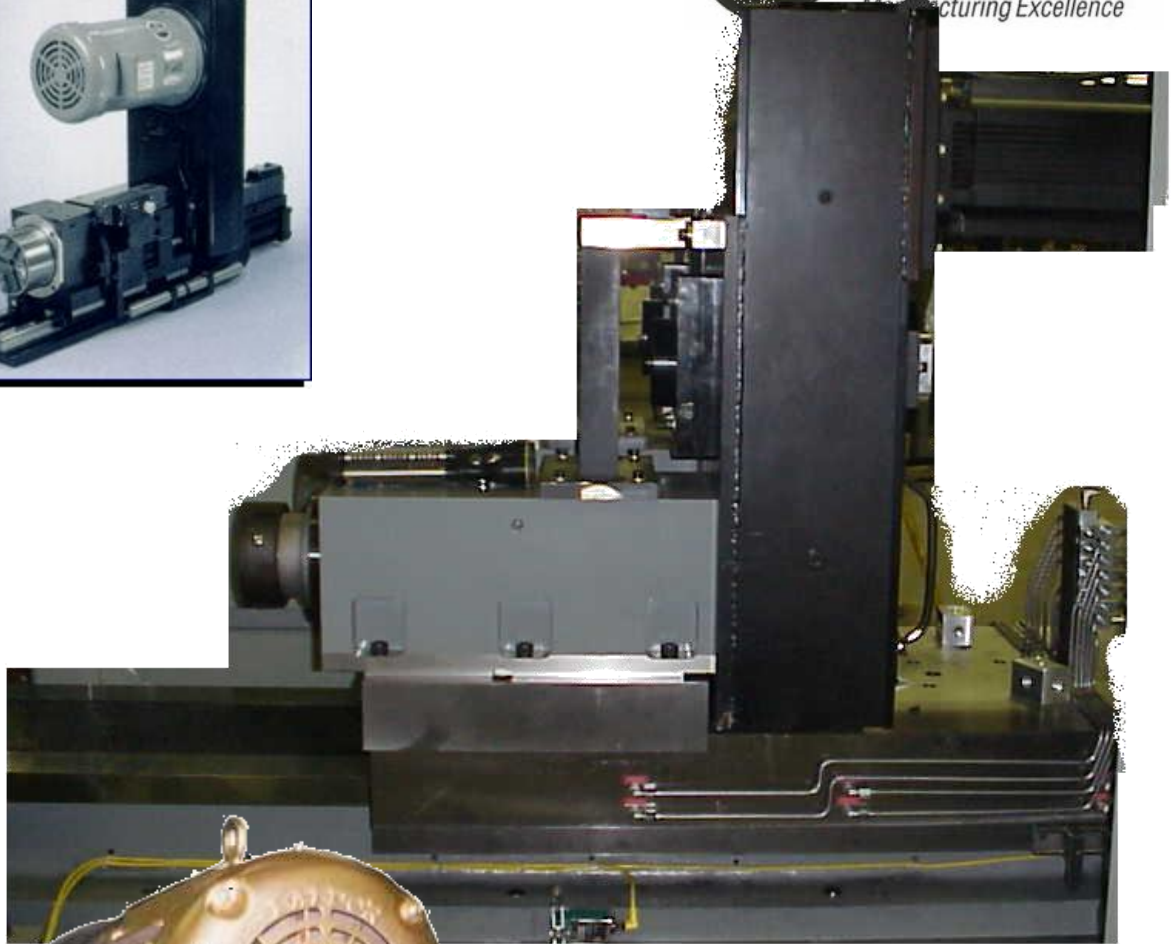
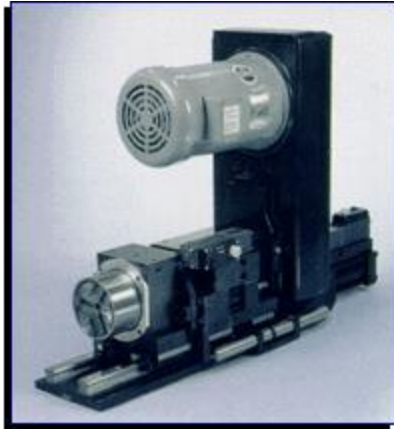


## Specification

| Model<br>Dimension | R-30             | R-35             | R-40              | R-50              | R-60               | R-70               | R-80               | R-100              | R-120              |
|--------------------|------------------|------------------|-------------------|-------------------|--------------------|--------------------|--------------------|--------------------|--------------------|
| <b>A</b>           | 160              | 160              | 150               | 200               | 240                | 240                | 280                | 340                | 390                |
| <b>B</b>           | 135              | 135              | 120               | 170               | 205                | 205                | 240                | 290                | 340                |
| <b>C</b>           | 65               | 65               | 80                | 80                | 90                 | 90                 | 110                | 130                | 160                |
| <b>D</b>           | 125              | 125              | 155               | 155               | 180                | 180                | 215                | 260                | 315                |
| <b>E</b>           | 160              | 160              | 280               | 230               | 250                | 250                | 300                | 320                | 370                |
| <b>F</b>           | 12               | 12               | 12                | 12                | 12                 | 12                 | 12                 | 25                 | 25                 |
| <b>G</b>           | 40               | 40               | 45                | 45                | 50                 | 50                 | 50                 | 60                 | 60                 |
| <b>H</b>           | 20               | 20               | 25                | 25                | 35                 | 35                 | 30                 | 40                 | 45                 |
| <b>I</b>           | 120              | 120              | 180               | 180               | 180                | 180                | 240                | 240                | 280                |
| <b>J</b>           | 20               | 20               | 45                | 25                | 35                 | 35                 | 30                 | 40                 | 45                 |
| <b>K</b>           | 20               | 20               | 25                | 25                | 30                 | 30                 | 30                 | 40                 | 40                 |
| <b>L</b>           | 50               | 50               | 60                | 60                | 80                 | 80                 | 90                 | 100                | 120                |
| <b>M</b>           | 310              | 310              | 410               | 410               | 460                | 460                | 540                | 600                | 670                |
| <b>N</b>           | 6h7              | 6h7              | 8h7               | 10h7              | 12h7               | 15h7               | 15h7               | 18h7               | 20h7               |
| <b>P</b>           | φ 80             | φ 80             | φ 100             | φ 100             | φ 120              | φ 120              | φ 140              | φ 200              | φ 220              |
| <b>R</b>           | φ 30H7           | φ 30H7           | φ 50H7            | φ 50H7            | φ 50H7             | φ 50H7             | φ 50H7             | φ 50H7             | φ 50H7             |
| <b>S</b>           | φ 26h7           | φ 26h7           | φ 30h7            | φ 42h7            | φ 50h7             | φ 60h7             | φ 65h7             | φ 75h7             | φ 90h7             |
| <b>T</b>           | φ 65x4<br>M8x15ℓ | φ 65x4<br>M8x15ℓ | φ 80x4<br>M10x15ℓ | φ 80x4<br>M10x20ℓ | φ 100x4<br>M10x20ℓ | φ 100x4<br>M10x20ℓ | φ 120x6<br>M10x20ℓ | φ 170x6<br>M12x25ℓ | φ 180x8<br>M14x25ℓ |
| <b>U</b>           | 4-φ 11           | 4-φ 11           | 6-φ 14            | 6-φ 14            | 6-φ 16             | 6-φ 16             | 6-φ 18             | 6-φ 18             | 6-φ 18             |
| <b>V</b>           | φ 14             | φ 14             | φ 17              | φ 17              | φ 17               | φ 27               | φ 27               | φ 27               | φ 27               |
| <b>W</b>           | 28.5             | 28.5             | 33                | 45                | 53                 | 65                 | 70                 | 81                 | 96                 |
| <b>a</b>           | 4-M8x15ℓ         | 4-M8x15ℓ         | 4-M10x15ℓ         | 4-M10x15ℓ         | 4-M10x20ℓ          | 4-M10x20ℓ          | 6-M10x20ℓ          | 6-M10x20ℓ          |                    |
| <b>b</b>           | φ 65             | φ 65             | φ 80              | φ 80              | φ 100              | φ 100              | φ 120              | φ 170              |                    |
| <b>h</b>           | 50.8             | 50.8             | 66.7              | 66.7              | 66.7               | 95                 | 101.6              | 101.6              |                    |
| <b>m</b>           | 15.9h7           | 15.9h7           | 15.9h7            | 15.9h7            | 15.9h7             | 25.4h7             | 25.4h7             | 25.4h7             |                    |
| <b>n</b>           | 73               | 73               | 100               | 100               | 100                | 150                | 150                | 150                |                    |
| <b>q</b>           | φ 31.75          | φ 31.75          | φ 44.45           | φ 44.45           | φ 44.45            | φ 69.85            | φ 69.85            | φ 69.85            |                    |
| <b>y</b>           | NT30             | NT30             | NT40              | NT40              | NT40               | NT50               | NT50               | NT50               |                    |

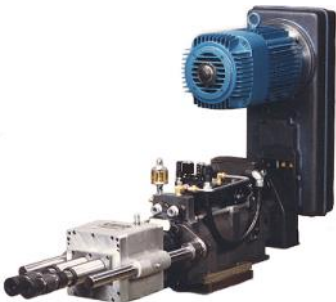
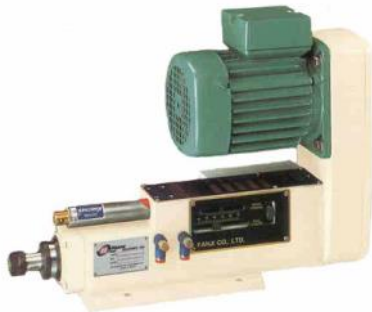








# UNITS, COMPONENTS & ASSOCIATED EQUIPMENT



**Hause Machines**  
809 S. Pleasant St.  
P.O. Box 229  
Montpelier, OH 43543

|           |  |
|-----------|--|
| Phone     | 419-485-3158   |
| Toll Free | 800-932-8665   |
| Fax       | 419-485-3146   |
| E-mail    | <a href="mailto:hause@bright.net">hause@bright.net</a>           |
| Web page  | <a href="http://www.hausemachines.com">www.hausemachines.com</a> |

## MANY MORE MODELS AND CONFIGURATIONS AVAILABLE



### AIR-HYDRAULIC 6" 2647



- Fully adjustable 6" stroke
- 1-1/16" AA Spindle
- In line shaft drive
- 2 HP 1800 rpm motor
- 5 step pulleys (830-1330-1750-2270-3650 rpm's)
- Depth switch
- Full retract interlock switch
- Extended belt housing (with belt)

### HYDRAULIC 6" 6615



- Fully adjustable 6" stroke
- 1-3/8" AA Spindle
- In line shaft drive
- 3 HP 1200 rpm motor
- 5 step pulleys (580-830-1160-1620-2320 rpm's)
- Depth switch
- Full retract interlock switch
- Overhead belt housing (with belt)

### AIR-HYDRAULIC



- Fully adjustable 4" stroke
- 1-1/16" AA spindle
- In line shaft drive
- 2 HP 1800 rpm motor
- 5 step pulleys (830-1330-1750-2270-3650 rpm's)
- Depth switch
- Full retract interlock switch
- Extended belt housing (with belt)

### HYDRAULIC 4" 6415

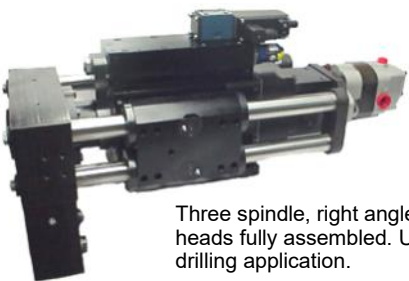
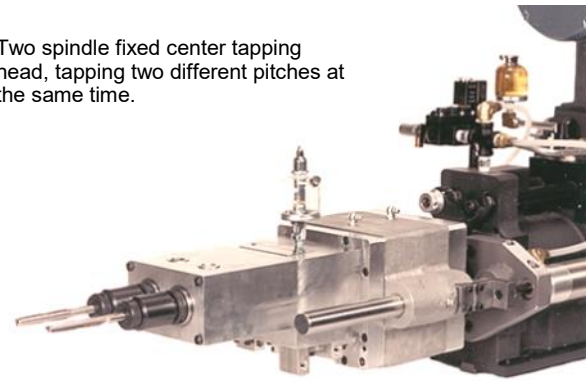


- Fully adjustable 4" stroke
- 1-3/8" AA spindle
- In line shaft drive
- 3 HP 1200 rpm motor
- 5 step pulleys (580-830-1160-1620-2320 rpm's)
- Depth switch
- Full retract interlock switch
- Overhead belt housing (with belt)

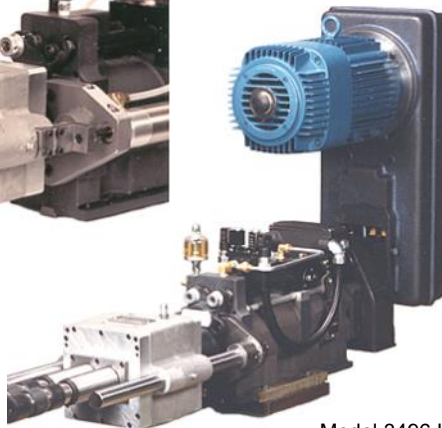
ALSO AVAILABLE IN 10" STROKE MODELS



Two spindle fixed center tapping head, tapping two different pitches at the same time.



Three spindle, right angle, multiple spindle heads fully assembled. Used for a "back feed" drilling application.



Model 3496 Lead Screw unit with a two spindle head for tapping 3/8-16 in steel.



Steel housing and internal parts for a three spindle right angle multiple spindle head.



Model 2497 with four spindle, fixed center head, traveling bushing carrier and booster cylinders for additional advance and retract thrust.



Four spindle, two position indexable head with shot pin locator and bolt secured.



Model F7N-80 Tapping unit with out belthousing and motor.



Model 2293 "J" Unit for drilling.



Model FD15-150 Ballscrew unit for Trunnion machines.

**CUSTOM DESIGNED FOR  
YOUR MACHINING NEEDS!**



## BallScrew Drilling Units

**MANUFACTURERS OF BALL SCREW FEED MACHINING UNITS FROM 1/2 HP TO 25 HP APPLICATIONS. STROKE LENGTHS FROM 3" TO 7". ALL ARE FULLY PROGRAMMABLE FROM SINGLE TO TWO AXIS CONTROL PER UNIT.**



- Drilling units
- Drilling machines
- Tapping units
- Tapping machines
- Multiple spindle heads (fixed and adjustable)
- Indexers
- Special machines

## Holomatic Drilling Units

**MANUFACTURERS OF BALL SCREW FEED, PNEUMATIC, AIR-HYDRAULIC, HYDRAULIC, AND LEAD SCREW UNITS FOR DRILLING, TAPPING, REAMING, THREADING FACING AND CHAMFERING ENDWORKING APPLICATIONS.**



## INDEXING MACHINERY

*From concept through design and build, Hause Machines can provide indexing machines from two stations on up... horizontal or vertical (Trunnion Style). We can provide indexing equipment built to machine your parts and to your specifications. Allow us to assist you with your indexing equipment needs.*

