



Drilling Unit FD8-150

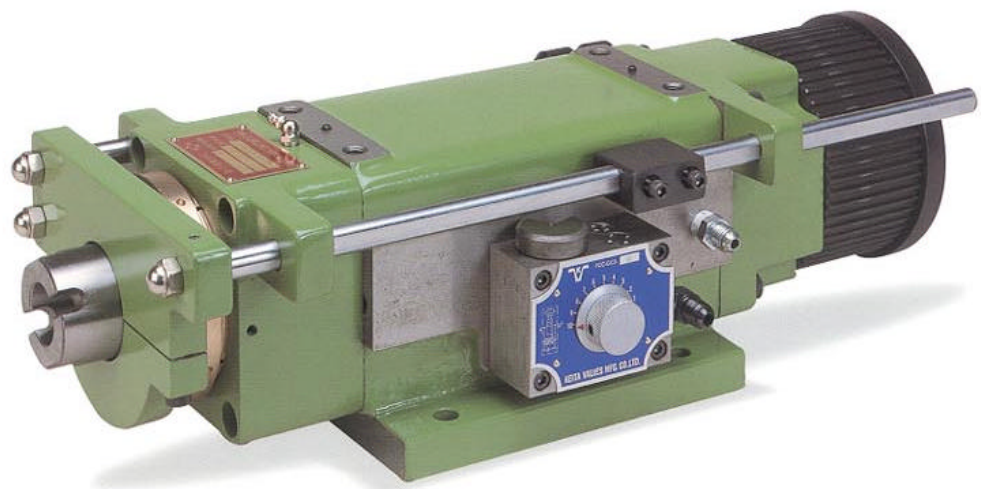


■ Specification

Hydraulic Pressure	280 ~ 490 P.S.I.
Drilling Capacity	1 $\frac{3}{8}$ " (steel)
Stroke	5.5"
Max. Revolution/Minute	1,500rpm
Flow Control Valve	FCC-G03-8
Weight	148 lb
Cylinder Diameter	4.33"
Cylinder Area	Forward 11.0 IN ² , Backward 4.87 IN ²
Thrust Force	3124 lb @ 280 P.S.I

■ Consumption Parts

O-Ring for Front Cover	P-90x2, G-115x1, DH-90x1
O-Ring for Piston	P-100x2, G-65x1
O-Ring for Rear Cover	P-55x2, G-105x1
Spindle Bearings	33010x1, 32008x1, 6010Zx1, 6008Zx1
Pulley Bearings	6013Zx1, 51213x1



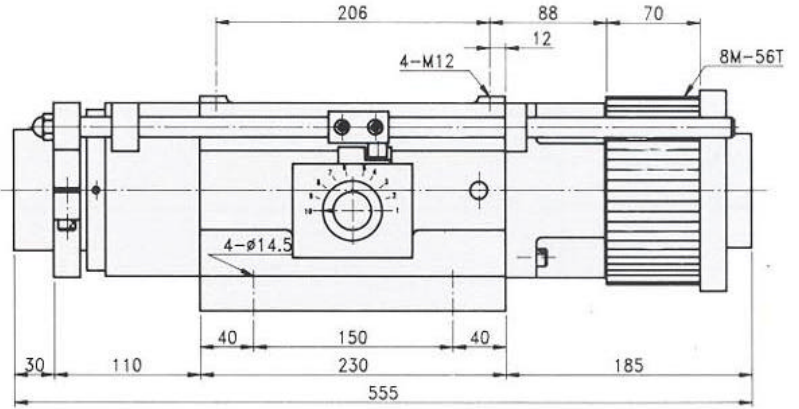
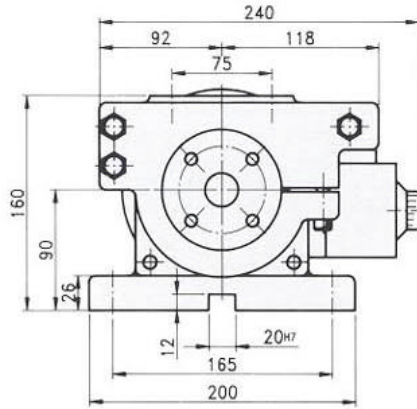
Hause Machines, Inc.
809 S. Pleasant St.
P.O. Box 229
Montpelier, OH 43543

Phone 419-485-3158
Toll Free 800-932-8665
Fax 419-485-3146
E-mail hause@bright.net
Web Page www.hausemachines.com

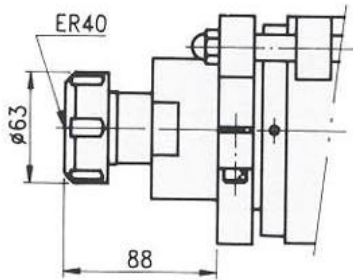
- High rpm application is available, specify this requirement when placing order.
- Left side mounted fitting holes and flow control valve are available, specify this requirement when placing order.
- The stopper is a safety device. It will shorten bearing life if applying pressure on stopper for a long time.
- If mounting multiple spindle head to this unit, nose type: FD-8M-150MT4B is recommended.



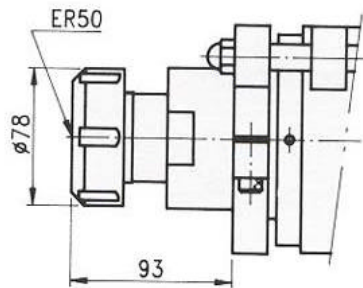
Drilling Unit FD8-150



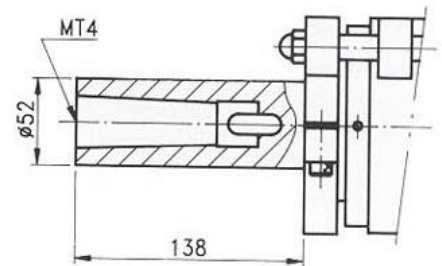
FD8-150-ER40



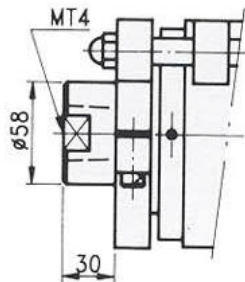
FD8-150-ER50



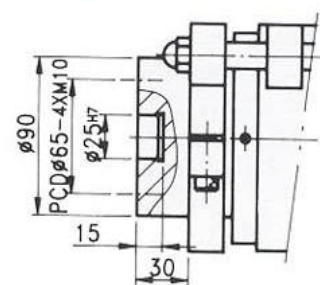
FD8-150-MT4A



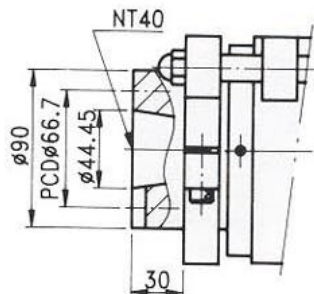
FD8-150-MT4B



FD8-150-FB30



FD8-150-NT40



FD8M-150-MT4B Multi

